

Figure 5.0: Washington Works Plant Location Map.

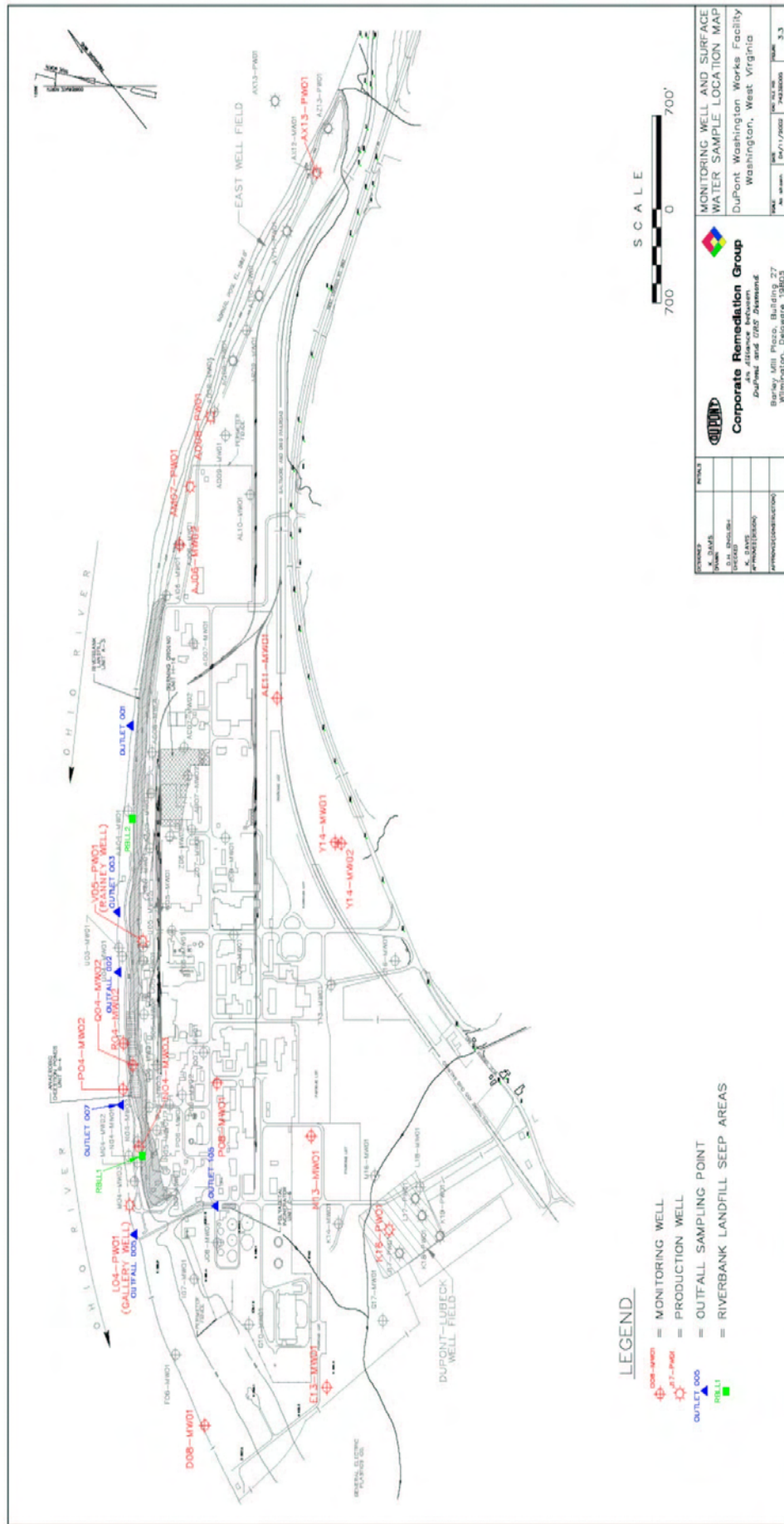
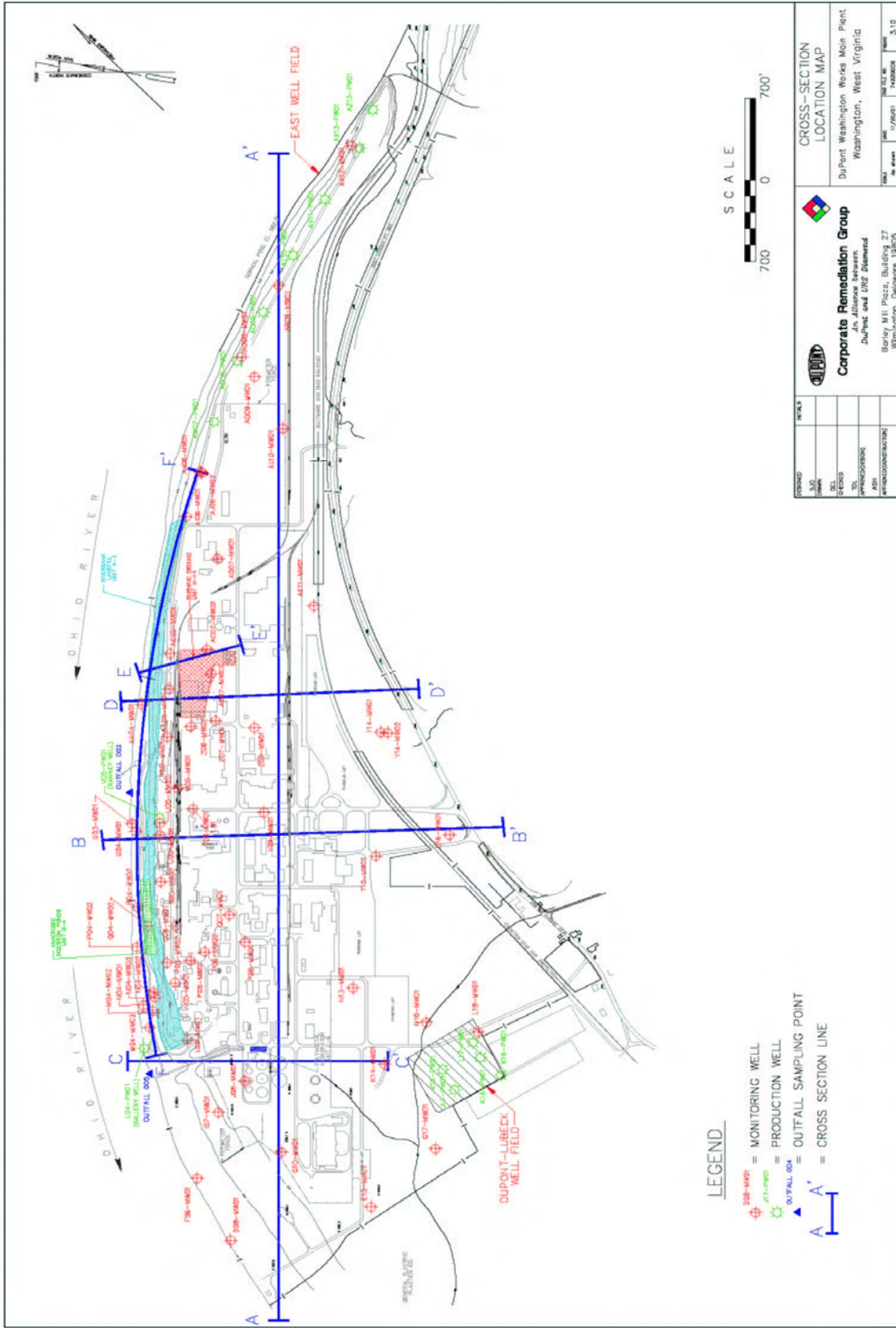


Figure 5.1: Washington Works Facility Sampling Points.



NO. OF MONITORING WELLS	NO. OF PRODUCTION WELLS	NO. OF OUTFALL SAMPLING POINTS	NO. OF CROSS-SECTION LINES

CROSS-SECTION LOCATION MAP

Corporate Remediation Group
 An Alliance between
 DuPont and DNR Element

Boyer Mill Plaza, Building 27
 Wilmington, Delaware 19825

DATE: 11/09/01
 DRAWN BY: HARRISON
 SCALE: 3:10

Figure 5.2: Washington Works Facility Geological Cross-Section Lines.

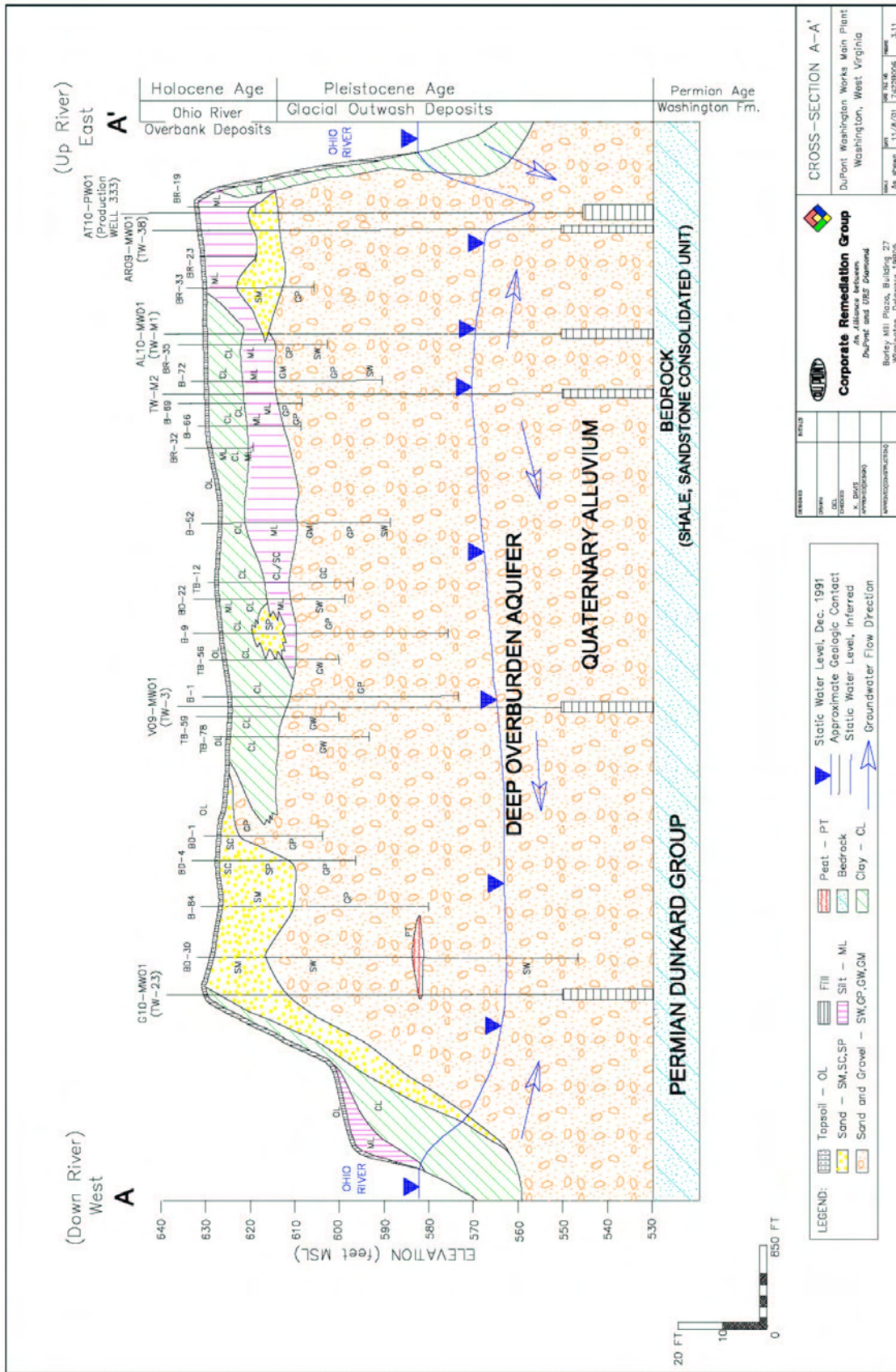


Figure 5.3: Washington Works Facility Geological Cross-Section A-A'.

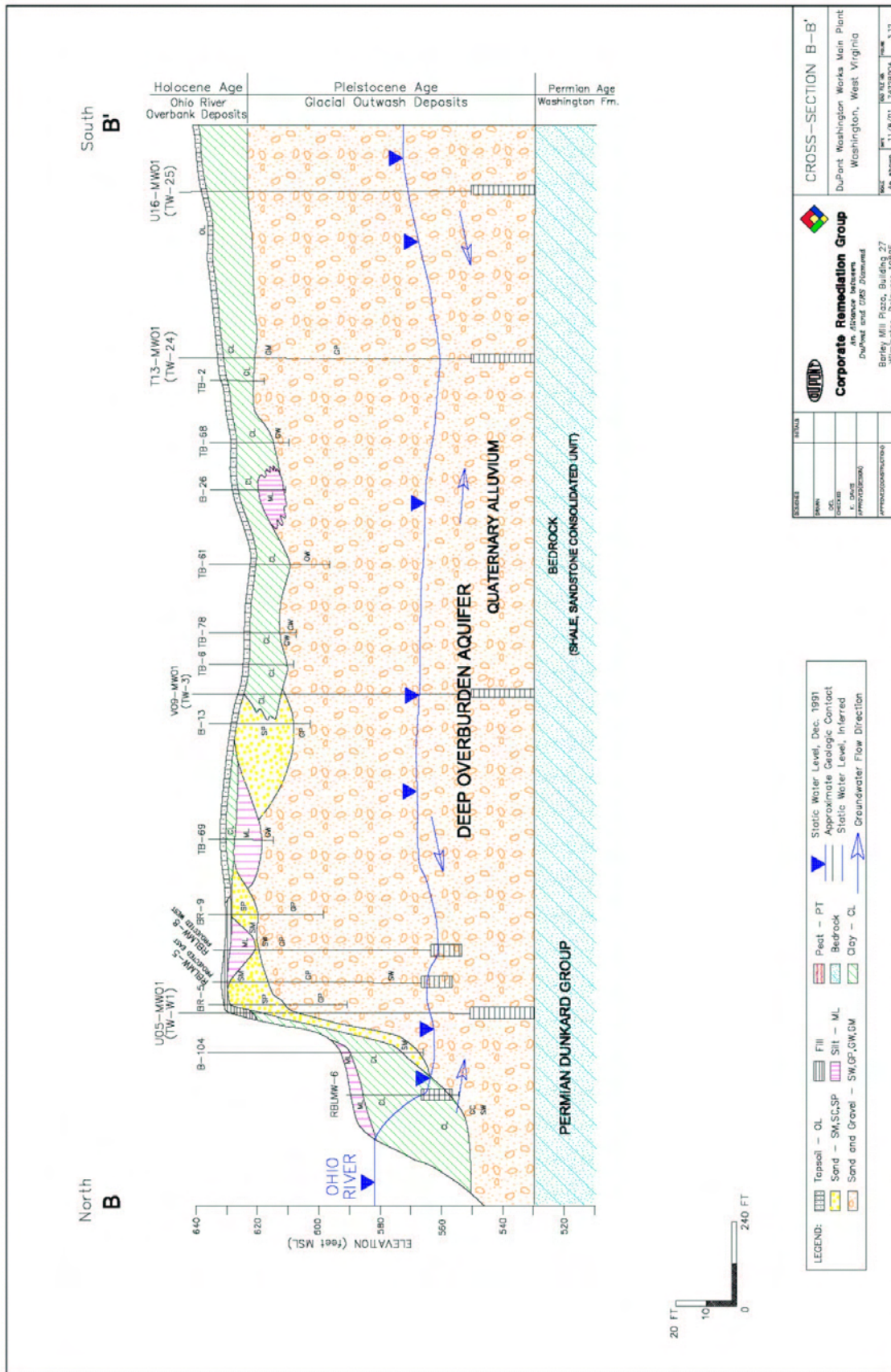


Figure 5.4: Washington Works Facility Geological Cross-Section B-B'.

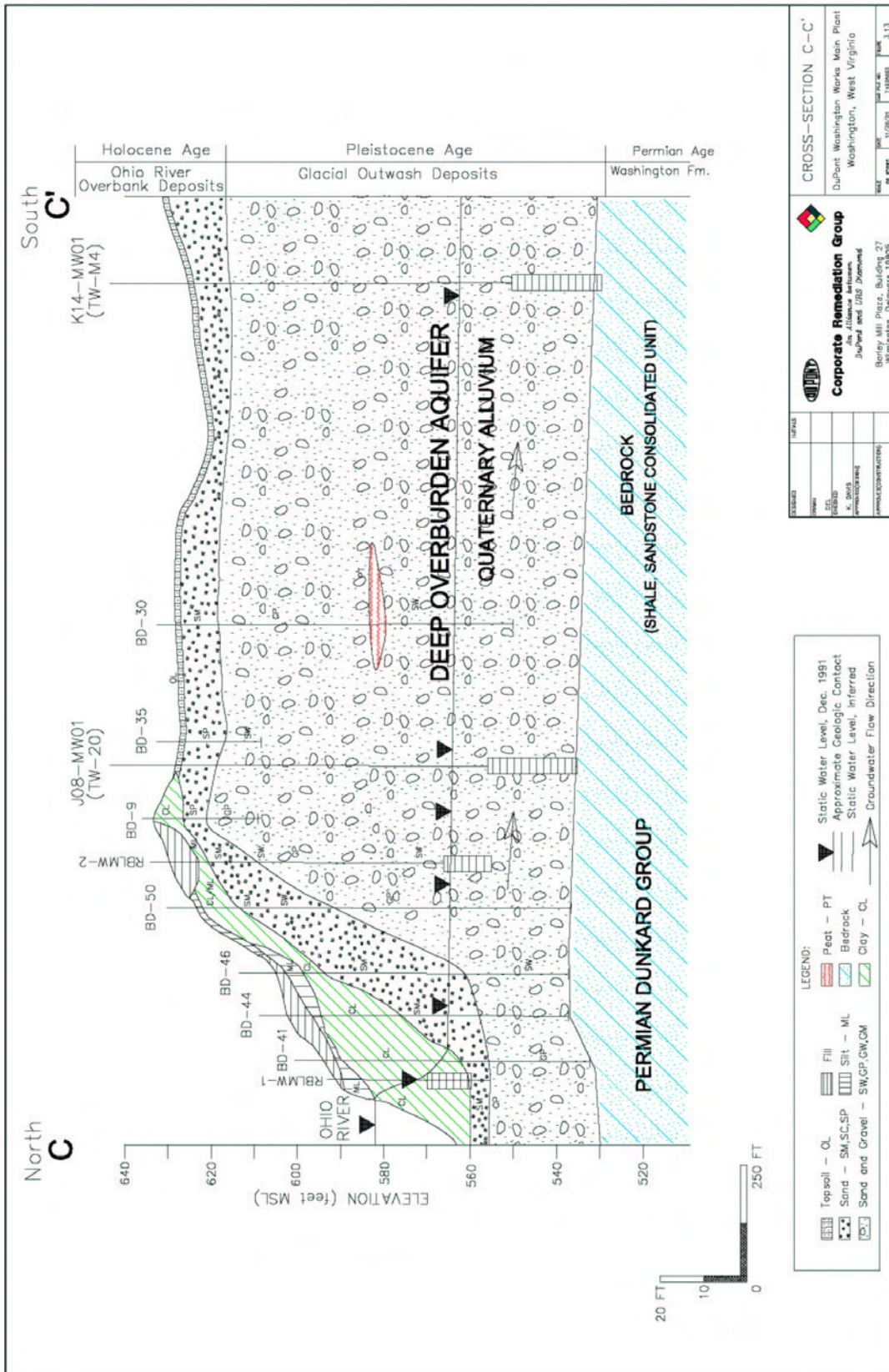


Figure 5.5: Washington Works Facility Geological Cross-Section C-C'.

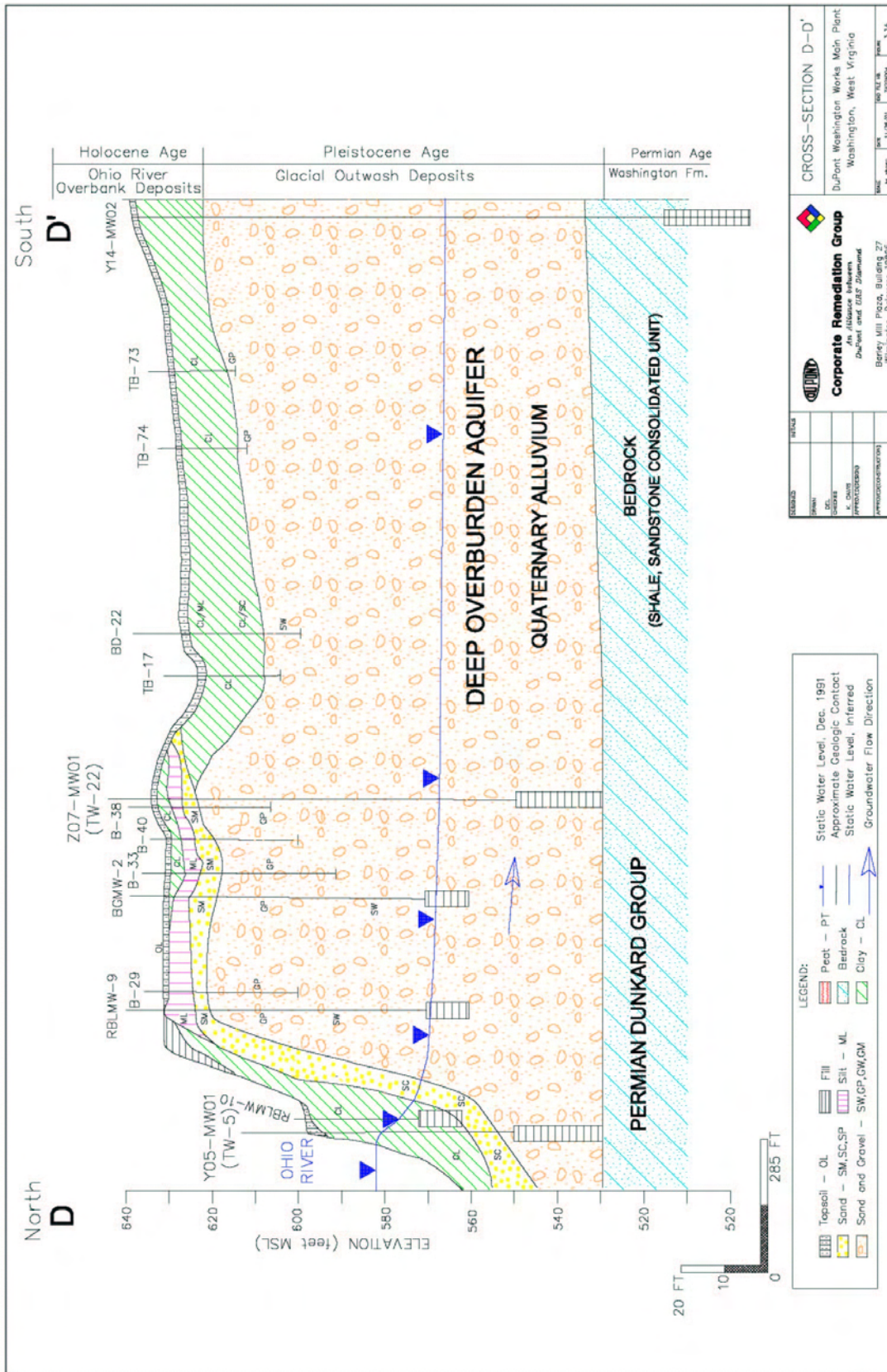


Figure 5.6: Washington Works Facility Geological Cross-Section D-D'.

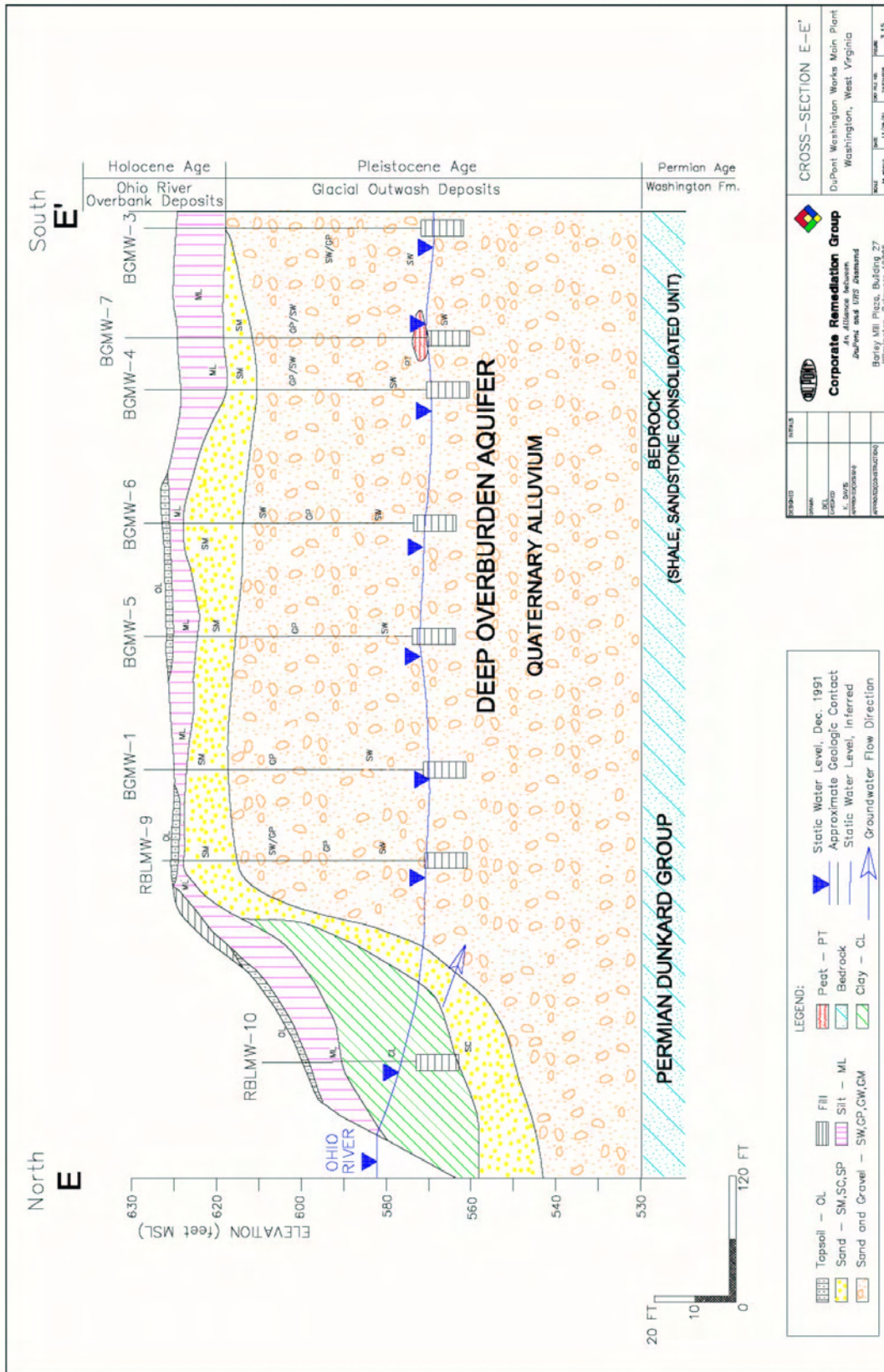


Figure 5.7: Washington Works Facility Geological Cross-Section E-E'.

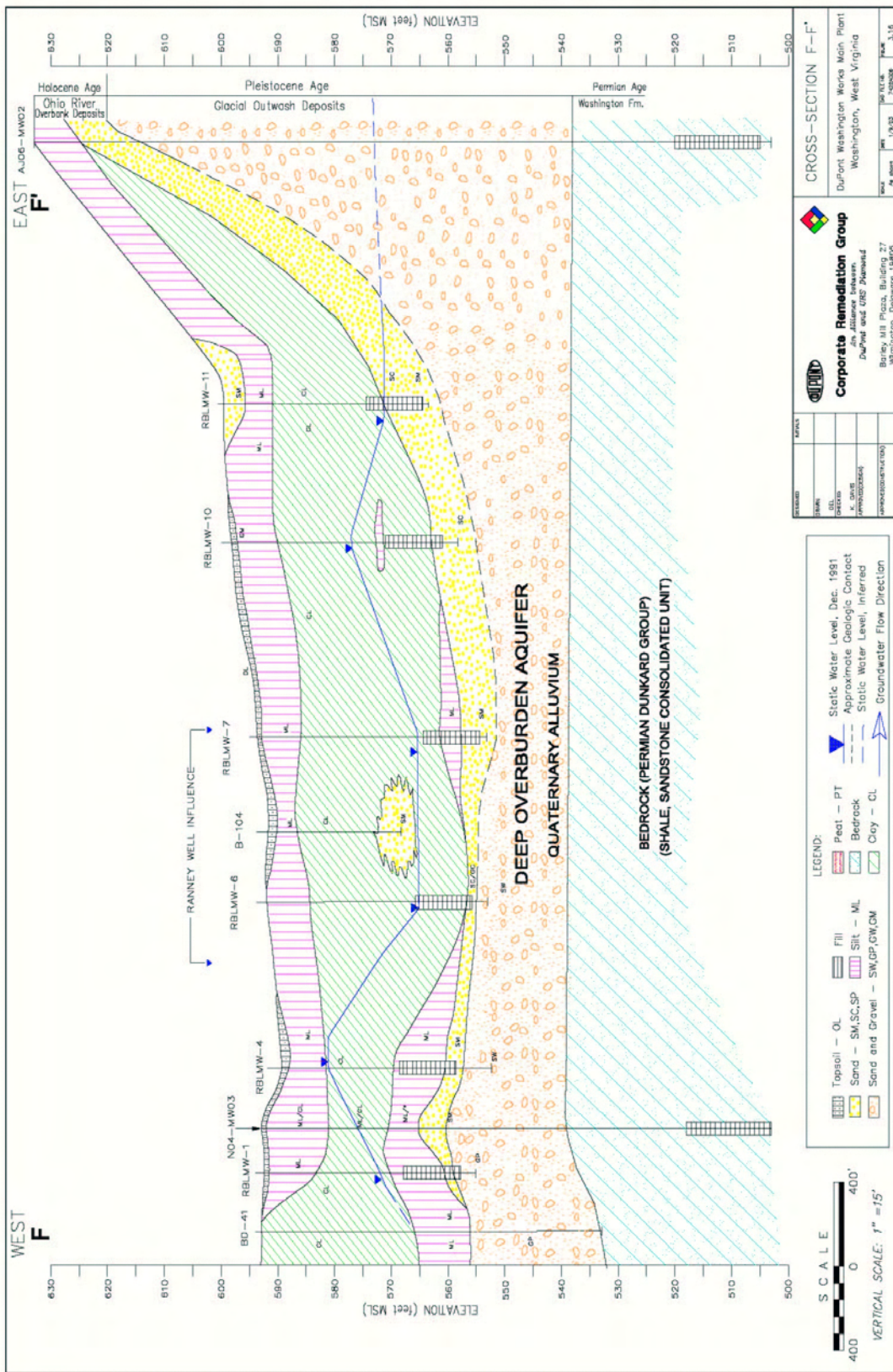


Figure 5.8: Washington Works Facility Geological Cross-Section F-F'.

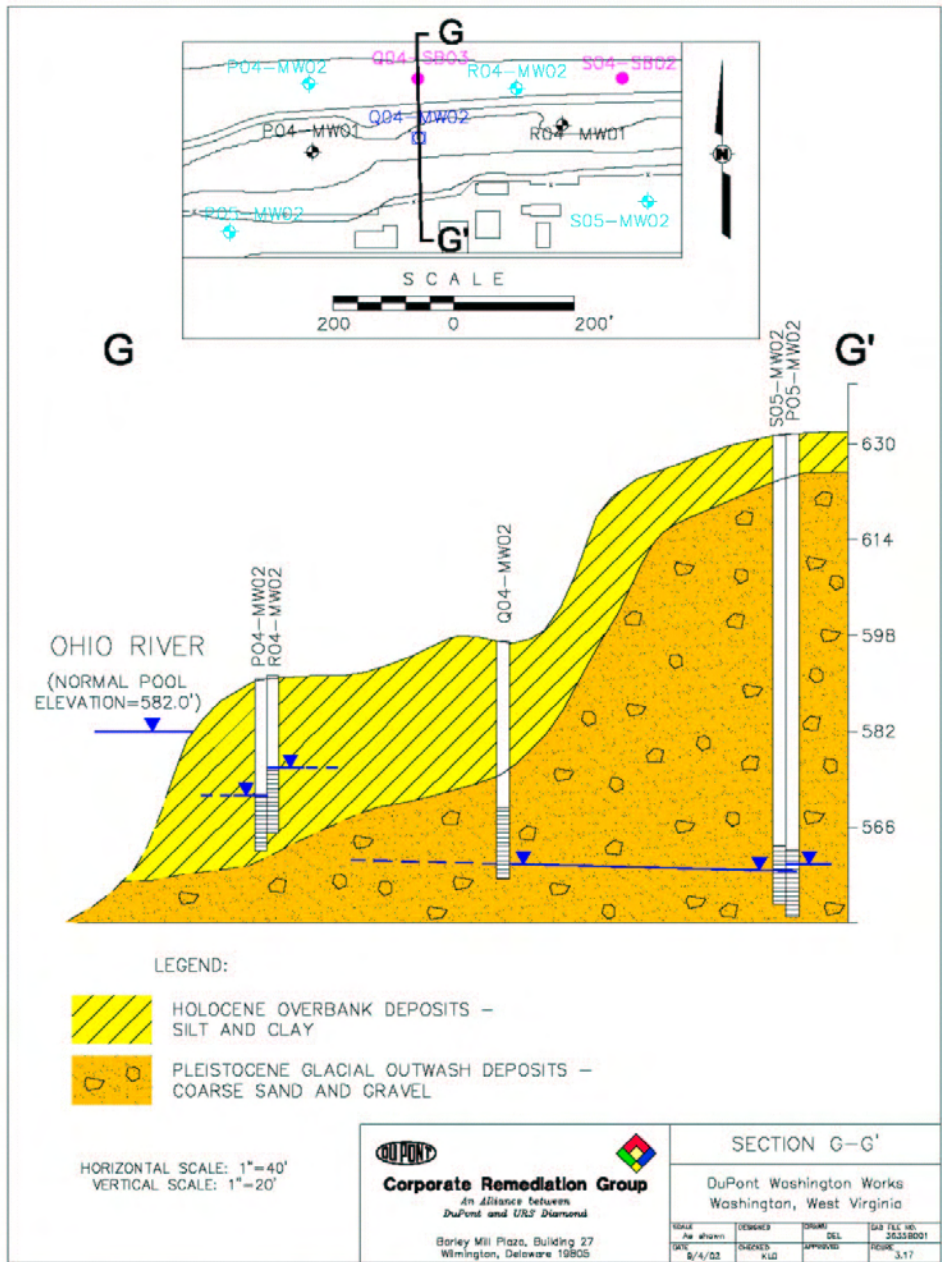


Figure 5.9: Washington Works Facility Geological Cross-Section G-G'.

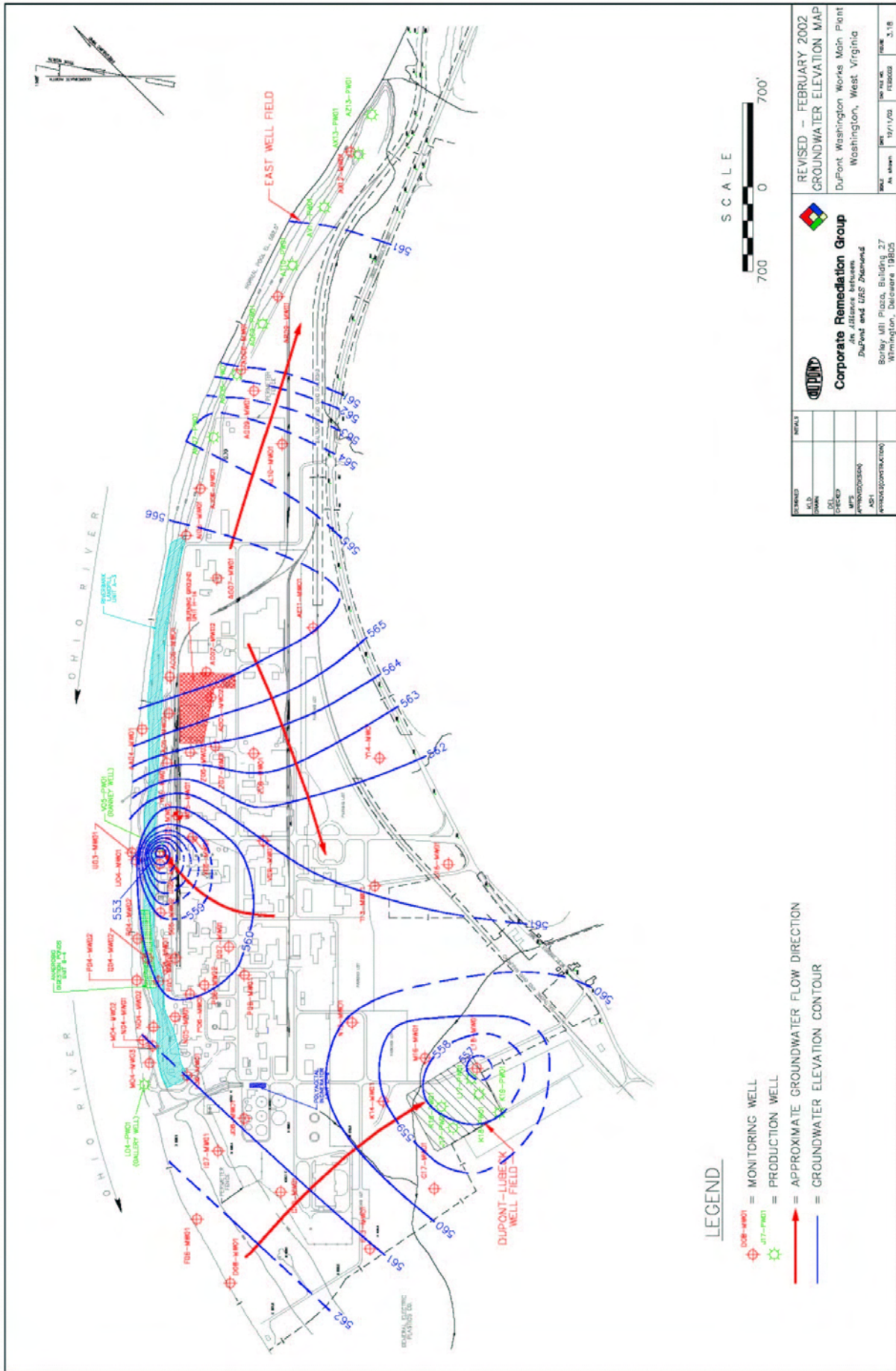


Figure 5.10: Washington Works Facility Top-of-Groundwater Map.

