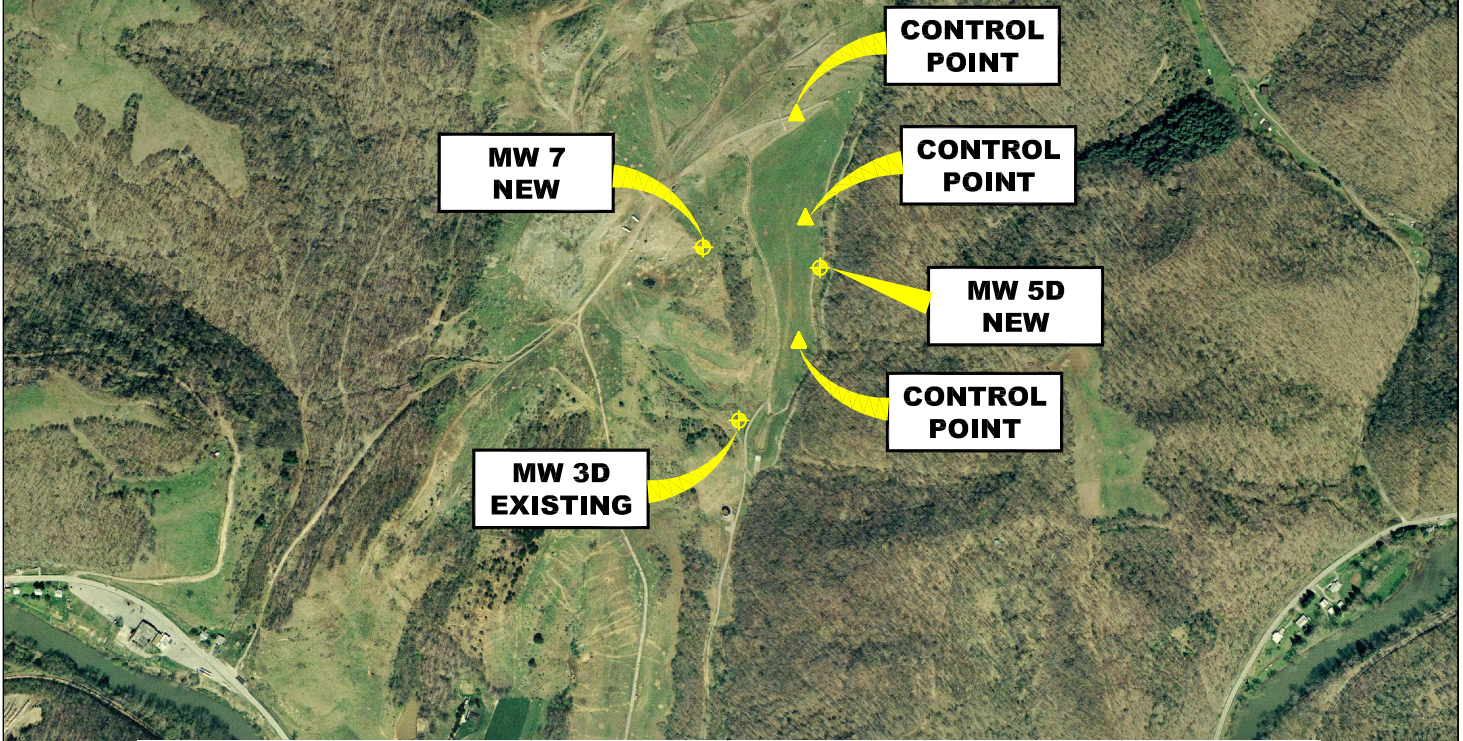


CENTRAL WV REFUSE LANDFILL



NORTHING (Y)	EASTING (X)	LATITUDE	LONGITUDE	ELEV (Z) Top of Casing	DESCRIPTION
604,754.957	2,018,247.856	38° 39' 38.3"	80° 49' 32.8"	952.22	MW 3D EXISTING
605,550.145	2,018,669.641	38° 39' 46.1"	80° 49' 27.5"	1023.09	MW 5D NEW
605,656.748	2,018,060.454	38° 39' 47.2"	80° 49' 35.1"	1120.11	MW 7 NEW
606,345.454	2,018,546.829	38° 39' 53.9"	80° 49' 29.0"	1086.78	CONTROL POINT
605,803.124	2,018,594.185	38° 39' 48.6"	80° 49' 28.4"	1042.78	CONTROL POINT
605,162.317	2,018,559.602	38° 39' 42.3"	80° 49' 28.9"	977.91	CONTROL POINT

AERIAL MAP MONITORING WELL LOCATIONS

GASSAWAY, BRAXTON COUNTY, WEST VIRGINIA

0' 100' 2,000' 3000'



SCALE: 1 INCH = 1000 FEET



Stantec Consulting Services Inc.

1 Moore Avenue
Buckhannon WV 26201
Tel. 304.472.7140
Fax. 304.472.6239
www.stantec.com

PROJECT NO.	173611044
SURVEYED BY:	WAG
DRAWN BY:	JHL
CHECKED BY:	DEM
APPROVED BY:	JHL
DATE:	SEPTEMBER 9, 2009

NOTE:
HORIZONTAL DATUM :
WEST VIRGINIA STATE PLANE COORDINATES
NAD 83 SOUTH ZONE (CORS 96).

VERTICAL DATUM : NAVD 88 GEOID 03 (CONUS)

COORDINATE UNITS : US SURVEY FOOT
DISTANCE UNITS : US SURVEY FOOT
HEIGHT UNITS : US SURVEY FOOT

SHT. NO.	2
TOTAL	2