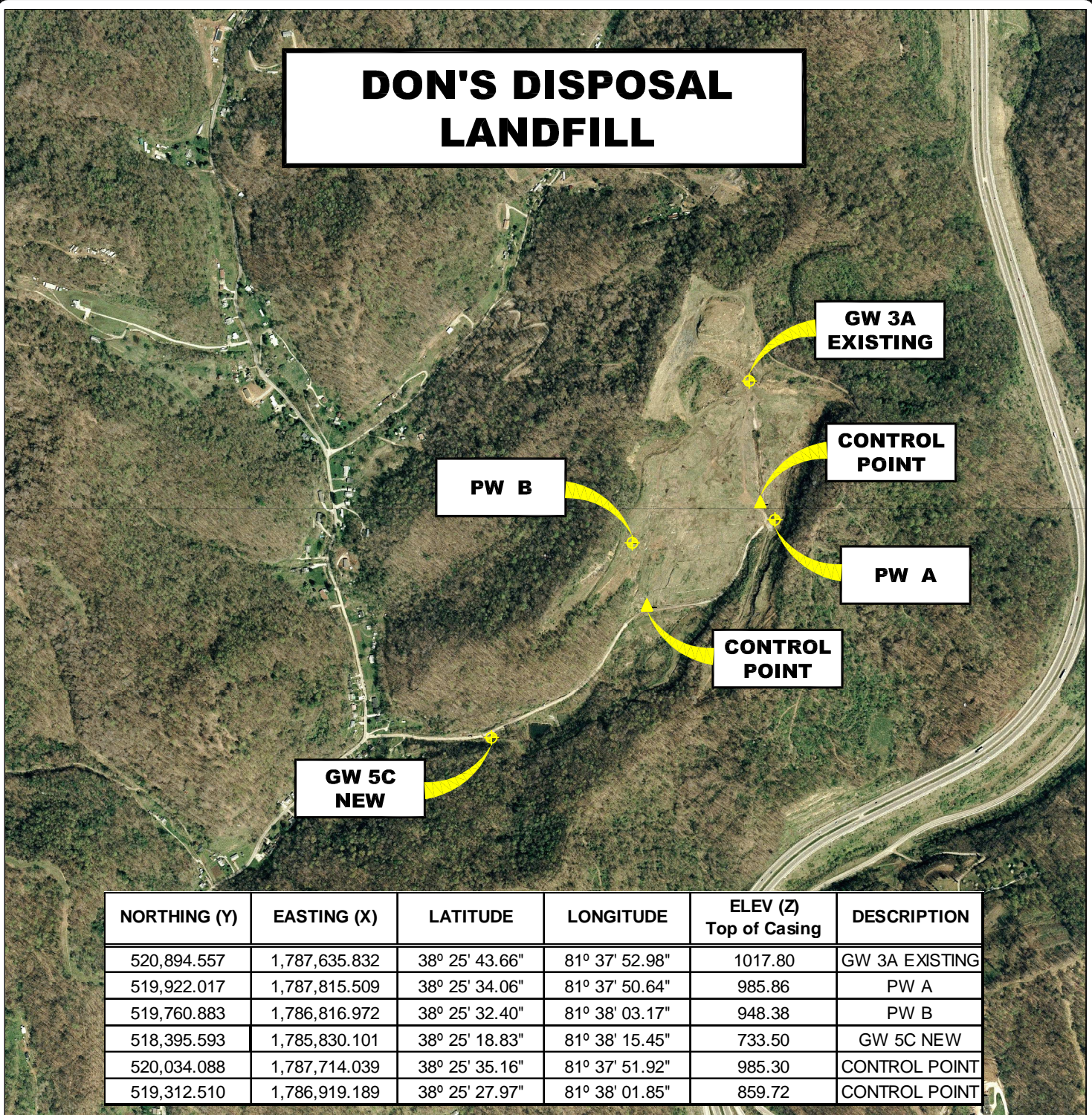


# DON'S DISPOSAL LANDFILL



NORTHING (Y)	EASTING (X)	LATITUDE	LONGITUDE	ELEV (Z) Top of Casing	DESCRIPTION
520,894.557	1,787,635.832	38° 25' 43.66"	81° 37' 52.98"	1017.80	GW 3A EXISTING
519,922.017	1,787,815.509	38° 25' 34.06"	81° 37' 50.64"	985.86	PW A
519,760.883	1,786,816.972	38° 25' 32.40"	81° 38' 03.17"	948.38	PW B
518,395.593	1,785,830.101	38° 25' 18.83"	81° 38' 15.45"	733.50	GW 5C NEW
520,034.088	1,787,714.039	38° 25' 35.16"	81° 37' 51.92"	985.30	CONTROL POINT
519,312.510	1,786,919.189	38° 25' 27.97"	81° 38' 01.85"	859.72	CONTROL POINT

## AERIAL MAP MONITORING WELL LOCATIONS

SISSONVILLE, KANAWHA COUNTY, WEST VIRGINIA

0' 1,000' 2,000' 3,000'



SCALE: 1 INCH = 1,000 FEET



### Stantec Consulting Services Inc.

1 Moore Avenue  
Buckhannon WV 26201  
Tel. 304.472.7140  
Fax. 304.472.6239  
www.stantec.com

PROJECT NO. 173611045  
SURVEYED BY: WAG  
DRAWN BY: JHL  
CHECKED BY: DEM  
APPROVED BY: JHL  
DATE: SEPTEMBER 10, 2009

NOTE:  
HORIZONTAL DATUM :  
WEST VIRGINIA STATE PLANE COORDINATES  
NAD 83 SOUTH ZONE (CORS 96).  
  
VERTICAL DATUM : NAVD 88 GEOID 03 (CONUS)  
  
COORDINATE UNITS : US SURVEY FOOT  
DISTANCE UNITS : US SURVEY FOOT  
HEIGHT UNITS : US SURVEY FOOT

SHT. NO.  
2  
TOTAL  
2