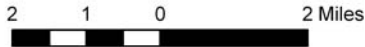
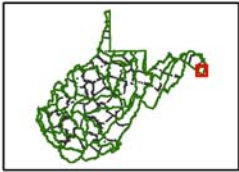
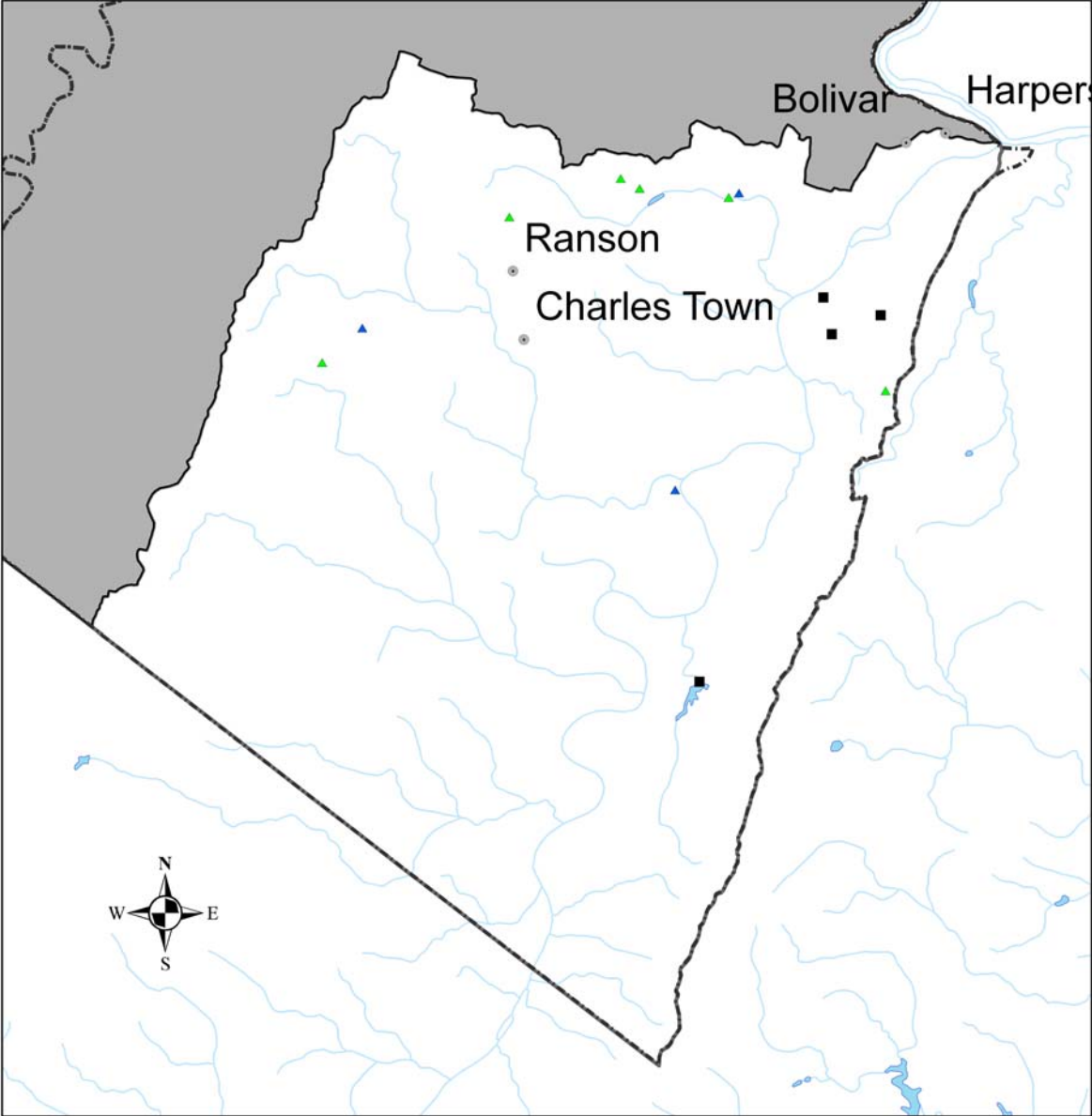
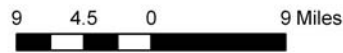
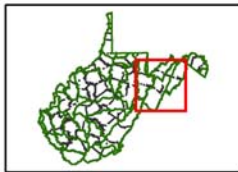
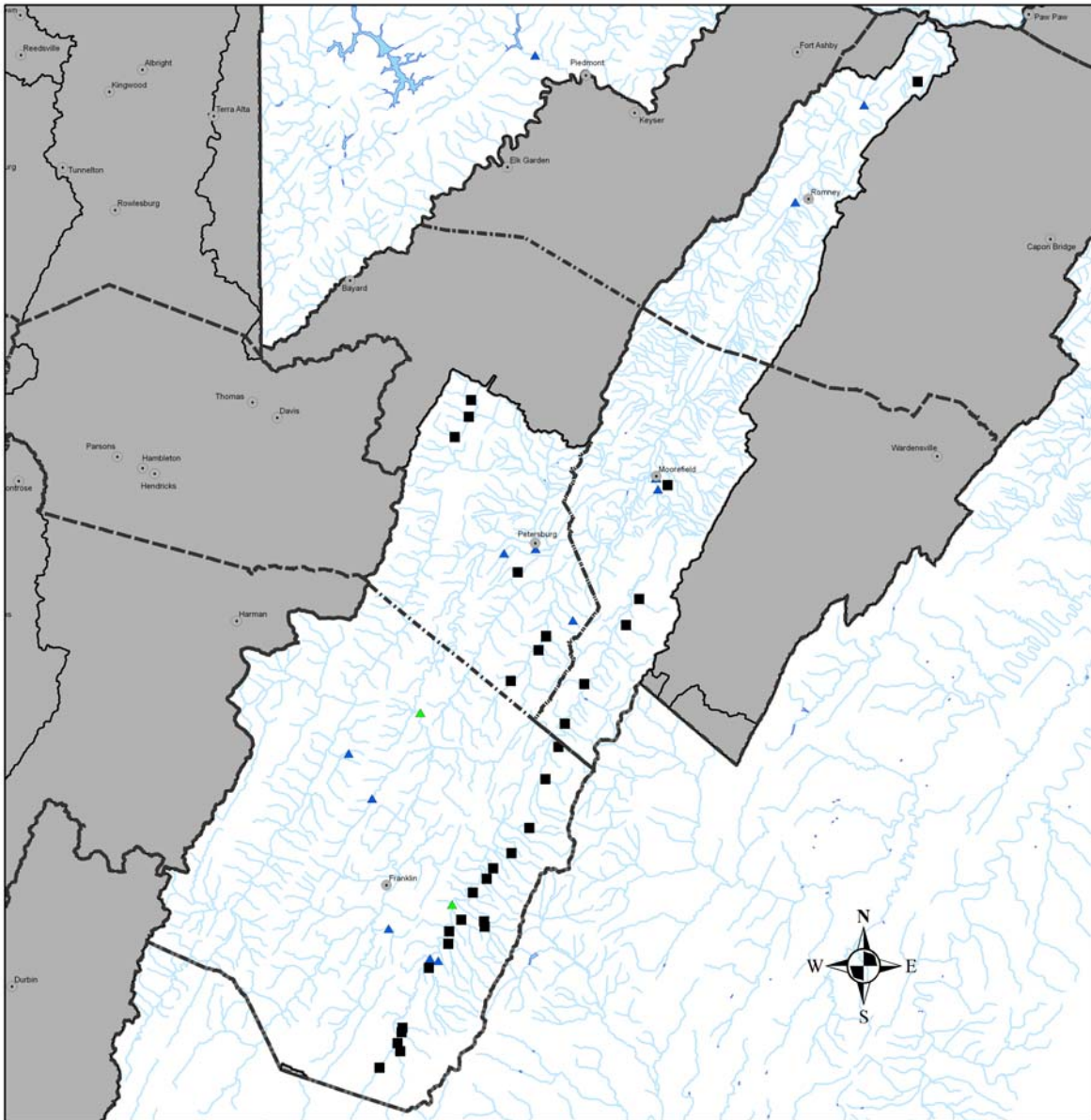


Watershed: Shenandoah Jefferson



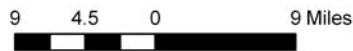
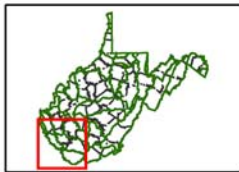
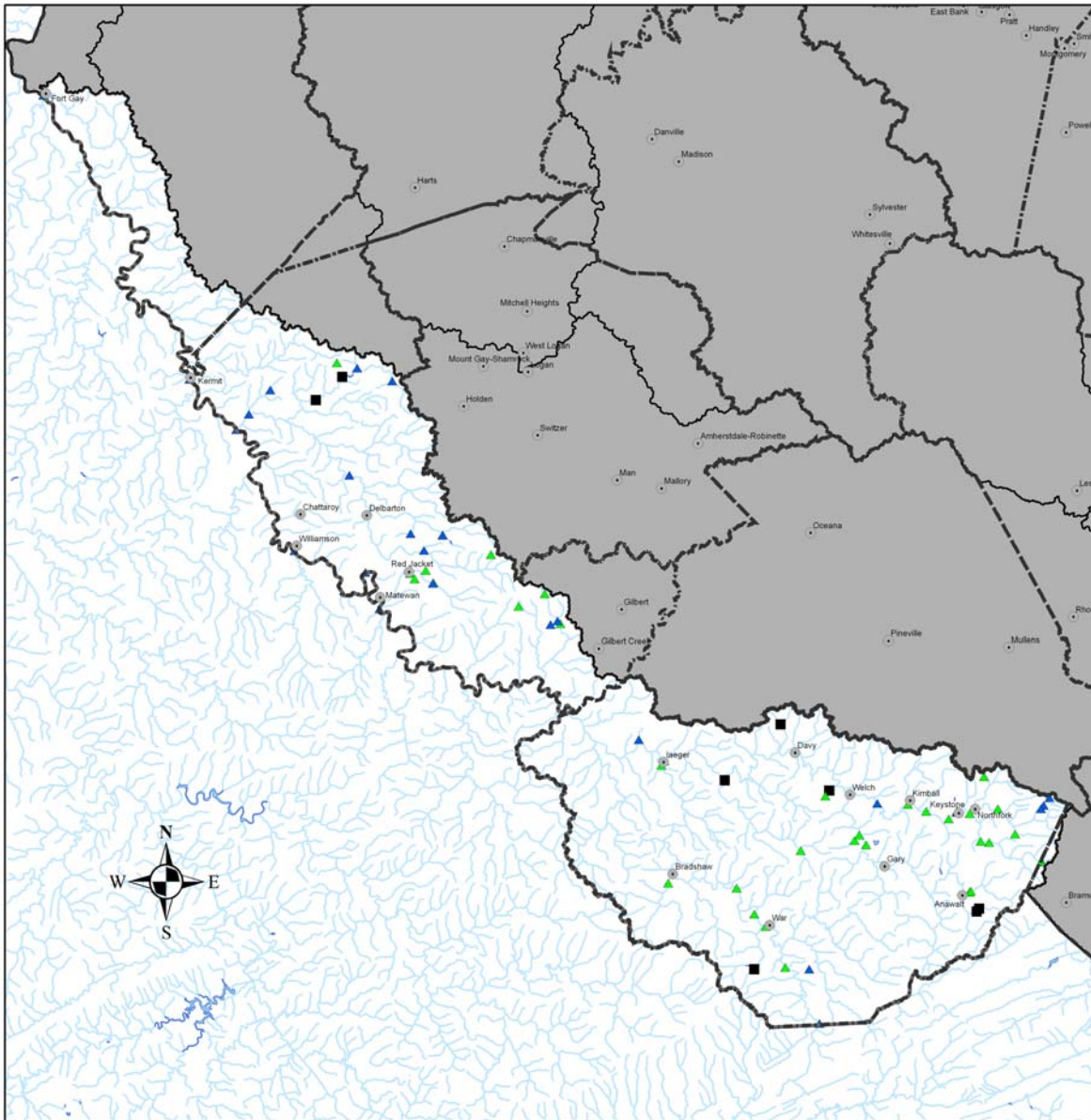
- Cities/Towns
- - - County Border
- Lake Inventory
- Lakes/Ponds
- Rivers/Streams
- ▲ Surface Water Intakes
- ▲ Ground Water Intakes

Watershed: South Branch Potomac



- Cities/Towns
- - - County Border
- Lake Inventory
- Lakes/Ponds
- Rivers/Streams
- ▲ Surface Water Intakes
- ▲ Ground Water Intakes

Watershed: Tug Fork



- Cities/Towns
- - - County Border
- Lake Inventory
- Lakes/Ponds
- Rivers/Streams
- ▲ Surface Water Intakes
- ▲ Ground Water Intakes

Watershed: Twelvepole Creek

