

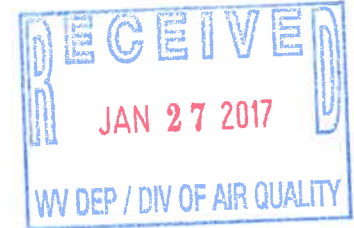


GROUP SERVICES LLC

8985 42<sup>nd</sup> Lane  
Cumming, Iowa 50061  
Telephone 515-981-3216  
Fax 515-981-3216

January 16, 2017

Beverly McKeone  
West Virginia Department of Protection  
Division of Air Quality  
601 57<sup>th</sup> Street, SE  
Charleston, WV 25304



**RE:** U.S. Cellular® - Emergency Generator Permit Determination

Dear Ms. McKeone:

ATC Group Services, LLC (ATC) was retained by U.S. Cellular® to evaluate whether their emergency generators within the State of West Virginia are required to have air permits. Based on our evaluation, please find attached a completed permit determination form for the one (1) facility generator that we are requesting a permit determination.

We believe the generator engine does not require a permit because it is the only source at the facility other than the associated diesel fuel tank and the emissions from the sources do not exceed two (2) lbs/hr or five (5) tons/year of total Hazardous Air Pollutants (HAPs); six (6) lbs/hour and ten (10) TPY of any regulated pollutant; or, trigger a substantive requirement of any State or Federal air quality regulation since the engine is certified.

Supporting documentation including the generator specification sheet, certification of conformity and emission calculations are attached. If you should have any questions, please do not hesitate to call me at (515) 981-3216.

Sincerely,  
ATC Group Services, LLC

Mike Freese, REM  
Sr. Project Manager

Attachments

cc: Ronald Lewis - Environmental Health & Safety Manager – U.S. Cellular  
Lynn Skorek - Environmental Health & Safety Coordinator - U.S. Cellular  
Scott Hunter – Manager Network Operations – U.S. Cellular  
Craig Amick – Network Field Engineer – U.S. Cellular



WEST VIRGINIA  
DEPARTMENT OF ENVIRONMENTAL PROTECTION  
DIVISION OF AIR QUALITY  
601 57<sup>th</sup> Street, SE  
Charleston, WV 25304  
Phone: (304) 926-0475  
www.dep.wv.gov/daq

**PERMIT DETERMINATION FORM  
(PDF)**

FOR AGENCY USE ONLY: PLANT I.D. # \_\_\_\_\_

PDF # \_\_\_\_\_ PERMIT WRITER: \_\_\_\_\_

1. NAME OF APPLICANT (AS REGISTERED WITH THE WV SECRETARY OF STATE'S OFFICE):

Hardy Cellular Telephone Company

2. NAME OF FACILITY (IF DIFFERENT FROM ABOVE):

US Cellular – Independence - 416547

3. NORTH AMERICAN INDUSTRY  
CLASSIFICATION SYSTEM (NAICS)  
CODE:

**517212**

4A. MAILING ADDRESS:

US Cellular, 8410\_W. Bryn Mawr Avenue, Chicago, IL 60631

4B. PHYSICAL ADDRESS:

365 Independence Road, Lizemores, WV 25125

5A. DIRECTIONS TO FACILITY (PLEASE PROVIDE MAP AS ATTACHMENT A):

From Lizemores, WV take SR 16 South for approximately 2 miles to Independence Road. Turn Right onto Independence Road and cell tower on the left side.

5B. NEAREST ROAD:

Independence Road

5C. NEAREST CITY OR TOWN:

Lizemores

5D. COUNTY:

Clay

5E. UTM NORTHING (KM):

4240.63505

5F. UTM EASTING (KM):

484.21967

5G. UTM ZONE:

17S

6A. INDIVIDUAL TO CONTACT IF MORE INFORMATION IS REQUIRED:

Ronald Lewis

6B. TITLE:

Manager, Environmental Health & Safety

6C. TELEPHONE:

(773) 355-3717

6D. FAX:

(866) 871-6425

6E. E-MAIL:

Ronald.lewis@uscellular.com

7A. DAQ PLANT I.D. NO. (FOR AN EXISTING FACILITY ONLY):

7B. PLEASE LIST ALL CURRENT 45CSR13, 45CSR14, 45CSR19 AND/OR TITLE V (45CSR30) PERMIT NUMBERS ASSOCIATED WITH THIS PROCESS (FOR AN EXISTING FACILITY ONLY):

7C. IS THIS PDF BEING SUBMITTED AS THE RESULT OF AN ENFORCEMENT ACTION? IF YES, PLEASE LIST:

8A. TYPE OF EMISSION SOURCE (CHECK ONE):

- NEW SOURCE     ADMINISTRATIVE UPDATE  
 MODIFICATION     OTHER (PLEASE EXPLAIN IN 11B)

8B. IF ADMINISTRATIVE UPDATE, DOES DAQ HAVE THE APPLICANT'S CONSENT TO UPDATE THE EXISTING PERMIT WITH THE INFORMATION CONTAINED HEREIN?

YES     NO

9. IS DEMOLITION OR PHYSICAL RENOVATION AT AN EXISTING FACILITY INVOLVED?     YES     NO

10A. DATE OF ANTICIPATED INSTALLATION OR CHANGE:

12/15/15

10B. DATE OF ANTICIPATED START-UP:

12/15/15

11A. PLEASE PROVIDE A DETAILED PROCESS FLOW DIAGRAM SHOWING EACH PROPOSED OR MODIFIED PROCESS EMISSION POINT AS ATTACHMENT B.

11B. PLEASE PROVIDE A DETAILED PROCESS DESCRIPTION AS ATTACHMENT C.

12. PLEASE PROVIDE MATERIAL SAFETY DATA SHEETS (MSDS) FOR ALL MATERIALS PROCESSED, USED OR PRODUCED AS ATTACHMENT D. FOR CHEMICAL PROCESSES, PLEASE PROVIDE A MSDS FOR EACH COMPOUND EMITTED TO AIR.

**13A. REGULATED AIR POLLUTANT EMISSIONS:**

⇒ **FOR A NEW FACILITY**, PLEASE PROVIDE PLANT WIDE EMISSIONS BASED ON THE POTENTIAL TO EMIT (PTE) FOR THE FOLLOWING AIR POLLUTANTS INCLUDING ALL PROCESSES.  
 ⇒ **FOR AN EXISTING FACILITY**, PLEASE PROVIDE THE PROPOSED CHANGE IN EMISSIONS BASED ON THE PTE OF ALL PROCESS CHANGES FOR THE FOLLOWING AIR POLLUTANTS.  
*PTE FOR A GIVEN POLLUTANT IS TYPICALLY BEFORE AIR POLLUTION CONTROL DEVICES AND IS COLLECTED BASED ON THE MAXIMUM DESIGN CAPACITY OF PROCESS EQUIPMENT.*

POLLUTANT	HOURLY PTE (LB/HR)	YEARLY PTE (TON/YR) (HOURLY PTE MULTIPLIED BY 8760 HR/YR) DIVIDED BY 2000 LB/TON
PM	0.183(AP42)	0.046(AP42)
PM <sub>10</sub>	0.183(AP42)	0.046(AP42)
VOCs	0.212(AP42)	0.053(AP42)
CO	0.559(AP42)	0.140(AP42)
NO <sub>x</sub>	2.597(AP42)	0.043(AP42)
SO <sub>2</sub>	0.171(AP42)	0.54(AP42)
Pb	NA	NA
HAPs (AGGREGATE AMOUNT)	NA	NA
TAPs (INDIVIDUALLY)*	NA	NA
OTHER (INDIVIDUALLY)*	NA	NA

\* ATTACH ADDITIONAL PAGES AS NEEDED (Test Data is attached on the Emission Data Sheet)

**13B. PLEASE PROVIDE ALL SUPPORTING CALCULATIONS AS ATTACHMENT E.**

*CALCULATE AN HOURLY AND YEARLY PTE OF EACH PROCESS EMISSION POINT (SHOWN IN YOUR DETAILED PROCESS FLOW DIAGRAM) FOR ALL AIR POLLUTANTS LISTED ABOVE INCLUDING INDIVIDUAL HAP'S (LISTED IN SECTION 112[b] OF THE 1990 CAAA), TAP'S (LISTED IN 45CSR27), AND OTHER AIR POLLUTANTS (E.G. POLLUTANTS LISTED IN TABLE 45-13A OF 45CSR13, MINERAL ACIDS PER 45CSR7, ETC.).*

**14. CERTIFICATION OF DATA**

I, RONALD LEWIS (TYPE NAME) ATTEST THAT ALL THE REPRESENTATIONS CONTAINED IN THIS APPLICATION, OR APPENDED HERETO, ARE TRUE, ACCURATE, AND COMPLETE TO THE BEST OF MY KNOWLEDGE BASED ON INFORMATION AND BELIEF AFTER REASONABLE INQUIRY, AND THAT I AM A **RESPONSIBLE OFFICIAL**\*\* (PRESIDENT, VICE PRESIDENT, SECRETARY OR TREASURER, GENERAL PARTNER OR SOLE PROPRIETOR) OF THE APPLICANT.

SIGNATURE OF RESPONSIBLE OFFICIAL: \_\_\_\_\_



TITLE: MANAGER, ENVIRONMENTAL HEALTH & SAFETY

DATE: 1/16/17

\*\* THE DEFINITION OF THE PHRASE 'RESPONSIBLE OFFICIAL' CAN BE FOUND AT 45CSR13, SECTION 2.23.

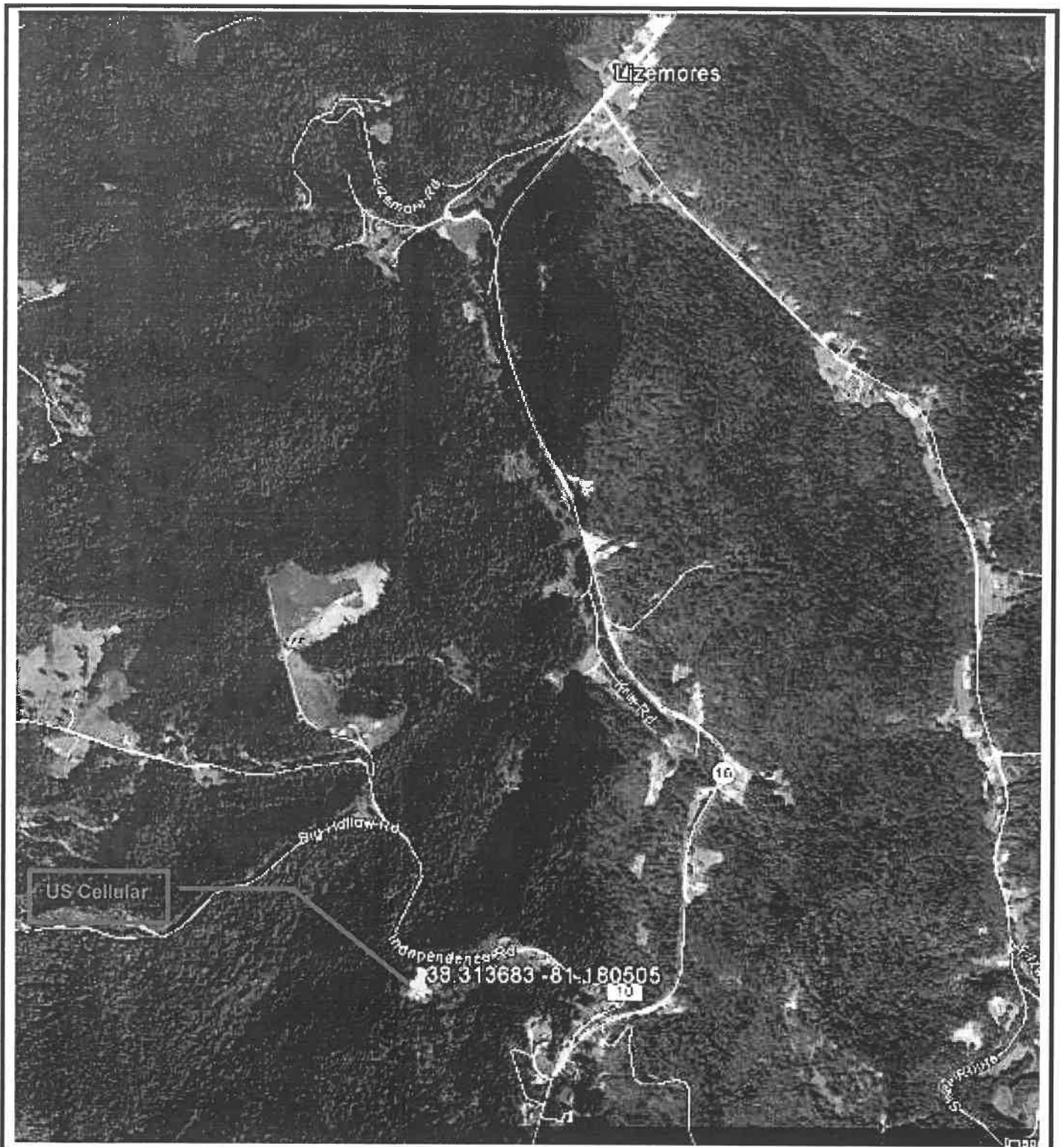
**NOTE: PLEASE CHECK ENCLOSED ATTACHMENTS:**

ATTACHMENT A     ATTACHMENT B     ATTACHMENT C     ATTACHMENT D     ATTACHMENT E

RECORDS ON ALL CHANGES ARE REQUIRED TO BE KEPT AND MAINTAINED ON-SITE FOR TWO (2) YEARS.

THE PERMIT DETERMINATION FORM WITH THE INSTRUCTIONS CAN BE FOUND ON DAQ'S PERMITTING SECTION WEB SITE:

[www.dep.wv.gov/daq](http://www.dep.wv.gov/daq)



ENVIRONMENTAL - GEOTECHNICAL  
BUILDING SCIENCES - MATERIALS TESTING

4905 Hubbell Avenue  
Des Moines, IA 50317

PROJECT NO: 204EM00565

DESIGNED BY: ATC	SCALE: 1"~0.20 mi.	REVIEWED BY: MAF
DRAWN BY: MAF	DATE: 1/13/17	FILE: Vicinity Map

**ATTACHMENT A – Vicinity Map**

US Cellular – Independence  
365 Independence Road  
Lizemores, WV 25125

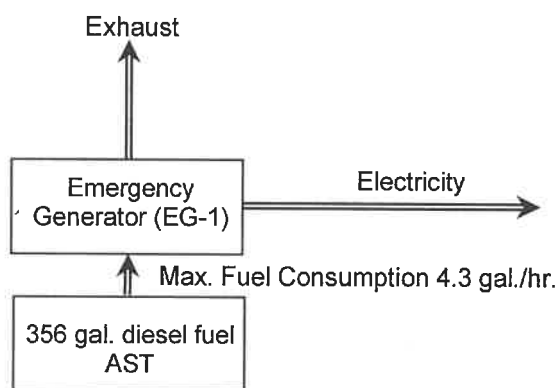


# Process Description & Process Flow Diagram

## Process Description

This facility is a telecommunication cell tower facility. The only regulated emission source at the facility is Kohler 50REOZJC emergency generator subject to 40 CFR 60 Subpart III. A 356 gallon diesel fuel integrated above ground tank (belly tank) fuels the generator. The tank is not a regulated emission source for air permitting. No modifications are proposed for the emission source.

## Process Flow Diagram





# Safety Data Sheet

**Material Name: Diesel Fuel, All Types**

**SDS No. 9909**  
US GHS

**Synonyms:** Ultra Low Sulfur Diesel; Low Sulfur Diesel; No. 2 Diesel; Motor Vehicle Diesel Fuel; Non-Road Diesel Fuel; Locomotive/Marine Diesel Fuel

## \*\*\* Section 1 - Product and Company Identification \*\*\*

### Manufacturer Information

Hess Corporation  
1 Hess Plaza  
Woodbridge, NJ 07095-0961

Phone: 732-750-6000 Corporate EHS  
Emergency # 800-424-9300 CHEMTREC  
[www.hess.com](http://www.hess.com) (Environment, Health, Safety Internet Website)

## \*\*\* Section 2 - Hazards Identification \*\*\*

### GHS Classification:

Flammable Liquids - Category 3  
Skin Corrosion/Irritation – Category 2  
Germ Cell Mutagenicity – Category 2  
Carcinogenicity - Category 2  
Specific Target Organ Toxicity (Single Exposure) - Category 3 (respiratory irritation, narcosis)  
Aspiration Hazard – Category 1  
Hazardous to the Aquatic Environment, Acute Hazard – Category 3

### GHS LABEL ELEMENTS

#### Symbol(s)



#### Signal Word

DANGER

#### Hazard Statements

Flammable liquid and vapor.  
Causes skin irritation.  
Suspected of causing genetic defects.  
Suspected of causing cancer.  
May cause respiratory irritation.  
May cause drowsiness or dizziness.  
May be fatal if swallowed and enters airways.  
Harmful to aquatic life.

#### Precautionary Statements

##### Prevention

Keep away from heat/sparks/open flames/hot surfaces. No smoking  
Keep container tightly closed.  
Ground/bond container and receiving equipment.

# Safety Data Sheet

Material Name: Diesel Fuel, All Types

SDS No. 9909

Use explosion-proof electrical/ventilating/lighting/equipment.  
Use only non-sparking tools.  
Take precautionary measures against static discharge.  
Wear protective gloves/protective clothing/eye protection/face protection.  
Wash hands and forearms thoroughly after handling.  
Obtain special instructions before use.  
Do not handle until all safety precautions have been read and understood.  
Avoid breathing fume/mist/vapours/spray.

## Response

In case of fire: Use water spray, fog or foam to extinguish.  
IF ON SKIN (or hair): Wash with plenty of soap and water. Remove/Take off immediately all contaminated clothing and wash it before reuse. If skin irritation occurs: Get medical advice/attention.  
IF INHALED: Remove person to fresh air and keep comfortable for breathing. Call a poison center/doctor if you feel unwell.  
If swallowed: Immediately call a poison center or doctor. Do NOT induce vomiting.  
IF exposed or concerned: Get medical advice/attention.

## Storage

Store in a well-ventilated place. Keep cool.  
Keep container tightly closed.  
Store locked up.

## Disposal

Dispose of contents/container in accordance with local/regional/national/international regulations.

### \*\*\* Section 3 - Composition / Information on Ingredients \*\*\*

CAS #	Component	Percent
68476-34-6	Fuels, diesel, no. 2	100
91-20-3	Naphthalene	<0.1

A complex mixture of hydrocarbons with carbon numbers in the range C9 and higher.

### \*\*\* Section 4 - First Aid Measures \*\*\*

#### First Aid: Eyes

In case of contact with eyes, immediately flush with clean, low-pressure water for at least 15 min. Hold eyelids open to ensure adequate flushing. Seek medical attention.

#### First Aid: Skin

Remove contaminated clothing. Wash contaminated areas thoroughly with soap and water or with waterless hand cleanser. Obtain medical attention if irritation or redness develops. Thermal burns require immediate medical attention depending on the severity and the area of the body burned.

#### First Aid: Ingestion

DO NOT INDUCE VOMITING. Do not give liquids. Obtain immediate medical attention. If spontaneous vomiting occurs, lean victim forward to reduce the risk of aspiration. Monitor for breathing difficulties. Small amounts of material which enter the mouth should be rinsed out until the taste is dissipated.

# Safety Data Sheet

Material Name: Diesel Fuel, All Types

SDS No. 9909

## First Aid: Inhalation

Remove person to fresh air. If person is not breathing, provide artificial respiration. If necessary, provide additional oxygen once breathing is restored if trained to do so. Seek medical attention immediately.

## \*\*\* Section 5 - Fire Fighting Measures \*\*\*

### General Fire Hazards

See Section 9 for Flammability Properties.

Vapors may be ignited rapidly when exposed to heat, spark, open flame or other source of ignition. When mixed with air and exposed to an ignition source, flammable vapors can burn in the open or explode in confined spaces. Being heavier than air, vapors may travel long distances to an ignition source and flash back. Runoff to sewer may cause fire or explosion hazard.

### Hazardous Combustion Products

Carbon monoxide, carbon dioxide and non-combusted hydrocarbons (smoke).

### Extinguishing Media

SMALL FIRES: Any extinguisher suitable for Class B fires, dry chemical, CO<sub>2</sub>, water spray, fire fighting foam, and other gaseous agents.

LARGE FIRES: Water spray, fog or fire fighting foam. Water may be ineffective for fighting the fire, but may be used to cool fire-exposed containers.

### Unsuitable Extinguishing Media

None

### Fire Fighting Equipment/Instructions

Small fires in the incipient (beginning) stage may typically be extinguished using handheld portable fire extinguishers and other fire fighting equipment. Firefighting activities that may result in potential exposure to high heat, smoke or toxic by-products of combustion should require NIOSH/MSHA- approved pressure-demand self-contained breathing apparatus with full facepiece and full protective clothing. Isolate area around container involved in fire. Cool tanks, shells, and containers exposed to fire and excessive heat with water. For massive fires the use of unmanned hose holders or monitor nozzles may be advantageous to further minimize personnel exposure. Major fires may require withdrawal, allowing the tank to burn. Large storage tank fires typically require specially trained personnel and equipment to extinguish the fire, often including the need for properly applied fire fighting foam.

## \*\*\* Section 6 - Accidental Release Measures \*\*\*

### Recovery and Neutralization

Carefully contain and stop the source of the spill, if safe to do so.

### Materials and Methods for Clean-Up

Take up with sand or other oil absorbing materials. Carefully shovel, scoop or sweep up into a waste container for reclamation or disposal. Caution, flammable vapors may accumulate in closed containers.

### Emergency Measures

Evacuate nonessential personnel and remove or secure all ignition sources. Consider wind direction; stay upwind and uphill, if possible. Evaluate the direction of product travel, diking, sewers, etc. to confirm spill areas. Spills may infiltrate subsurface soil and groundwater; professional assistance may be necessary to determine the extent of subsurface impact.



# Safety Data Sheet

Material Name: Diesel Fuel, All Types

SDS No. 9909

## Personal Precautions and Protective Equipment

Response and clean-up crews must be properly trained and must utilize proper protective equipment (see Section 8).

## Environmental Precautions

Protect bodies of water by diking, absorbents, or absorbent boom, if possible. Do not flush down sewer or drainage systems, unless system is designed and permitted to handle such material. The use of fire fighting foam may be useful in certain situations to reduce vapors. The proper use of water spray may effectively disperse product vapors or the liquid itself, preventing contact with ignition sources or areas/equipment that require protection.

## Prevention of Secondary Hazards

None

## \* \* \* Section 7 - Handling and Storage \* \* \*

### Handling Procedures

Handle as a combustible liquid. Keep away from heat, sparks, excessive temperatures and open flame! No smoking or open flame in storage, use or handling areas. Bond and ground containers during product transfer to reduce the possibility of static-initiated fire or explosion.

Special slow load procedures for "switch loading" must be followed to avoid the static ignition hazard that can exist when higher flash point material (such as fuel oil) is loaded into tanks previously containing low flash point products (such as this product) - see API Publication 2003, "Protection Against Ignitions Arising Out Of Static, Lightning and Stray Currents."

### Storage Procedures

Keep away from flame, sparks, excessive temperatures and open flame. Use approved vented containers. Keep containers closed and clearly labeled. Empty product containers or vessels may contain explosive vapors. Do not pressurize, cut, heat, weld or expose such containers to sources of ignition.

Store in a well-ventilated area. This storage area should comply with NFPA 30 "Flammable and Combustible Liquid Code". Avoid storage near incompatible materials. The cleaning of tanks previously containing this product should follow API Recommended Practice (RP) 2013 "Cleaning Mobile Tanks In Flammable and Combustible Liquid Service" and API RP 2015 "Cleaning Petroleum Storage Tanks."

### Incompatibilities

Keep away from strong oxidizers.

## \* \* \* Section 8 - Exposure Controls / Personal Protection \* \* \*

### Component Exposure Limits

#### Fuels, diesel, no. 2 (68476-34-6)

ACGIH: 100 mg/m<sup>3</sup> TWA (inhalable fraction and vapor, as total hydrocarbons, listed under Diesel fuel)  
Skin - potential significant contribution to overall exposure by the cutaneous route (listed under Diesel fuel)

# Safety Data Sheet

Material Name: Diesel Fuel, All Types

SDS No. 9909

## Naphthalene (91-20-3)

ACGIH: 10 ppm TWA  
15 ppm STEL  
Skin - potential significant contribution to overall exposure by the cutaneous route  
OSHA: 10 ppm TWA; 50 mg/m<sup>3</sup> TWA  
NIOSH: 10 ppm TWA; 50 mg/m<sup>3</sup> TWA  
15 ppm STEL; 75 mg/m<sup>3</sup> STEL

## Engineering Measures

Use adequate ventilation to keep vapor concentrations of this product below occupational exposure and flammability limits, particularly in confined spaces.

## Personal Protective Equipment: Respiratory

A NIOSH/MSHA-approved air-purifying respirator with organic vapor cartridges or canister may be permissible under certain circumstances where airborne concentrations are or may be expected to exceed exposure limits or for odor or irritation. Protection provided by air-purifying respirators is limited.

Use a positive pressure, air-supplied respirator if there is a potential for uncontrolled release, exposure levels are not known, in oxygen-deficient atmospheres, or any other circumstance where an air-purifying respirator may not provide adequate protection.

## Personal Protective Equipment: Hands

Gloves constructed of nitrile, neoprene, or PVC are recommended.

## Personal Protective Equipment: Eyes

Safety glasses or goggles are recommended where there is a possibility of splashing or spraying.

## Personal Protective Equipment: Skin and Body

Chemical protective clothing such as of E.I. DuPont TyChem®, Saranex® or equivalent recommended based on degree of exposure. Note: The resistance of specific material may vary from product to product as well as with degree of exposure. Consult manufacturer specifications for further information.

## \*\*\* Section 9 - Physical & Chemical Properties \*\*\*

<b>Appearance:</b>	Clear, straw-yellow.	<b>Odor:</b>	Mild, petroleum distillate odor
<b>Physical State:</b>	Liquid	<b>pH:</b>	ND
<b>Vapor Pressure:</b>	0.009 psia @ 70 °F (21 °C)	<b>Vapor Density:</b>	>1.0
<b>Boiling Point:</b>	320 to 690 °F (160 to 366 °C)	<b>Melting Point:</b>	ND
<b>Solubility (H<sub>2</sub>O):</b>	Negligible	<b>Specific Gravity:</b>	0.83-0.876 @ 60°F (16°C)
<b>Evaporation Rate:</b>	Slow; varies with conditions	<b>VOC:</b>	ND
<b>Percent Volatile:</b>	100%	<b>Octanol/H<sub>2</sub>O Coeff.:</b>	ND
<b>Flash Point:</b>	>125 °F (>52 °C) minimum	<b>Flash Point Method:</b>	PMCC
<b>Upper Flammability Limit (UFL):</b>	7.5	<b>Lower Flammability Limit (LFL):</b>	0.6
<b>Burning Rate:</b>	ND	<b>Auto Ignition:</b>	494°F (257°C)

## \*\*\* Section 10 - Chemical Stability & Reactivity Information \*\*\*

### Chemical Stability

This is a stable material.

### Hazardous Reaction Potential

Will not occur.

# Safety Data Sheet

Material Name: Diesel Fuel, All Types

SDS No. 9909

## Conditions to Avoid

Avoid high temperatures, open flames, sparks, welding, smoking and other ignition sources.

## Incompatible Products

Keep away from strong oxidizers.

## Hazardous Decomposition Products

Carbon monoxide, carbon dioxide and non-combusted hydrocarbons (smoke).

## \* \* \* Section 11 - Toxicological Information \* \* \*

### Acute Toxicity

#### A: General Product Information

Harmful if swallowed.

#### B: Component Analysis - LD50/LC50

##### Naphthalene (91-20-3)

Inhalation LC50 Rat >340 mg/m<sup>3</sup> 1 h; Oral LD50 Rat 490 mg/kg; Dermal LD50 Rat >2500 mg/kg; Dermal LD50 Rabbit >20 g/kg

### Potential Health Effects: Skin Corrosion Property/Stimulativeness

Practically non-toxic if absorbed following acute (single) exposure. May cause skin irritation with prolonged or repeated contact. Liquid may be absorbed through the skin in toxic amounts if large areas of skin are repeatedly exposed.

### Potential Health Effects: Eye Critical Damage/ Stimulativeness

Contact with eyes may cause mild irritation.

### Potential Health Effects: Ingestion

Ingestion may cause gastrointestinal disturbances, including irritation, nausea, vomiting and diarrhea, and central nervous system (brain) effects similar to alcohol intoxication. In severe cases, tremors, convulsions, loss of consciousness, coma, respiratory arrest, and death may occur.

### Potential Health Effects: Inhalation

Excessive exposure may cause irritations to the nose, throat, lungs and respiratory tract. Central nervous system (brain) effects may include headache, dizziness, loss of balance and coordination, unconsciousness, coma, respiratory failure, and death.

WARNING: the burning of any hydrocarbon as a fuel in an area without adequate ventilation may result in hazardous levels of combustion products, including carbon monoxide, and inadequate oxygen levels, which may cause unconsciousness, suffocation, and death.

### Respiratory Organs Sensitization/Skin Sensitization

This product is not reported to have any skin sensitization effects.

### Generative Cell Mutagenicity

This material has been positive in a mutagenicity study.

### Carcinogenicity

#### A: General Product Information

Suspected of causing cancer.

# Safety Data Sheet

Material Name: Diesel Fuel, All Types

SDS No. 9909

Studies have shown that similar products produce skin tumors in laboratory animals following repeated applications without washing or removal. The significance of this finding to human exposure has not been determined. Other studies with active skin carcinogens have shown that washing the animal's skin with soap and water between applications reduced tumor formation.

## B: Component Carcinogenicity

### Fuels, diesel, no. 2 (68476-34-6)

ACGIH: A3 - Confirmed Animal Carcinogen with Unknown Relevance to Humans (listed under Diesel fuel)

### Naphthalene (91-20-3)

ACGIH: A4 - Not Classifiable as a Human Carcinogen

NTP: Reasonably Anticipated To Be A Human Carcinogen (Possible Select Carcinogen)

IARC: Monograph 82 [2002] (Group 2B (possibly carcinogenic to humans))

## Reproductive Toxicity

This product is not reported to have any reproductive toxicity effects.

## Specified Target Organ General Toxicity: Single Exposure

This product is not reported to have any specific target organ general toxicity single exposure effects.

## Specified Target Organ General Toxicity: Repeated Exposure

This product is not reported to have any specific target organ general toxicity repeat exposure effects.

## Aspiration Respiratory Organs Hazard

The major health threat of ingestion occurs from the danger of aspiration (breathing) of liquid drops into the lungs, particularly from vomiting. Aspiration may result in chemical pneumonia (fluid in the lungs), severe lung damage, respiratory failure and even death.

## \*\*\* Section 12 - Ecological Information \*\*\*

## Ecotoxicity

### A: General Product Information

Keep out of sewers, drainage areas and waterways. Report spills and releases, as applicable, under Federal and State regulations.

### B: Component Analysis - Ecotoxicity - Aquatic Toxicity

#### Fuels, diesel, no. 2 (68476-34-6)

##### Test & Species

96 Hr LC50 Pimephales promelas 35 mg/L [flow-through]

##### Conditions

#### Naphthalene (91-20-3)

##### Test & Species

96 Hr LC50 Pimephales promelas 5.74-6.44 mg/L [flow-through]

##### Conditions

96 Hr LC50 Oncorhynchus mykiss 1.6 mg/L [flow-through]

96 Hr LC50 Oncorhynchus mykiss 0.91-2.82 mg/L [static]

96 Hr LC50 Pimephales promelas 1.99 mg/L [static]

# Safety Data Sheet

Material Name: Diesel Fuel, All Types

SDS No. 9909

96 Hr LC50 Lepomis macrochirus	31.0265 mg/L [static]
72 Hr EC50 Skeletonema costatum	0.4 mg/L
48 Hr LC50 Daphnia magna	2.16 mg/L
48 Hr EC50 Daphnia magna	1.96 mg/L [Flow through]
48 Hr EC50 Daphnia magna	1.09 - 3.4 mg/L [Static]

## Persistence/Degradability

No information available.

## Bioaccumulation

No information available.

## Mobility in Soil

No information available.

### \*\*\* Section 13 - Disposal Considerations \*\*\*

## Waste Disposal Instructions

See Section 7 for Handling Procedures. See Section 8 for Personal Protective Equipment recommendations.

## Disposal of Contaminated Containers or Packaging

Dispose of contents/container in accordance with local/regional/national/international regulations.

### \*\*\* Section 14 - Transportation Information \*\*\*

## DOT Information

Shipping Name: Diesel Fuel

NA #: 1993 Hazard Class: 3 Packing Group: III

Placard:



### \*\*\* Section 15 - Regulatory Information \*\*\*

## Regulatory Information

### Component Analysis

This material contains one or more of the following chemicals required to be identified under SARA Section 302 (40 CFR 355 Appendix A), SARA Section 313 (40 CFR 372.65) and/or CERCLA (40 CFR 302.4).

#### Naphthalene (91-20-3)

CERCLA: 100 lb final RQ; 45.4 kg final RQ

### SARA Section 311/312 – Hazard Classes

<u>Acute Health</u>	<u>Chronic Health</u>	<u>Fire</u>	<u>Sudden Release of Pressure</u>	<u>Reactive</u>
X	X	X	--	--

# Safety Data Sheet

Material Name: Diesel Fuel, All Types

SDS No. 9909

## SARA SECTION 313 - SUPPLIER NOTIFICATION

This product may contain listed chemicals below the de minimis levels which therefore are not subject to the supplier notification requirements of Section 313 of the Emergency Planning and Community Right-To-Know Act (EPCRA) of 1986 and of 40 CFR 372. If you may be required to report releases of chemicals listed in 40 CFR 372.28, you may contact Hess Corporate Safety if you require additional information regarding this product.

## State Regulations

### Component Analysis - State

The following components appear on one or more of the following state hazardous substances lists:

Component	CAS	CA	MA	MN	NJ	PA	RI
Fuels, diesel, no. 2	68476-34-6	No	No	No	Yes	No	No
Naphthalene	91-20-3	Yes	Yes	Yes	Yes	Yes	No

The following statement(s) are provided under the California Safe Drinking Water and Toxic Enforcement Act of 1986 (Proposition 65):

WARNING! This product contains a chemical known to the state of California to cause cancer.

### Component Analysis - WHMIS IDL

No components are listed in the WHMIS IDL.

### Additional Regulatory Information

### Component Analysis - Inventory

Component	CAS #	TSCA	CAN	EEC
Fuels, diesel, no. 2	68476-34-6	Yes	DSL	EINECS
Naphthalene	91-20-3	Yes	DSL	EINECS

## \*\*\* Section 16 - Other Information \*\*\*

**NFPA® Hazard Rating**

Health	1
Fire	2
Reactivity	0



**HMIS® Hazard Rating**

Health	1*	Slight
Fire	2	Moderate
Physical	0	Minimal

\*Chronic

# Safety Data Sheet

Material Name: Diesel Fuel, All Types

SDS No. 9909

## Key/Legend

ACGIH = American Conference of Governmental Industrial Hygienists; ADG = Australian Code for the Transport of Dangerous Goods by Road and Rail; ADR/RID = European Agreement of Dangerous Goods by Road/Rail; AS = Standards Australia; DFG = Deutsche Forschungsgemeinschaft; DOT = Department of Transportation; DSL = Domestic Substances List; EEC = European Economic Community; EINECS = European Inventory of Existing Commercial Chemical Substances; ELINCS = European List of Notified Chemical Substances; EU = European Union; HMIS = Hazardous Materials Identification System; IARC = International Agency for Research on Cancer; IMO = International Maritime Organization; IATA = International Air Transport Association; MAK = Maximum Concentration Value in the Workplace; NDSL = Non-Domestic Substances List; NFPA = National Fire Protection Association; NOHSC = National Occupational Health & Safety Commission; NTP = National Toxicology Program; STEL = Short-term Exposure Limit; TDG = Transportation of Dangerous Goods; TLV = Threshold Limit Value; TSCA = Toxic Substances Control Act; TWA = Time Weighted Average

## Literature References

None

## Other Information

Information presented herein has been compiled from sources considered to be dependable, and is accurate and reliable to the best of our knowledge and belief, but is not guaranteed to be so. Since conditions of use are beyond our control, we make no warranties, expressed or implied, except those that may be contained in our written contract of sale or acknowledgment.

Vendor assumes no responsibility for injury to vendee or third persons proximately caused by the material if reasonable safety procedures are not adhered to as stipulated in the data sheet. Additionally, vendor assumes no responsibility for injury to vendee or third persons proximately caused by abnormal use of the material, even if reasonable safety procedures are followed. Furthermore, vendee assumes the risk in their use of the material.

End of Sheet

Hourly and Annual Potential Emissions for the Kohler 50REOZJC model generator

Criteria Pollutant	Max. Fuel Consumption (1000 gal./hr)	Emission Factor (lbs/1000 gal.)	Federal Enforcement Limit (hrs/yr)	Conversion factor (tons/lb)	Hourly PTE (lbs/hr.)	Yearly PTE (tons/yr.)	Est. runtime (hrs/yr.)	Estimated Annual Emissions (tons/yr.)
PM & PM2.5 & 10	0.0043	42.5	500	0.0005	0.18275	0.046	26	0.002
SOx	0.0043	39.7	500	0.0005	0.17071	0.043	26	0.002
VOC	0.0043	49.3	500	0.0005	0.21199	0.053	26	0.003
NOx	0.0043	604	500	0.0005	2.5972	0.649	26	0.034
CO	0.0043	130	500	0.0005	0.559	0.140	26	0.007

Maximum fuel consumption from the generator specification sheet (see attached specification sheet)

Emission factors from AP-42/Webfire using SCC 20200102

Estimated runtime is approximately 1/2 per week for exercising

PTE (tons/yr) = max. fuel consumption (1000 gal./hr) x emission factor (lbs/1000 gal.) x 500 hrs./yr. x 0.0005 tons/lb.

Hourly Emissions (lbs/hr.) = fuel consumption (1000 gal./hr) x emission factor (lbs/1000 gal.)