

SWN PRODUCTION COMPANY, LLC

JOHN HUPP PAD

GENERAL PERMIT G70-D APPLICATION

**SUBMITTED TO WVDEP DIVISION OF AIR QUALITY
JUNE 2017**

TABLE OF CONTENTS

TABLE OF CONTENTS.....	i
INTRODUCTION.....	1
Proposed Emissions	1
Regulatory Discussion	2
APPLICATION FOR GENERAL PERMIT REGISTRATION.....	6
ATTACHMENT A: SINGLE SOURCE DETERMINATION	9
ATTACHMENT C: BUSINESS REGISTRATION CERTIFICATE.....	12
ATTACHMENT D: PROCESS FLOW DIAGRAM	14
ATTACHMENT E: PROCESS DESCRIPTION	16
ATTACHMENT F: PLOT PLAN.....	17
ATTACHMENT G: AREA MAPS	19
ATTACHMENT H: G70-D SECTION APPLICABILITY FORM	22
ATTACHMENT I: EMISSIONS UNITS/ERD TABLE.....	24
ATTACHMENT J: FUGITIVE EMISSIONS SUMMARY SHEET	26
ATTACHMENT K: GAS WELL AFFECTED FACILITY DATA SHEET	30
ATTACHMENT L: STORAGE VESSELS DATA SHEET	32
ATTACHMENT M: NATURAL GAS FIRED FUEL BURNING UNITS DATA SHEET	42
ATTACHMENT N: INTERNAL COMBUSTION ENGINE DATA SHEETS	47
ATTACHMENT O: TANKER TRUCK LOADING DATA SHEET.....	56
ATTACHMENT Q: PNEUMATIC CONTROLLERS DATA SHEET	60
ATTACHMENT R: PNEUMATIC PUMP DATA SHEET.....	62
ATTACHMENT S: AIR POLLUTION CONTROL DEVICE/EMISSION REDUCTION DEVICES SHEETS.....	64

ATTACHMENT T: EMISSIONS CALCULATIONS.....	69
ATTACHMENT U: FACILITY-WIDE EMISSION SUMMARY SHEETS	108
ATTACHMENT V: LEGAL ADVERTISEMENT	111

INTRODUCTION

SWN Production Company, LLC (SWN), operates the John Hupp Pad under Permit No. R13-2980C, issued on March 18, 2014. With this application, SWN requests authorization to add two 145-hp Caterpillar G3306 NA compressor engines, two stabilizer heaters, four GPU burners, two condensate tanks, and two produced water tanks and to remove one Kubota DG972-E2 compressor engine, one line heater, and one heater treater. Tank throughputs and compositions have also been updated and fugitive emissions have been revised to include five sand separators. As a result of these changes, truck loading, vapor combustor, fugitive, and haulroad emissions have also been updated. SWN also requests to operate under the General Permit G70-D for Oil and Natural Gas Production Facilities. Equipment to be authorized includes the following:

- Two (2) Caterpillar G3306 NA Compressor Engines
- Five (5) 1.0-mmBtu/hr Gas Production Units
- Two (2) 1.5-mmBtu/hr Stabilizer Heaters
- Five (5) 400-bbl Condensate Tanks
- Five (5) 400-bbl Produced Water Tanks
- Condensate Truck Loading
- Produced Water Truck Loading
- One (1) 30.0-mmBtu/hr Vapor Combustor with Pilots
- Fugitive Emissions
- Fugitive Haul Road Emissions

Note that other small storage tanks may be present on site (i.e., methanol, lube oil) but are considered de minimis sources per Table 45-13B and are listed on the application form.

Proposed Emissions

Emissions calculations for the facility are presented in Attachment T. A fuel heating value of 905 Btu/scf was used to calculate emissions from natural gas-fired equipment. Actual heating value may vary (generally 905 - 1,300) but using a lower heating value in the emissions calculations provides a more conservative (higher) estimate of fuel use.

Emissions from the Caterpillar engines were calculated with manufacturer data when available and AP-42/EPA emissions factors for the remaining pollutants.

Condensate and produced water tank emissions were calculated using ProMax process simulation software. Tank emissions are routed to a vapor combustor with 100% capture

efficiency and 98% destruction efficiency. Loading emissions were calculated using ProMax process simulation software and AP-42 calculations. Loading emissions are routed to a vapor combustor with 70% capture efficiency and 98% destruction efficiency.

Fugitive emissions were calculated with a component count by equipment type from a similar facility, and representative extended gas and liquids analyses. Fugitive haul road emissions were calculated using EPA/AP-42 methodologies.

Greenhouse gas emissions were calculated with the latest EPA factors and manufacturer data when available. Documents used as references for the emissions calculations, including AP-42 and EPA emission factor references, gas and liquids analyses, and process simulation results are attached.

Regulatory Discussion

STATE

45 CSR 13 - PERMITS FOR CONSTRUCTION, MODIFICATION, RELOCATION AND OPERATION OF STATIONARY SOURCES OF AIR POLLUTANTS, NOTIFICATION REQUIREMENTS, ADMINISTRATIVE UPDATES, TEMPORARY PERMITS, GENERAL PERMITS, AND PROCEDURES FOR EVALUATION:

The facility requests to operate under the General Permit G70-D. Emissions of carbon monoxide and volatile organic compounds are less than 80 tons per year (TPY). Oxides of nitrogen emissions are less than 50 TPY and particulate matter 10/2.5 and sulfur dioxide emissions are each less than 20 TPY. Also, the facility will have less than 8 TPY for each hazardous air pollutant and less than 20 tons for total hazardous air pollutants.

45 CSR 22 - AIR QUALITY MANAGEMENT FEE PROGRAM:

The facility will be required to maintain a valid Certificate to Operate on the premises.

45 CSR 30 - REQUIREMENTS FOR OPERATING PERMITS:

Emissions from the facility do not exceed major source thresholds; therefore, this rule does not apply.

FEDERAL

40 CFR PART 60 SUBPART KB—STANDARDS OF PERFORMANCE FOR VOLATILE ORGANIC LIQUID STORAGE VESSELS (INCLUDING PETROLEUM LIQUID STORAGE VESSELS) FOR WHICH CONSTRUCTION, RECONSTRUCTION, OR MODIFICATION COMMENCED AFTER JULY 23, 1984

The affected facility to which this Subpart applies is each storage vessel with a capacity greater than or equal to 75 cubic meters (m³) that is used to store volatile organic liquids (VOL) for which construction, reconstruction, or modification is commenced after July 23, 1984. The tanks at this facility were constructed after the effective date of this Subpart but are less than 75 m³ (which equals approximately 471 bbl); therefore, this Subpart does not apply.

40 CFR PART 60 SUBPART KKK - STANDARDS OF PERFORMANCE FOR STATIONARY FOR EQUIPMENT LEAKS OF VOC FROM ONSHORE NATURAL GAS PROCESSING PLANTS:

The facility is not considered an affected source (natural gas processing plant) and is therefore not subject to this Subpart.

40 CFR PART 60 SUBPART IIII - STANDARDS OF PERFORMANCE FOR STATIONARY COMPRESSION IGNITION INTERNAL COMBUSTION ENGINES:

The facility does not contain the affected source (diesel-fired engine) and is therefore not subject to this Subpart.

40 CFR PART 60 SUBPART JJJJ - STANDARDS OF PERFORMANCE FOR STATIONARY SPARK IGNITION INTERNAL COMBUSTION ENGINES:

The proposed 145-hp, four-stroke, rich-burn natural gas-fired flash gas compressor engines are assumed to have been constructed after the June 12, 2006 effective date and manufactured after July 1, 2008; therefore, they will be subject to this Subpart. Although final selection of the engines have not yet been made, it is presumed that the engines were manufactured after January 1, 2011 and therefore subject to Stage 2 emission limitations under this Subpart. SWN will comply with all applicable requirements.

40 CFR PART 60 SUBPART OOOO - STANDARDS OF PERFORMANCE FOR CRUDE OIL AND NATURAL GAS PRODUCTION, TRANSMISSION, AND DISTRIBUTION:

The emission sources affected by this Subpart include well completions, pneumatic controllers, equipment leaks from natural gas processing plants, sweetening units at natural gas processing plants, reciprocating compressors, centrifugal compressors and storage vessels which are constructed, modified or reconstructed after August 23, 2011 and before September 18, 2015.

The existing well at this location was completed during the effective date of this Subpart and is subject to the compliance requirements. There is no centrifugal compressor using wet gas seals at this facility. The pneumatic controllers utilized at the facility are considered low-bleed and are not subject to this Subpart. The storage vessel venting is controlled to less than six (6) TPY VOC

and federally enforceable limits are requested; therefore, the storage vessels are not subject to this Subpart.

40 CFR PART 60 SUBPART OOOOA - STANDARDS OF PERFORMANCE FOR CRUDE OIL AND NATURAL GAS FACILITIES FOR WHICH CONSTRUCTION, MODIFICATION, OR RECONSTRUCTION COMMENCED AFTER SEPTEMBER 18, 2015:

The emission sources affected by this Subpart include well completions, centrifugal compressors, reciprocating compressors, pneumatic controllers, storage vessels, fugitive sources at well sites, fugitive sources at compressor stations, pneumatic pumps, equipment leaks from natural gas processing plants and sweetening units at natural gas processing plants which are constructed, modified or reconstructed after September 18, 2015.

The proposed wells at this location will be completed after the effective date of this Subpart and will be subject to the compliance requirements. There is no centrifugal compressor using wet gas seals at this facility. The pneumatic controllers utilized at the facility are considered low-bleed and are not subject to this Subpart. The storage vessels were constructed before the effective date of this Subpart and are not subject to this Subpart.

40 CFR PART 63 SUBPART HH - NATIONAL EMISSION STANDARDS FOR HAZARDOUS AIR POLLUTANTS FOR SOURCE CATEGORIES FROM OIL AND NATURAL GAS PRODUCTION FACILITIES:

The site is a minor (area) source of hazardous air pollutants. This Subpart applies to affected emission points that are located at facilities that are major and area sources of HAP, and either process, upgrade, or store hydrocarbon liquids prior to custody transfer or that process, upgrade, or store natural gas prior to entering the natural gas transmission and storage source category. For purposes of this Subpart natural gas enters the natural gas transmission and storage source category after the natural gas processing plant, if present. The facility is a minor (area) source of HAP; however, there is no triethylene glycol (TEG) dehydration unit present at the facility and therefore this Subpart does not apply.

40 CFR PART 63 SUBPART HHH - NATIONAL EMISSION STANDARDS FOR HAZARDOUS AIR POLLUTANTS FOR SOURCE CATEGORIES FROM NATURAL TRANSMISSION AND STORAGE FACILITIES:

The facility is not a natural gas transmission and storage facility and is therefore not subject to this Subpart.

40 CFR PART 63 SUBPART ZZZZ - NATIONAL EMISSION STANDARDS FOR HAZARDOUS AIR POLLUTANTS FOR SOURCE CATEGORIES FROM STATIONARY RECIPROCATING INTERNAL COMBUSTION ENGINES - AREA SOURCE:

The original rule, published on February 26, 2004, initially affected new (constructed or reconstructed after December 19, 2002) reciprocating internal combustion engines (RICE) with a site-rating greater than 500 brake horsepower (HP) located at a major source of HAP emissions. On January 18, 2008, EPA published an amendment that promulgated standards for RICE constructed or reconstructed after June 12, 2006 with a site rating less than or equal to 500 HP located at major sources, and for engines constructed and reconstructed after June 12, 2006 located at area sources. On August 10, 2010, EPA published another amendment that promulgated standards for existing (constructed or reconstructed before June 12, 2006) RICE at area sources and existing RICE (constructed or reconstructed before June 12, 2006) with a site rating of less than or equal to 500 HP at major sources.

Owners and operators of new or reconstructed engines at area sources must meet the requirements of Subpart ZZZZ by complying with either 40 CFR Part 60 Subpart IIII (for CI engines) or 40 CFR Part 60 Subpart JJJJ (for SI engines). Based on emission calculations, this facility is a minor source of HAP. The 145-hp, four-stroke, rich-burn natural gas-fired flash gas compressor engines are considered new engines manufactured after January 1, 2011 and will meet the requirements of this Subpart by complying with requirements under NSPS Subpart JJJJ.

SWN Production Company, LLC

John Hupp Pad

June 2017

APPLICATION FOR GENERAL PERMIT REGISTRATION



west virginia department of environmental protection

Division of Air Quality
601 57th Street SE
Charleston, WV 25 4
Phone (304) 926-0475
Fax (304) 926-0479
www.dep.wv.gov

G70-D GENERAL PERMIT REGISTRATION APPLICATION

PREVENTION AND CONTROL OF AIR POLLUTION IN REGARD TO THE CONSTRUCTION, MODIFICATION,
RELOCATION, ADMINISTRATIVE UPDATE AND OPERATION OF
NATURAL GAS PRODUCTION FACILITIES LOCATED AT THE WELL SITE

- CONSTRUCTION CLASS I ADMINISTRATIVE UPDATE
MODIFICATION CLASS II ADMINISTRATIVE UPDATE
RELOCATION

SECTION 1. GENERAL INFORMATION

Name of Applicant (as registered with the WV Secretary of State's Office): SWN Production Company, LLC

Federal Employer ID No. (FEIN): 26-4388727

Applicant's Mailing Address: 10000 Energy Drive

City: Spring

State: TX

ZIP Code: 77389

Facility Name: John Hupp Pad

Operating Site Physical Address: 1909 Locust Grove Road
If none available, list road, city or town and zip of facility.

City: Bethany

Zip Code: 26032

County: Brooke

Latitude & Longitude Coordinates (NAD83, Decimal Degrees to 5 digits):

Latitude: 40.177627

Longitude: -80.570409

SIC Code: 1311

DAQ Facility ID No. (For existing facilities)

009-00099

NAICS Code: 211111

CERTIFICATION OF INFORMATION

This G70-D General Permit Registration Application shall be signed below by a Responsible Official. A Responsible Official is a President, Vice President, Secretary, Treasurer, General Partner, General Manager, a member of the Board of Directors, or Owner, depending on business structure. A business may certify an Authorized Representative who shall have authority to bind the Corporation, Partnership, Limited Liability Company, Association, Joint Venture or Sole Proprietorship. Required records of daily throughput, hours of operation and maintenance, general correspondence, compliance certifications and all required notifications must be signed by a Responsible Official or an Authorized Representative. If a business wishes to certify an Authorized Representative, the official agreement below shall be checked off and the appropriate names and signatures entered. Any administratively incomplete or improperly signed or unsigned G70-D Registration Application will be returned to the applicant. Furthermore, if the G70-D forms are not utilized, the application will be returned to the applicant. No substitution of forms is allowed.

I hereby certify that Carla Suszkowski is an Authorized Representative and in that capacity shall represent the interest of the business (e.g., Corporation, Partnership, Limited Liability Company, Association Joint Venture or Sole Proprietorship) and may obligate and legally bind the business. If the business changes its Authorized Representative, a Responsible Official shall notify the Director of the Division of Air Quality immediately.

I hereby certify that all information contained in this G70-D General Permit Registration Application and any supporting documents appended hereto is, to the best of my knowledge, true, accurate and complete, and that all reasonable efforts have been made to provide the most comprehensive information possible.

Responsible Official Signature:

Carla Suszkowski

Name and Title: Carla Suszkowski

Phone: 832-796-1000

Fax: 405-849-3102

Email: Carla_Suszkowski@SWN.com

Date: 6-20-2017

If applicable:

Authorized Representative Signature:

Name and Title:

Phone:

Fax:

Email:

Date:

If applicable:

Environmental Contact

Name and Title: Clay Murrel

Phone: 304-884-1715

Fax:

Email: Clay_Murrel@SWN.com

Date:

OPERATING SITE INFORMATION

Briefly describe the proposed new operation and/or any change(s) to the facility: This application includes two (2) Caterpillar G3306 NA engines (EU-ENG1 – EU-ENG2), five (5) 1.0-mmBtu/hr natural gas-fired gas production units (GPU) burners (EU-GPU1 – EU-GPU5), two (2) 1.5-mmBtu/hr natural gas-fired stabilizer heaters (EU-SH1 – EU-SH2), five (5) 400-bbl condensate tanks (EU-TANKS-COND), five (5) 400-bbl produced water tanks (EU-TANKS-PW), condensate and produced water truck loading (EU-LOAD-COND and EU-LOAD-PW), one (1) 30.0-mmBtu/hr vapor combustor (APC-COMB) with three (3) 50-SCFH pilots (EU-PILOTS), fugitive emissions (EU-FUG), and fugitive haul road emissions (EU-HR).

Directions to the facility: From I-70 turn right on US Rt. 40 east and travel 4.4 miles to the Rt. 40 staging area. From Rt. 40 staging turn left on US Rt. 40 east and travel 3.3 miles to intersection of US 40 east and CR-45, (Atkinson Crossing), and turn left on CR-45. Travel 1.1 mile on CR-45 to intersection of CR-45 and CR-47, (Potomac Ridge Rd), and turn left on CR-45. Travel 0.8 miles on CR-45 to intersection of CR-45 and CR-37, (GC&P Rd), and stay straight through on CR-37. Travel 1.8 miles to intersection of CR-37 and CR-7/3, (Harvey Rd), and turn right on CR-7/3. Travel CR-7/3 for 0.3 miles to intersection of CR-7/3 and CR-55, (again Harvey Rd), and turn right on CR-55. Travel CR-55 for 1.9 miles to intersection of CR-55 and SR-88 and turn right on SR-88 North. Travel SR-88 0.8 miles to intersection of SR-88 and CR-11/1 and turn right on CR- 11/1. Travel CR 11/1 for 0.6 miles to access road on right.

ATTACHMENTS AND SUPPORTING DOCUMENTS

I have enclosed the following required documents:

Check payable to WVDEP – Division of Air Quality with the appropriate application fee (per 45CSR13 and 45CSR22).

- Check attached to front of application.
- I wish to pay by electronic transfer. Contact for payment (incl. name and email address):
- I wish to pay by credit card. Contact for payment (incl. name and email address):

- \$500 (Construction, Modification, and Relocation) \$300 (Class II Administrative Update)
- \$1,000 NSPS fee for 40 CFR60, Subpart IIII, JJJJ, OOOO and/or OOOOa ¹
- \$2,500 NESHAP fee for 40 CFR63, Subpart ZZZZ and/or HH ²

¹ Only one NSPS fee will apply.
² Only one NESHAP fee will apply. The Subpart ZZZZ NESHAP fee will be waived for new engines that satisfy requirements by complying with NSPS, Subparts IIII and/or JJJJ.
NSPS and NESHAP fees apply to new construction or if the source is being modified.

- Responsible Official or Authorized Representative Signature (if applicable)
- Single Source Determination Form (**must be completed**) – Attachment A
- Siting Criteria Waiver (if applicable) – Attachment B Current Business Certificate – Attachment C
- Process Flow Diagram – Attachment D Process Description – Attachment E
- Plot Plan – Attachment F Area Map – Attachment G
- G70-D Section Applicability Form – Attachment H Emission Units/ERD Table – Attachment I
- Fugitive Emissions Summary Sheet – Attachment J
- Gas Well Affected Facility Data Sheet (if applicable) – Attachment K
- Storage Vessel(s) Data Sheet (include gas sample data, USEPA Tanks, simulation software (e.g. ProMax, E&P Tanks, HYSYS, etc.), etc. where applicable) – Attachment L
- Natural Gas Fired Fuel Burning Unit(s) Data Sheet (GPUs, Heater Treaters, In-Line Heaters if applicable) – Attachment M
- Internal Combustion Engine Data Sheet(s) (include manufacturer performance data sheet(s) if applicable) – Attachment N
- Tanker Truck/Rail Car Loading Data Sheet (if applicable) – Attachment O
- Glycol Dehydration Unit Data Sheet(s) (include wet gas analysis, GRI- GLYCalc™ input and output reports and information on reboiler if applicable) – Attachment P
- Pneumatic Controllers Data Sheet – Attachment Q
- Pneumatic Pump Data Sheet – Attachment R
- Air Pollution Control Device/Emission Reduction Device(s) Sheet(s) (include manufacturer performance data sheet(s) if applicable) – Attachment S
- Emission Calculations (please be specific and include all calculation methodologies used) – Attachment T
- Facility-wide Emission Summary Sheet(s) – Attachment U
- Class I Legal Advertisement – Attachment V
- One (1) paper copy and two (2) copies of CD or DVD with pdf copy of application and attachments

All attachments must be identified by name, divided into sections, and submitted in order.

ATTACHMENT A: SINGLE SOURCE DETERMINATION

ATTACHMENT A - SINGLE SOURCE DETERMINATION FORM

Classifying multiple facilities as one “stationary source” under 45CSR13, 45CSR14, and 45CSR19 is based on the definition of Building, structure, facility, or installation as given in §45-14-2.13 and §45-19-2.12. The definition states:

“Building, Structure, Facility, or Installation” means all of the pollutant-emitting activities which belong to the same industrial grouping, are located on one or more contiguous or adjacent properties, and are under the control of the same person (or persons under common control). Pollutant-emitting activities are a part of the same industrial grouping if they belong to the same “Major Group” (i.e., which have the same two (2)-digit code) as described in the Standard Industrial Classification Manual, 1987 (United States Government Printing Office stock number GPO 1987 0-185-718:QL 3).

The Source Determination Rule for the oil and gas industry was published in the Federal Register on June 3, 2016 and will become effective on August 2, 2016. EPA defined the term “adjacent” and stated that equipment and activities in the oil and gas sector that are under common control will be considered part of the same source if they are located on the same site or on sites that share equipment and are within ¼ mile of each other.

Is there equipment and activities in the same industrial grouping (defined by SIC code)?

Yes No

Is there equipment and activities under the control of the same person/people?

Yes No

Is there equipment and activities located on the same site or on sites that share equipment and are within ¼ mile of each other?

Yes No

Proximity Map



John Hupp Pad
Lease Road: 620 Feet
NAD83 UTM Zone 17N
536.698 4,447.438 Kilometers
-80.570409 40.177627 Decimal Degrees

- | | |
|------------------------|---------------------|
| Schools | Compressor Stations |
| Residential Structures | Processing Plant |
| Rivers and Lakes | Power Plant |
| Hupp_300Ft | Hospital |
| Hupp_Quarter_Mile | |

ATTACHMENT C: BUSINESS REGISTRATION CERTIFICATE

**WEST VIRGINIA
STATE TAX DEPARTMENT
BUSINESS REGISTRATION
CERTIFICATE**

ISSUED TO:
**SWN PRODUCTION COMPANY, LLC
5400D BIG TYLER RD
CHARLESTON, WV 25313-1103**

BUSINESS REGISTRATION ACCOUNT NUMBER: **2307-3731**

This certificate is issued on: **12/8/2014**

This certificate is issued by: **[Signature]**
the West Virginia State Tax Commissioner,
in accordance with Chapter 11, Article 12, of the West Virginia Code.

The person or organization identified on this certificate is registered
to conduct business in the State of West Virginia at the location above.

This certificate is not transferrable and must be displayed at the location for which issued.

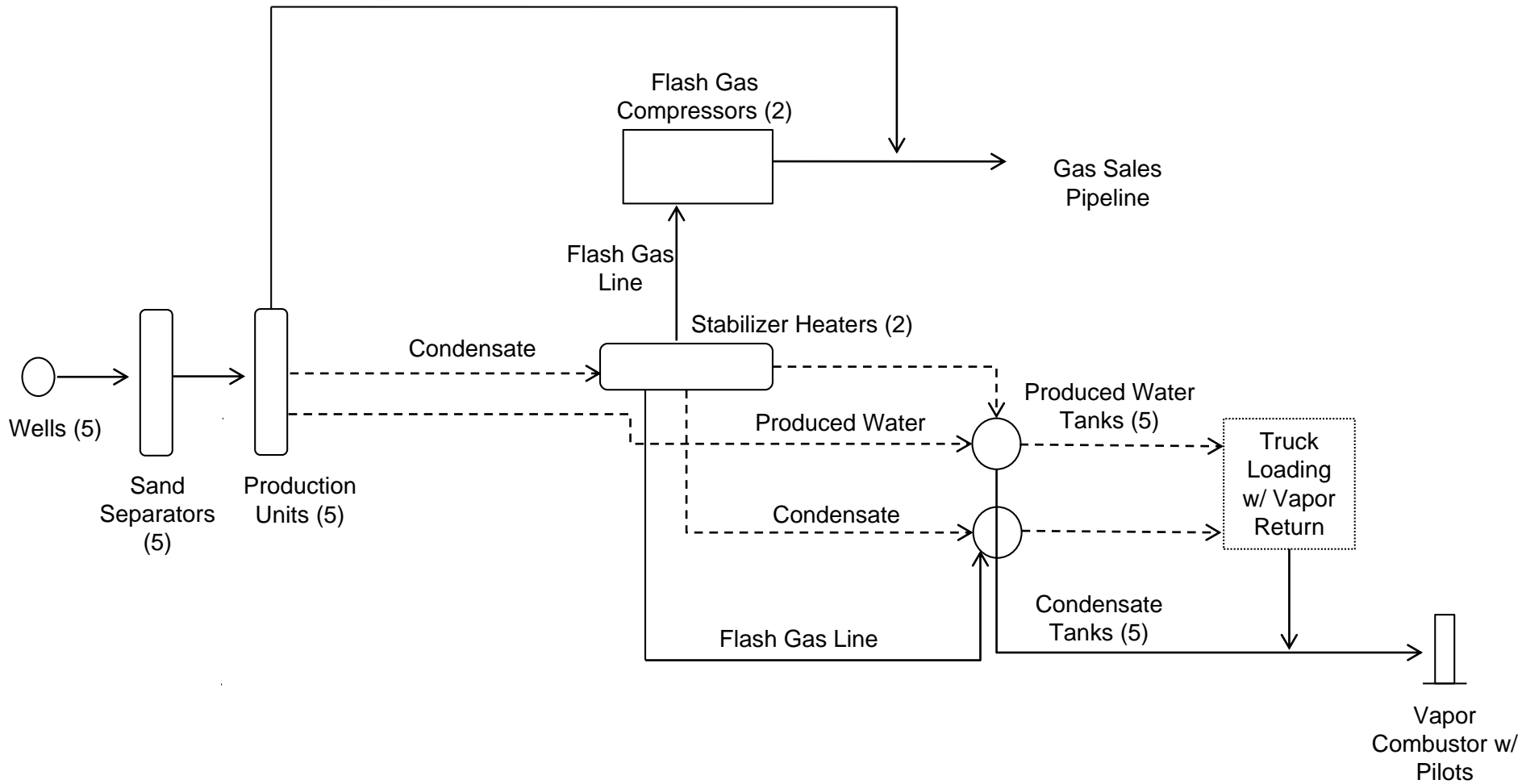
This certificate shall be permanent until cessation of the business for which the certificate of registration
was granted, or until it is suspended, revoked or cancelled by the Tax Commissioner.

Change in name or change of location shall be considered a cessation of the business and a new
certificate shall be required.

TRAVELING/STREET VENDORS: Must carry a copy of this certificate in every vehicle operated by them.
CONTRACTORS, DRILLING OPERATORS, TIMBER/LOGGING OPERATIONS: Must have a copy of
this certificate displayed at every job site within West Virginia.

atL006 v.4
L1180094016

ATTACHMENT D: PROCESS FLOW DIAGRAM



————— Gas/Vapor
 - - - - - Liquids (Condensate and Produced Water)

SWN Production Company, LLC
John Hupp Pad
 Attachment D: Process Flow Diagram
 June 2017

Note: Drawing is a depiction of general facility process and is not intended to represent facility and/or equipment layout.

ATTACHMENT E: PROCESS DESCRIPTION

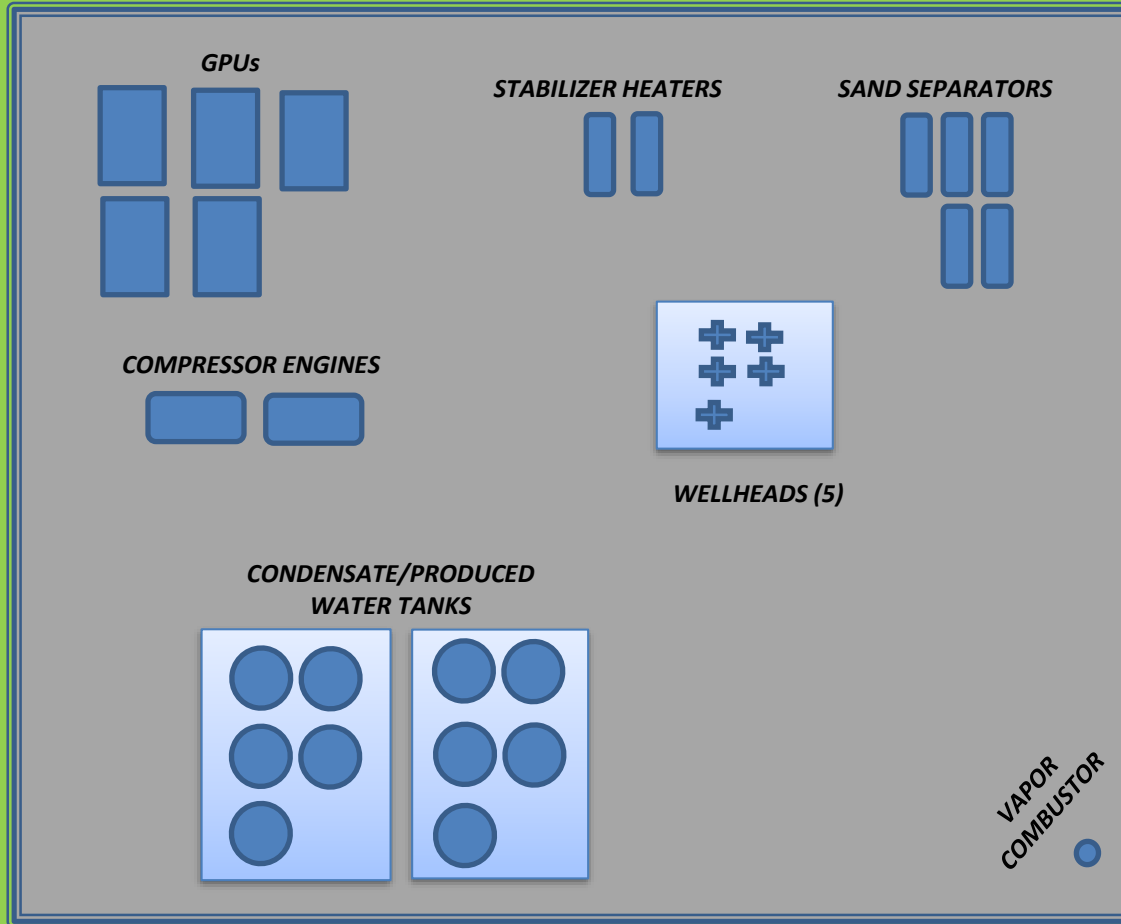
The facility is an oil and natural gas exploration and production facility, responsible for the production of condensate and natural gas. Storage of condensate and produced water also occurs on-site. A description of the facility process is as follows: Condensate, gas and water come from the wellheads through the sand separators then to the production units, where the first stage of separation occurs. Produced water is sent from the production units to the produced water tanks. Condensate and residual water are sent to the stabilizer heaters. The flash from the stabilizer heaters is captured via natural gas-fired engine-driven flash gas compressors. Condensate flows into the condensate storage tanks.

The natural gas stream exits the facility for transmission via pipeline. Condensate and produced water are transported offsite via truck. Loading emissions is controlled with vapor return, which has at least 70% capture efficiency, and is routed to the vapor combustor for at least 98% destruction efficiency. Working, breathing and flashing vapors from the condensate and produced water storage tanks are routed to the vapor combustor with 100% capture efficiency to be burned with at least 98% combustion efficiency. The vapor combustor has three (3) natural gas-fired pilots to ensure a constant flame for combustion.

A process flow diagram reflecting facility operations is shown in Attachment D.

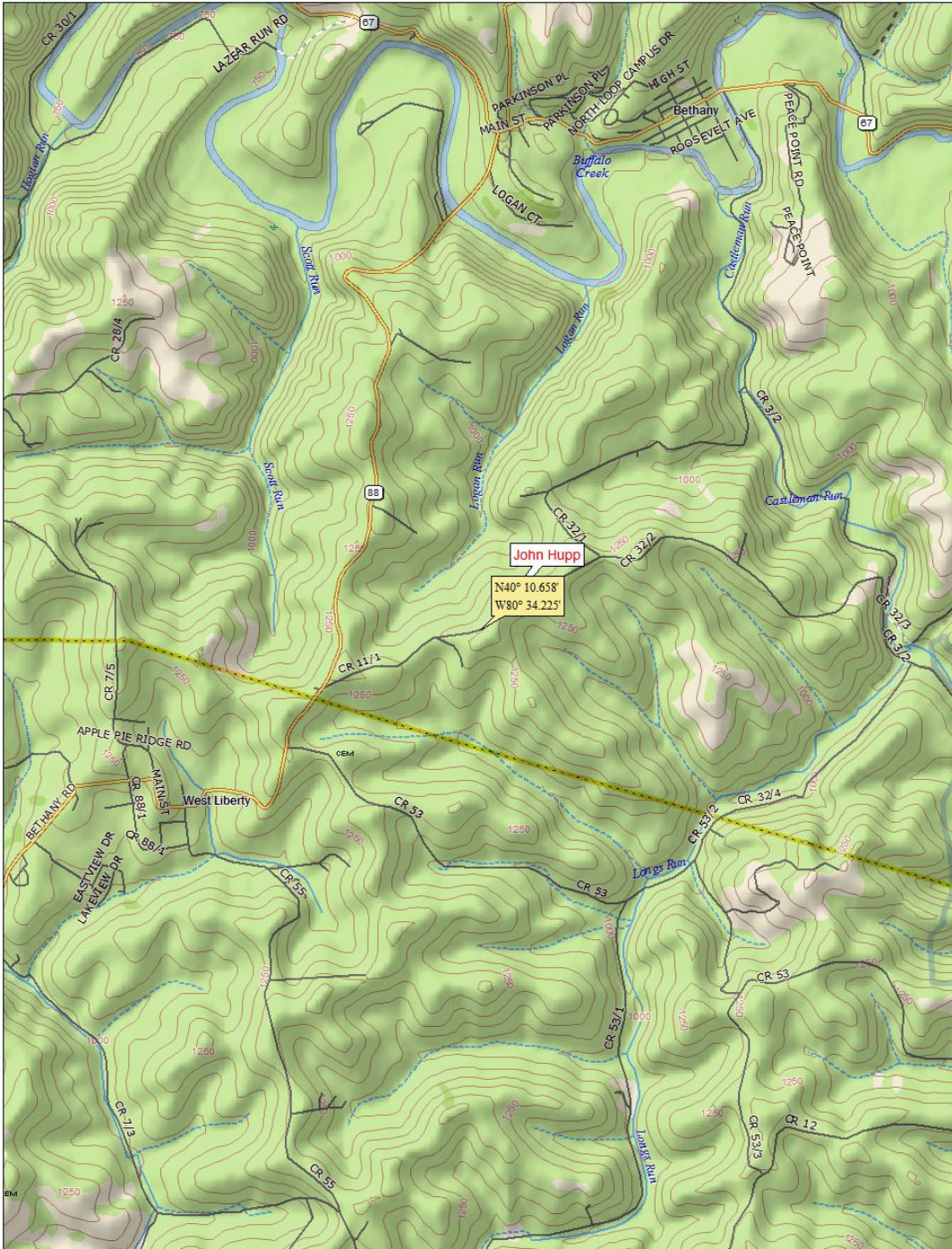
ATTACHMENT F: PLOT PLAN

Please note that the simple plot plan provided is only a representation of production/emissions equipment to be installed. Actual location specifications and equipment placement are not to scale.

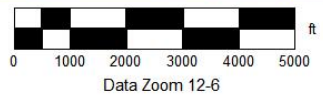
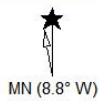


NOTE: Image is only a representation of production/emissions equipment. Actual location specifications and equipment placement are not to scale.

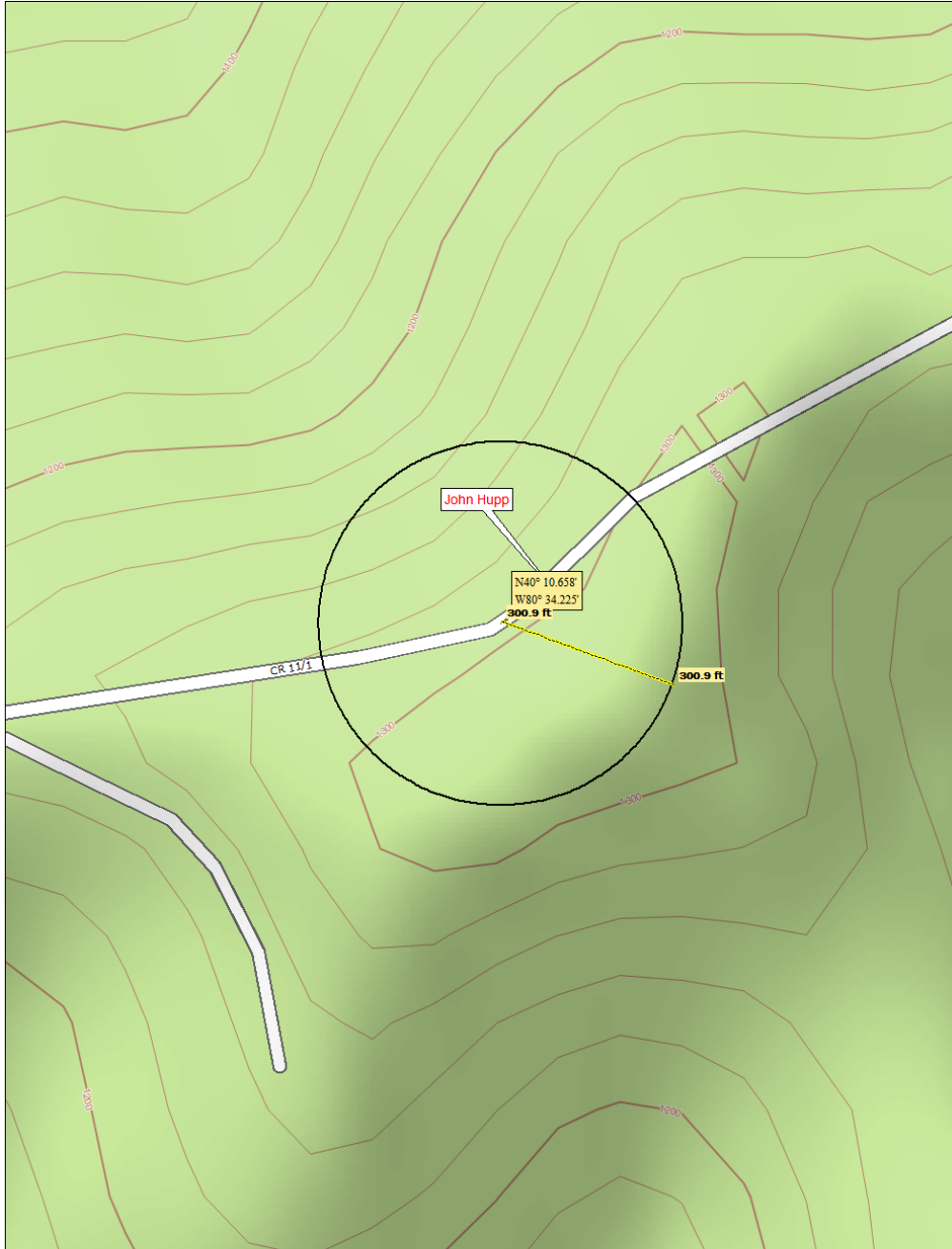
ATTACHMENT G: AREA MAPS



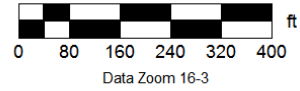
Data use subject to license.
 © DeLorme. XMap® 7.
 www.delorme.com



SWN Production Company, LLC
John Hupp Pad
 Attachment G: Area Map
 June 2017



Data use subject to license.
© DeLorme. XMap® 7.
www.delorme.com



SWN Production Company, LLC
John Hupp Pad
Attachment G: Area Map with 300' Radius
June 2017

ATTACHMENT H: G70-D SECTION APPLICABILITY FORM

ATTACHMENT H – G70-D SECTION APPLICABILITY FORM

**General Permit G70-D Registration
Section Applicability Form**

General Permit G70-D was developed to allow qualified applicants to seek registration for a variety of sources. These sources include gas well affected facilities, storage vessels, gas production units, in-line heaters, heater treaters, glycol dehydration units and associated reboilers, pneumatic controllers, pneumatic pumps, reciprocating internal combustion engines (RICEs), tank truck/rail car loading, fugitive emissions, completion combustion devices, flares, enclosed combustion devices, and vapor recovery systems. All registered facilities will be subject to Sections 1.0, 2.0, 3.0, and 4.0.

General Permit G70-D allows the registrant to choose which sections of the permit they are seeking registration under. Therefore, please mark which additional sections that you are applying for registration under. If the applicant is seeking registration under multiple sections, please select all that apply. Please keep in mind, that if this registration is approved, the issued registration will state which sections will apply to your affected facility.

GENERAL PERMIT G70-D APPLICABLE SECTIONS	
<input checked="" type="checkbox"/> Section 5.0	Gas and Oil Well Affected Facility (NSPS, Subpart OOOO/OOOOa)
<input checked="" type="checkbox"/> Section 6.0	Storage Vessels Containing Condensate and/or Produced Water ¹
<input type="checkbox"/> Section 7.0	Storage Vessel Affected Facility (NSPS, Subpart OOOO/OOOOa)
<input checked="" type="checkbox"/> Section 8.0	Control Devices and Emission Reduction Devices not subject to NSPS Subpart OOOO/OOOOa and/or NESHAP Subpart HH
<input checked="" type="checkbox"/> Section 9.0	Small Heaters and Reboilers not subject to 40CFR60 Subpart Dc
<input type="checkbox"/> Section 10.0	Pneumatic Controllers Affected Facility (NSPS, Subpart OOOO/OOOOa)
<input type="checkbox"/> Section 11.0	Pneumatic Pump Affected Facility (NSPS, Subpart OOOOa)
<input type="checkbox"/> Section 12.0	Fugitive Emissions GHG and VOC Standards (NSPS, Subpart OOOOa)
<input checked="" type="checkbox"/> Section 13.0	Reciprocating Internal Combustion Engines, Generator Engines
<input checked="" type="checkbox"/> Section 14.0	Tanker Truck/Rail Car Loading ²
<input type="checkbox"/> Section 15.0	Glycol Dehydration Units ³

- 1 Applicants that are subject to Section 6 may also be subject to Section 7 if the applicant is subject to the NSPS, Subparts OOOO or OOOOa control requirements or the applicable control device requirements of Section 8.
- 2 Applicants that are subject to Section 14 may also be subject to control device and emission reduction device requirements of Section 8.
- 3 Applicants that are subject to Section 15 may also be subject to the requirements of Section 9 (reboilers). Applicants that are subject to Section 15 may also be subject to control device and emission reduction device requirements of Section 8.

ATTACHMENT I: EMISSIONS UNITS/ERD TABLE

ATTACHMENT I - EMISSION UNITS/EMISSION REDUCTION DEVICES (ERD) TABLE

Include ALL emission units and air pollution control devices/ERDs that will be part of this permit application review. Do not include fugitive emission sources in this table. Deminimis storage tanks shall be listed in the Attachment L table. This information is required for all sources regardless of whether it is a construction, modification, or administrative update.

Emission Unit ID ¹	Emission Point ID ²	Emission Unit Description	Year Installed	Manufac. Date ³	Design Capacity	Type ⁴ and Date of Change	Control Device(s) ⁵	ERD(s) ⁶
EU-ENG1	EP-ENG1	145-hp Caterpillar G3306 NA Engine	TBD	after 1/1/2011	145-hp	New	NSCR	NSCR
EU-ENG2	EP-ENG2	145-hp Caterpillar G3306 NA Engine	TBD	after 1/1/2011	145-hp	New	NSCR	NSCR
EU-GPU1	EP-GPU1	1.0-mmBtu/hr GPU Burner	2012	N/A	1.0-mmBtu/hr	Existing	N/A	N/A
EU-GPU2	EP-GPU2	1.0-mmBtu/hr GPU Burner	TBD	N/A	1.0-mmBtu/hr	New	N/A	N/A
EU-GPU3	EP-GPU3	1.0-mmBtu/hr GPU Burner	TBD	N/A	1.0-mmBtu/hr	New	N/A	N/A
EU-GPU4	EP-GPU4	1.0-mmBtu/hr GPU Burner	TBD	N/A	1.0-mmBtu/hr	New	N/A	N/A
EU-GPU5	EP-GPU5	1.0-mmBtu/hr GPU Burner	TBD	N/A	1.0-mmBtu/hr	New	N/A	N/A
EU-SH1	EP-SH1	1.5-mmBtu/hr Stabilizer Heater	TBD	N/A	1.5-mmBtu/hr	New	N/A	N/A
EU-SH2	EP-SH2	1.5-mmBtu/hr Stabilizer Heater	TBD	N/A	1.5-mmBtu/hr	New	N/A	N/A
EU-TANKS-COND	APC-COMB	Five (5) 400-bbl Condensate Tanks Routed to Vapor Combustor	3 - 2012; 2 - TBD	N/A	400-bbl	Modification	APC-COMB	APC-COMB
EU-TANKS-PW	APC-COMB	Five (5) 400-bbl Produced Water Tanks Routed to Vapor Combustor	3 - 2012; 2 - TBD	N/A	400-bbl	Modification	APC-COMB	APC-COMB
EU-LOAD-COND	APC-COMB	Condensate Truck Loading w/ Vapor Return Routed to Combustor	2012	N/A	24,934,552 gal/yr	Modification	Vapor Return and APC-COMB	Vapor Return and APC-COMB
EU-LOAD-PW	APC-COMB	Produced Water Truck Loading w/ Vapor Return Routed to Combustor	2012	N/A	30,599,906 gal/yr	Modification	Vapor Return and APC-COMB	Vapor Return and APC-COMB
APC-COMB	APC-COMB	30.0-mmBtu/hr Vapor Combustor	2013	N/A	30.0-mmBtu/hr	Modification	N/A	N/A
EU-PILOTS	APC-COMB	Vapor Combustor Pilots	2013	N/A	150-scfh	Existing	N/A	N/A
EU-FUG	EP-FUG	Fugitive Emissions	2012	N/A	N/A	Modification	N/A	N/A
EU-HR	EP-HR	Fugitive Haul Road Emissions	2012	N/A	N/A	Modification	N/A	N/A

¹ For Emission Units (or Sources) use the following numbering system: 1S, 2S, 3S,... or other appropriate designation.

² For Emission Points use the following numbering system: 1E, 2E, 3E, ... or other appropriate designation.

³ When required by rule

⁴ New, modification, removal, existing

⁵ For Control Devices use the following numbering system: 1C, 2C, 3C,... or other appropriate designation.

⁶ For ERDs use the following numbering system: 1D, 2D, 3D,... or other appropriate designation.

ATTACHMENT J: FUGITIVE EMISSIONS SUMMARY SHEET

Fugitive emissions at this site consist of haul road emissions, condensate and produced water loading operations, and equipment leaks.

ATTACHMENT J – FUGITIVE EMISSIONS SUMMARY SHEET

Sources of fugitive emissions may include loading operations, equipment leaks, blowdown emissions, etc.
Use extra pages for each associated source or equipment if necessary.

Source/Equipment: EU-FUG

Leak Detection Method Used	<input type="checkbox"/> Audible, visual, and olfactory (AVO) inspections	<input type="checkbox"/> Infrared (FLIR) cameras	<input type="checkbox"/> Other (please describe)	<input checked="" type="checkbox"/> None required
----------------------------	---------------------------------------------------------------------------	--------------------------------------------------	--------------------------------------------------	---------------------------------------------------

Component Type	Closed Vent System	Count	Source of Leak Factors (EPA, other (specify))	Stream type (gas, liquid, etc.)	Estimated Emissions (tpy)		
					VOC	HAP	GHG (methane, CO _{2e})
Pumps	<input type="checkbox"/> Yes <input type="checkbox"/> No			<input type="checkbox"/> Gas <input type="checkbox"/> Liquid <input type="checkbox"/> Both			
Valves	<input type="checkbox"/> Yes <input checked="" type="checkbox"/> No	89 – gas 122 – LL	EPA	<input type="checkbox"/> Gas <input type="checkbox"/> Liquid <input checked="" type="checkbox"/> Both	0.93 – gas 2.81 – LL	0.01 – gas 0.20 – LL	49.27 – gas 0.80 – LL
Safety Relief Valves	<input type="checkbox"/> Yes <input checked="" type="checkbox"/> No	30	EPA	<input checked="" type="checkbox"/> Gas <input type="checkbox"/> Liquid <input type="checkbox"/> Both	0.61	0.01	32.48
Open Ended Lines	<input type="checkbox"/> Yes <input type="checkbox"/> No			<input type="checkbox"/> Gas <input type="checkbox"/> Liquid <input type="checkbox"/> Both			
Sampling Connections	<input type="checkbox"/> Yes <input type="checkbox"/> No			<input type="checkbox"/> Gas <input type="checkbox"/> Liquid <input type="checkbox"/> Both			
Connections (Not sampling)	<input type="checkbox"/> Yes <input checked="" type="checkbox"/> No	422	EPA	<input type="checkbox"/> Gas <input checked="" type="checkbox"/> Liquid <input type="checkbox"/> Both	0.82	0.06	0.23
Compressors	<input type="checkbox"/> Yes <input checked="" type="checkbox"/> No	6	EPA	<input checked="" type="checkbox"/> Gas <input type="checkbox"/> Liquid <input type="checkbox"/> Both	0.12	<0.01	6.50
Flanges	<input type="checkbox"/> Yes <input checked="" type="checkbox"/> No	361 – gas 30 – LL	EPA	<input type="checkbox"/> Gas <input type="checkbox"/> Liquid <input checked="" type="checkbox"/> Both	0.33 – gas 0.03 – LL	<0.01 – gas <0.01 – LL	17.32 – gas 0.01 – LL
Other ¹	<input type="checkbox"/> Yes <input type="checkbox"/> No			<input type="checkbox"/> Gas <input type="checkbox"/> Liquid <input type="checkbox"/> Both			

¹ Other equipment types may include compressor seals, relief valves, diaphragms, drains, meters, etc.

Please provide an explanation of the sources of fugitive emissions (e.g. pigging operations, equipment blowdowns, pneumatic controllers, etc.):
Equipment leaks

Please indicate if there are any closed vent bypasses (include component):

N/A

Specify all equipment used in the closed vent system (e.g. VRU, ERD, thief hatches, tanker truck/rail car loading, etc.)

N/A

TABLE 2-4. OIL AND GAS PRODUCTION OPERATIONS AVERAGE EMISSION FACTORS (kg/hr/source)

Equipment Type	Service ^a	Emission Factor (kg/hr/source) ^b
Valves	Gas	4.5E-03
	Heavy Oil	8.4E-06
	Light Oil	2.5E-03
	Water/Oil	9.8E-05
Pump seals	Gas	2.4E-03
	Heavy Oil	NA
	Light Oil	1.3E-02
	Water/Oil	2.4E-05
Others ^c	Gas	8.8E-03
	Heavy Oil	3.2E-05
	Light Oil	7.5E-03
	Water/Oil	1.4E-02
Connectors	Gas	2.0E-04
	Heavy Oil	7.5E-06
	Light Oil	2.1E-04
	Water/Oil	1.1E-04
Flanges	Gas	3.9E-04
	Heavy Oil	3.9E-07
	Light Oil	1.1E-04
	Water/Oil	2.9E-06
Open-ended lines	Gas	2.0E-03
	Heavy Oil	1.4E-04
	Light Oil	1.4E-03
	Water/Oil	2.5E-04

^aWater/Oil emission factors apply to water streams in oil service with a water content greater than 50%, from the point of origin to the point where the water content reaches 99%. For water streams with a water content greater than 99%, the emission rate is considered negligible.

^bThese factors are for total organic compound emission rates (including non-VOC's such as methane and ethane) and apply to light crude, heavy crude, gas plant, gas production, and off shore facilities. "NA" indicates that not enough data were available to develop the indicated emission factor.

^cThe "other" equipment type was derived from compressors, diaphragms, drains, dump arms, hatches, instruments, meters, pressure relief valves, polished rods, relief valves, and vents. This "other" equipment type should be applied for any equipment type other than connectors, flanges, open-ended lines, pumps, or valves.

ATTACHMENT K: GAS WELL AFFECTED FACILITY DATA SHEET

ATTACHMENT K – GAS WELL AFFECTED FACILITY DATA SHEET

Complete this data sheet if you are the owner or operator of a gas well affected facility for which construction, modification or reconstruction commenced after August 23, 2011. This form must be completed for natural gas well affected facilities regardless of when flowback operations occur (or have occurred).

API Number	Date of Flowback	Date of Well Completion	Green Completion and/or Combustion Device	Subject to OOOO or OOOOa?
047-009-000920 (1H)	3/19/2012	11/9/2011	Green Completion	OOOO
PLANNED	TBD	TBD	TBD	TBD
PLANNED	TBD	TBD	TBD	TBD
PLANNED	TBD	TBD	TBD	TBD
PLANNED	TBD	TBD	TBD	TBD

Note: If future wells are planned and no API number is available please list as PLANNED. If there are existing wells that commenced construction prior to August 23, 2011, please acknowledge as existing.

This is the same API (American Petroleum Institute) well number(s) provided in the well completion notification and as provided to the WVDEP, Office of Oil and Gas for the well permit. The API number may be provided on the application without the state code (047).

Every oil and gas well permitted in West Virginia since 1929 has been issued an API number. This API is used by agencies to identify and track oil and gas wells.

The API number has the following format: 047-001-00001

Where,

- 047 = State code. The state code for WV is 047.*
- 001 = County Code. County codes are odd numbers, beginning with 001 (Barbour) and continuing to 109 (Wyoming).*
- 00001= Well number. Each well will have a unique well number.*

ATTACHMENT L: STORAGE VESSELS DATA SHEET

REPRESENTATIVE GAS ANALYSES
PROMAX PROCESS SIMULATION RESULTS

ATTACHMENT L – STORAGE VESSEL DATA SHEET

Complete this data sheet if you are the owner or operator of a storage vessel that contains condensate and/or produced water. This form must be completed for *each* new or modified bulk liquid storage vessel(s) that contains condensate and/or produced water. (If you have more than one (1) identical tank (i.e. 4-400 bbl condensate tanks), then you can list all on one (1) data sheet). **Include gas sample analysis, flashing emissions, working and breathing losses, USEPA Tanks, simulation software (ProMax, E&P Tanks, HYSYS, etc.), and any other supporting documents where applicable.**

The following information is REQUIRED:

- Composition of the representative sample used for the simulation
- For each stream that contributes to flashing emissions:
 - Temperature and pressure (inlet and outlet from separator(s))
 - Simulation-predicted composition
 - Molecular weight
 - Flow rate
- Resulting flash emission factor or flashing emissions from simulation
- Working/breathing loss emissions from tanks and/or loading emissions if simulation is used to quantify those emissions

Additional information may be requested if necessary.

GENERAL INFORMATION (REQUIRED)

1. Bulk Storage Area Name Condensate Storage	2. Tank Name Five (5) 400-bbl Condensate Storage Tanks
3. Emission Unit ID number EU-TANKS-COND	4. Emission Point ID number APC-COMB
5. Date Installed, Modified or Relocated (<i>for existing tanks</i>) Three – 2012; Two - TBD Was the tank manufactured after August 23, 2011 and on or before September 18, 2015? <input checked="" type="checkbox"/> Yes <input type="checkbox"/> No Was the tank manufactured after September 18, 2015? <input checked="" type="checkbox"/> Yes <input type="checkbox"/> No	6. Type of change: <input type="checkbox"/> New construction <input type="checkbox"/> New stored material <input checked="" type="checkbox"/> Other <input type="checkbox"/> Relocation
7A. Description of Tank Modification (<i>if applicable</i>) Update quantity of tanks, composition, and throughput.	
7B. Will more than one material be stored in this tank? <i>If so, a separate form must be completed for each material.</i> <input type="checkbox"/> Yes <input checked="" type="checkbox"/> No	
7C. Was USEPA Tanks simulation software utilized? <input type="checkbox"/> Yes <input checked="" type="checkbox"/> No	
<p><i>If Yes, please provide the appropriate documentation and items 8-42 below are not required.</i></p>	

1. Bulk Storage Area Name Produced Water Storage	2. Tank Name Five (5) 400-bbl Produced Water Storage Tanks
3. Emission Unit ID number EU-TANKS-PW	4. Emission Point ID number APC-COMB
5. Date Installed, Modified or Relocated (<i>for existing tanks</i>) Three – 2012; Two - TBD Was the tank manufactured after August 23, 2011 and on or before September 18, 2015? <input checked="" type="checkbox"/> Yes <input type="checkbox"/> No Was the tank manufactured after September 18, 2015? <input checked="" type="checkbox"/> Yes <input type="checkbox"/> No	6. Type of change: <input type="checkbox"/> New construction <input type="checkbox"/> New stored material <input checked="" type="checkbox"/> Other <input type="checkbox"/> Relocation
7A. Description of Tank Modification (<i>if applicable</i>) Update quantity of tanks, composition, and throughput.	
7B. Will more than one material be stored in this tank? <i>If so, a separate form must be completed for each material.</i> <input type="checkbox"/> Yes <input checked="" type="checkbox"/> No	
7C. Was USEPA Tanks simulation software utilized? <input type="checkbox"/> Yes <input checked="" type="checkbox"/> No <i>If Yes, please provide the appropriate documentation and items 8-42 below are not required.</i>	

STORAGE TANK DATA TABLE

List all deminimis storage tanks (i.e. lube oil, glycol, diesel etc.)

Source ID # ¹	Status ²	Content ³	Volume ⁴
EU-TANKS-LUBE OIL	NEW	Lube Oil	50 gal
EU-TANKS-LUBE OIL	NEW	Lube Oil	50 gal
EU-TANKS-METHANOL	NEW	Methanol	50 gal
EU-TANKS-METHANOL	NEW	Methanol	50 gal
EU-TANKS-METHANOL	EXIST	Methanol	50 gal
EU-TANKS-METHANOL	NEW	Methanol	50 gal
EU-TANKS-METHANOL	NEW	Methanol	50 gal
EU-TANKS-METHANOL	NEW	Methanol	50 gal
EU-TANKS-METHANOL	NEW	Methanol	50 gal

1. Enter the appropriate Source Identification Numbers (Source ID #) for each storage tank located at the well site. Tanks should be designated T01, T02, T03, etc.
2. Enter storage tank Status using the following:
 EXIST Existing Equipment
 NEW Installation of New Equipment
 REM Equipment Removed
3. Enter storage tank content such as condensate, pipeline liquids, glycol (DEG or TEG), lube oil, diesel, mercaptan etc.
4. Enter the maximum design storage tank volume in gallons.

TABLE 1-B

COMPOSITIONAL ANALYSIS OF THE SEPARATOR GAS, OIL AND MATHEMATICALLY RECOMBINED WELLSTREAM THROUGH C₁₁₊

SEPARATOR GOR.....: 4325 Scf/Sep Bbl
SEPARATOR PRESSURE.....: 200 psig
SEPARATOR TEMPERATURE.....: 68 °F

Component	SEPARATOR GAS		SEPARATOR OIL		WELLSTREAM	
	Mole%	* GPM	Mole %	Liquid Volume %	Mole %	* GPM
Hydrogen Sulfide	0.000	0.000	0.000	0.000	0.000	0.000
Nitrogen	0.562	0.000	0.039	0.010	0.464	0.000
Carbon Dioxide	0.135	0.000	0.018	0.019	0.113	0.000
Methane	70.227	0.000	5.534	0.805	58.156	0.000
Ethane	18.466	4.978	9.358	5.856	16.767	4.520
Propane	7.401	2.055	13.053	8.413	8.456	2.348
Iso-butane	0.627	0.207	2.573	1.970	0.990	0.327
N-butane	1.752	0.557	10.652	7.857	3.413	1.084
2-2 Dimethylpropane	0.009	0.003	0.089	0.080	0.024	0.009
Iso-pentane	0.224	0.083	3.456	2.957	0.827	0.305
N-pentane	0.340	0.124	6.903	5.855	1.565	0.572
2-2 Dimethylbutane	0.003	0.001	0.082	0.080	0.018	0.007
Cyclopentane	0.004	0.001	0.000	0.000	0.003	0.001
2-3 Dimethylbutane	0.006	0.002	0.278	0.267	0.057	0.023
2 Methylpentane	0.049	0.020	1.936	1.880	0.401	0.168
3 Methylpentane	0.027	0.011	1.195	1.142	0.245	0.101
Other Hexanes	0.000	0.000	0.000	0.000	0.000	0.000
n-Hexane	0.083	0.034	4.614	4.439	0.928	0.385
Methylcyclopentane	0.007	0.002	0.627	0.519	0.123	0.044
Benzene	0.001	0.000	0.077	0.050	0.015	0.004
Cyclohexane	0.008	0.003	0.759	0.604	0.148	0.051
2-Methylhexane	0.009	0.004	1.384	1.506	0.266	0.124
3-Methylhexane	0.009	0.004	1.259	1.353	0.242	0.112
2,2,4 Trimethylpentane	0.000	0.000	0.000	0.000	0.000	0.000
Other Heptanes	0.009	0.004	0.659	0.707	0.130	0.060
n-Heptane	0.017	0.008	3.270	3.530	0.624	0.290
Methylcyclohexane	0.008	0.003	1.589	1.495	0.303	0.123
Toluene	0.001	0.000	0.313	0.245	0.059	0.020
Other C-8's	0.009	0.004	4.114	4.757	0.775	0.386
n-Octane	0.003	0.002	2.136	2.560	0.401	0.207
Ethylbenzene	0.000	0.000	0.264	0.238	0.049	0.019
M&P-Xylene	0.001	0.000	0.353	0.320	0.067	0.026
O-Xylene	0.000	0.000	0.566	0.504	0.106	0.041
Other C-9's	0.002	0.001	2.566	3.314	0.480	0.267
n-Nonane	0.001	0.001	1.412	1.859	0.264	0.150
Other C10's	0.000	0.000	2.841	4.032	0.530	0.324
n-Decane	0.000	0.000	0.904	1.298	0.169	0.104
Undecanes Plus	0.000	0.000	15.126	29.479	2.822	2.370
TOTAL	100.000	8.115	100.000	100.000	100.000	14.573

TABLE 1-B

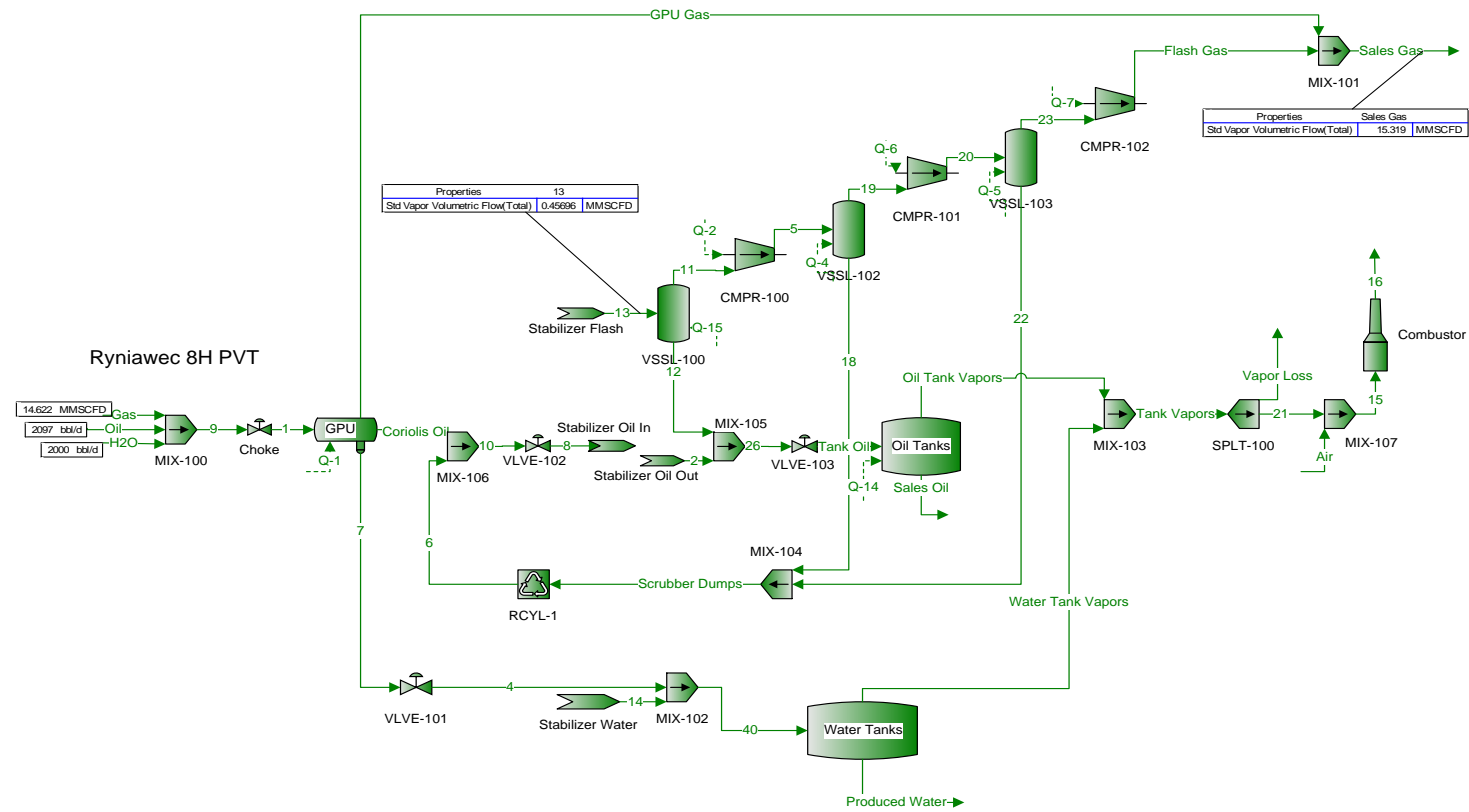
COMPOSITIONAL ANALYSIS OF THE SEPARATOR GAS, OIL AND MATHEMATICALLY RECOMBINED WELLSTREAM THROUGH C₁₁₊

SEPARATOR GOR.....: 4325 Scf/Sep Bbl
 SEPARATOR PRESSURE.....: 200 psig
 SEPARATOR TEMPERATURE.....: 68 °F

UNDECANES PLUS (C ₁₁₊) FRACTION CHARACTERISTICS						
COMPONENT	Specific Gravity		Molecular Weight lb/lb-mole	Vapor Volume Scf/Gal	Gross Heating Value	
	°API	**			***	***
Gas	N/A	0.8250	156.000	16.558	8,400	
Oil	47.071	0.7924	208.300	11.911	130,993	
Wellstream	N/A	0.7924	208.300	11.911	N/A	

TOTAL SAMPLE CHARACTERISTICS						
COMPONENT	Specific Gravity		Molecular Weight lb/lb-mole	Vapor Volume Scf/Gal	Gross Heating Value	
	°API	**			Dry ***	Saturated ***
Gas	N/A	0.7742	22.328	123.223	1,356	1,333
Oil	77.259	0.6778	91.430	23.211	N/A	115,718
Wellstream	N/A	1.2161	35.221	54.574	N/A	N/A

- * GPM (gallons per Mscf) determined at 14.85 psia and 60 °F
- ** Gas specific gravity and wellstream specific gravity determined relative to air (SG=1.000).
Oil specific gravity determined relative to water (SG=1.000).
- *** Gross Heating Value units for gas (real basis) and oil are BTU/Scf and BTU/Gal, respectively.



Annual tank loss calculations for "Tank Oil".
 Total working and breathing losses from the Vertical Cylinder are 122.3 ton/yr.
 Flashing losses are 1,485 ton/yr.
 Loading losses are 116.2 ton/yr of loaded liquid.
 * Only Non-Exempt VOCs are reported.

Tank-1

Annual tank loss calculations for "40".
 Total working and breathing losses from the Vertical Cylinder are 0.3993 ton/yr.
 Flashing losses are 9.915 ton/yr.
 Loading losses are 0.6679 ton/yr of loaded liquid.
 * Only Non-Exempt VOCs are reported.
 Vapor adjusted to ensure mass balance

Tank-2

ProMax AP-42 Emissions Report
 Condensate Annual Emissions
 Vertical Cylinder

Components	Working Losses (ton/yr)	Breathing Losses (ton/yr)	Total Losses (ton/yr)
Mixture	52.06	70.29	122.3
C3	15.98	21.58	37.56
iC4	4.427	5.978	10.41
nC4	16.29	21.99	38.28
2,2-Dimethylbutane	0.06425	0.08676	0.151
iC5	3.716	5.018	8.734
nC5	5.892	7.956	13.85
2,2-Dimethylpropane	0.1886	0.2547	0.4434
Cyclopentane	0.01194	0.01613	0.02807
2,3-Dimethylbutane	0.1557	0.2103	0.366
2-Methylpentane	1.025	1.384	2.409
3-Methylpentane	0.5751	0.7766	1.352
C6	1.813	2.448	4.26
Methylcyclopentane	0.1927	0.2602	0.4529
Benzene	0.01566	0.02115	0.03681
Cyclohexane	0.1724	0.2328	0.4052
2-Methylhexane	0.08647	0.1168	0.2032
3-Methylhexane	0.2462	0.3325	0.5787
2,2,4-Trimethylpentane	0	0	0
C7	0.551	0.744	1.295
Methylcyclohexane	0.1982	0.2677	0.4659
Toluene	0.02269	0.03064	0.05333
C8	0.3073	0.4149	0.7222
Ethylbenzene	0.008404	0.01135	0.01975
m-Xylene	0.01156	0.0156	0.02716
o-Xylene	0.002758	0.003725	0.006483
C9	0.07445	0.1005	0.175
C10	0.02188	0.02954	0.05142
C11	0.005791	0.00782	0.01361
C12	0.00159	0.002147	0.003737
C13	0.0004502	0.0006079	0.001058
C14	0.0001283	0.0001732	0.0003015
C15	3.88E-05	5.24E-05	9.11E-05
C16	9.84E-06	1.33E-05	2.31E-05
C17	2.47E-06	3.34E-06	5.81E-06
C18	8.55E-07	1.16E-06	2.01E-06
C19	2.25E-07	3.03E-07	5.28E-07
C20	5.63E-08	7.60E-08	1.32E-07
C21	1.51E-08	2.04E-08	3.55E-08
C22	4.67E-09	6.31E-09	1.10E-08
C23	1.25E-09	1.69E-09	2.94E-09
C24	3.00E-10	4.05E-10	7.04E-10
C25	5.47E-11	7.39E-11	1.29E-10
C26	4.01E-11	5.42E-11	9.44E-11
C27	6.28E-12	8.48E-12	1.48E-11
C28	1.39E-12	1.87E-12	3.26E-12
C29	5.02E-13	6.77E-13	1.18E-12
C30	3.40E-13	4.60E-13	8.00E-13

Flashing Emissions Report
 Condensate Annual Emissions

Tank flashed at the daily maximum surface temperature (89.97 °F) and the atmospheric pressure of Pittsburgh, Pennsylvania (14.11 psia)

Components	Flashing Losses (ton/yr)
Mixture	1,485
C3	419.2
iC4	126.4
nC4	462.8
2,2-Dimethylbutane	1.876
iC5	111
nC5	179.2
2,2-Dimethylpropane	5.576
Cyclopentane	0.404
2,3-Dimethylbutane	4.65
2-Methylpentane	31.36
3-Methylpentane	17.65
C6	54.57
Methylcyclopentane	6.682
Benzene	0.7574
Cyclohexane	6.28
2-Methylhexane	9.109
3-Methylhexane	7.737
2,2,4-Trimethylpentane	0
C7	17.75
Methylcyclohexane	6.509
Toluene	1.084
C8	10.09
Ethylbenzene	0.3706
m-Xylene	0.3955
o-Xylene	0.1455
C9	2.466
C10	0.7701
C11	0.2073
C12	0.06012
C13	0.01795
C14	0.005456
C15	0.001653
C16	0.0005041
C17	0.000151
C18	6.01E-05
C19	1.98E-05
C20	4.26E-06
C21	1.25E-06
C22	5.28E-07
C23	1.51E-07
C24	2.74E-08
C25	5.54E-09
C26	3.25E-09
C27	4.31E-10
C28	3.30E-10
C29	1.29E-10
C30	3.05E-10

ProMax AP-42 Emissions Report
 Annual Emissions
 Vertical Cylinder

Components	Working Losses (ton/yr)	Breathing Losses (ton/yr)	Total Losses (ton/yr)
Mixture	0.2655	0.1338	0.3993
C3	0.1606	0.0809	0.2415
iC4	0.01125	0.005666	0.01691
nC4	0.04522	0.02279	0.06801
2,2-Dimethylbutane	1.08E-05	5.46E-06	1.63E-05
iC5	0.004344	0.002189	0.006533
nC5	0.0008323	0.0004194	0.001252
2,2-Dimethylpropane	0.0001298	6.54E-05	0.0001953
Cyclopentane	0.0003683	0.0001856	0.0005539
2,3-Dimethylbutane	0.0001856	9.35E-05	0.0002792
2-Methylpentane	0.0002676	0.0001349	0.0004025
3-Methylpentane	0.0009228	0.000465	0.001388
C6	0.0001028	5.18E-05	0.0001545
Methylcyclopentane	0.0009477	0.0004775	0.001425
Benzene	0.01119	0.005638	0.01683
Cyclohexane	0.004387	0.00221	0.006597
2-Methylhexane	4.39E-05	2.21E-05	6.60E-05
3-Methylhexane	5.53E-05	2.79E-05	8.32E-05
2,2,4-Trimethylpentane	0	0	0
C7	1.86E-05	9.39E-06	2.80E-05
Methylcyclohexane	0.0008727	0.0004397	0.001312
Toluene	0.01383	0.006968	0.0208
C8	1.55E-06	7.80E-07	2.33E-06
Ethylbenzene	0.004129	0.002081	0.006209
m-Xylene	0.004191	0.002112	0.006302
o-Xylene	0.00165	0.0008315	0.002482
C9	5.21E-07	2.62E-07	7.83E-07
C10	1.15E-08	5.79E-09	1.73E-08
C11	4.03E-09	2.03E-09	6.07E-09
C12	1.85E-08	9.33E-09	2.78E-08
C13	3.51E-08	1.77E-08	5.27E-08
C14	4.14E-08	2.09E-08	6.23E-08
C15	4.93E-08	2.48E-08	7.41E-08
C16	1.02E-07	5.15E-08	1.54E-07
C17	1.76E-07	8.87E-08	2.65E-07
C18	1.72E-07	8.67E-08	2.59E-07
C19	6.31E-08	3.18E-08	9.50E-08
C20	1.27E-08	6.42E-09	1.92E-08
C21	3.57E-09	1.80E-09	5.36E-09
C22	1.39E-09	7.01E-10	2.09E-09
C23	3.47E-10	1.75E-10	5.22E-10
C24	5.62E-11	2.83E-11	8.46E-11
C25	1.02E-11	5.16E-12	1.54E-11
C26	5.29E-12	2.66E-12	7.95E-12
C27	5.99E-13	3.02E-13	9.01E-13
C28	4.24E-13	2.14E-13	6.38E-13
C29	1.53E-13	7.73E-14	2.31E-13
C30	3.21E-13	1.62E-13	4.82E-13

Flashing Emissions Report

Annual Emissions

Tank flashed at the daily maximum surface temperature (62.42 °F) and the atmospheric pressure of Pittsburgh, Pennsylvania (14.11 psia)

Components	Flashing Losses (ton/yr)
Mixture	9.915
C3	6.577
iC4	0.6053
nC4	2.028
2,2-Dimethylbutane	0.001577
iC5	0.2586
nC5	0.1404
2,2-Dimethylpropane	0.01138
Cyclopentane	0.003796
2,3-Dimethylbutane	0.009863
2-Methylpentane	0.0307
3-Methylpentane	0.04164
C6	0.02444
Methylcyclopentane	0.02519
Benzene	0.02117
Cyclohexane	0.04811
2-Methylhexane	0.006382
3-Methylhexane	0.006553
2,2,4-Trimethylpentane	0
C7	0.005676
Methylcyclohexane	0.02245
Toluene	0.02611
C8	0.001168
Ethylbenzene	0.007969
m-Xylene	0.007892
o-Xylene	0.003171
C9	0.0003157
C10	2.50E-05
C11	7.41E-06
C12	8.12E-06
C13	5.84E-06
C14	3.30E-06
C15	1.87E-06
C16	1.31E-06
C17	7.51E-07
C18	4.07E-07
C19	1.54E-07
C20	3.19E-08
C21	9.08E-09
C22	3.65E-09
C23	9.51E-10
C24	1.58E-10
C25	2.98E-11
C26	1.60E-11
C27	1.88E-12
C28	1.38E-12
C29	5.04E-13
C30	1.10E-12

ATTACHMENT M: NATURAL GAS FIRED FUEL BURNING UNITS DATA SHEET

AP-42 EMISSION FACTORS

**ATTACHMENT M – SMALL HEATERS AND REBOILERS NOT SUBJECT TO
40CFR60 SUBPART DC
DATA SHEET**

Complete this data sheet for each small heater and reboiler not subject to 40CFR60 Subpart Dc at the facility. *The Maximum Design Heat Input (MDHI) must be less than 10 MMBTU/hr.*

Emission Unit ID# ¹	Emission Point ID# ²	Emission Unit Description (manufacturer, model #)	Year Installed/Modified	Type ³ and Date of Change	Maximum Design Heat Input (MMBTU/hr) ⁴	Fuel Heating Value (BTU/scf) ⁵
EU-GPU1	EP-GPU1	Gas Production Unit Burner	2012	EXIST	1.0	905
EU-GPU2	EP-GPU2	Gas Production Unit Burner	TBD	NEW	1.0	905
EU-GPU3	EP-GPU3	Gas Production Unit Burner	TBD	NEW	1.0	905
EU-GPU4	EP-GPU4	Gas Production Unit Burner	TBD	NEW	1.0	905
EU-GPU5	EP-GPU5	Gas Production Unit Burner	TBD	NEW	1.0	905
EU-SH1	EP-SH1	Stabilizer Heater	TBD	NEW	1.5	905
EU-SH2	EP-SH2	Stabilizer Heater	TBD	NEW	1.5	905

- ¹ Enter the appropriate Emission Unit (or Source) identification number for each fuel burning unit located at the production pad. Gas Producing Unit Burners should be designated GPU-1, GPU-2, etc. Heater Treaters should be designated HT-1, HT-2, etc. Heaters or Line Heaters should be designated LH-1, LH-2, etc. For sources, use 1S, 2S, 3S...or other appropriate designation. Enter glycol dehydration unit Reboiler Vent data on the Glycol Dehydration Unit Data Sheet.
- ² Enter the appropriate Emission Point identification numbers for each fuel burning unit located at the production pad. Gas Producing Unit Burners should be designated GPU-1, GPU-2, etc. Heater Treaters should be designated HT-1, HT-2, etc. Heaters or Line Heaters should be designated LH-1, LH-2, etc. For emission points, use 1E, 2E, 3E...or other appropriate designation.
- ³ New, modification, removal
- ⁴ Enter design heat input capacity in MMBtu/hr.
- ⁵ Enter the fuel heating value in BTU/standard cubic foot.

Table 1.4-1. EMISSION FACTORS FOR NITROGEN OXIDES (NO_x) AND CARBON MONOXIDE (CO)
FROM NATURAL GAS COMBUSTION^a

Combustor Type (MMBtu/hr Heat Input) [SCC]	NO _x ^b		CO	
	Emission Factor (lb/10 ⁶ scf)	Emission Factor Rating	Emission Factor (lb/10 ⁶ scf)	Emission Factor Rating
Large Wall-Fired Boilers (>100) [1-01-006-01, 1-02-006-01, 1-03-006-01]				
Uncontrolled (Pre-NSPS) ^c	280	A	84	B
Uncontrolled (Post-NSPS) ^c	190	A	84	B
Controlled - Low NO _x burners	140	A	84	B
Controlled - Flue gas recirculation	100	D	84	B
Small Boilers (<100) [1-01-006-02, 1-02-006-02, 1-03-006-02, 1-03-006-03]				
Uncontrolled	100	B	84	B
Controlled - Low NO _x burners	50	D	84	B
Controlled - Low NO _x burners/Flue gas recirculation	32	C	84	B
Tangential-Fired Boilers (All Sizes) [1-01-006-04]				
Uncontrolled	170	A	24	C
Controlled - Flue gas recirculation	76	D	98	D
Residential Furnaces (<0.3) [No SCC]				
Uncontrolled	94	B	40	B

^a Reference 11. Units are in pounds of pollutant per million standard cubic feet of natural gas fired. To convert from lb/10⁶ scf to kg/10⁶ m³, multiply by 16. Emission factors are based on an average natural gas higher heating value of 1,020 Btu/scf. To convert from lb/10⁶ scf to lb/MMBtu, divide by 1,020. The emission factors in this table may be converted to other natural gas heating values by multiplying the given emission factor by the ratio of the specified heating value to this average heating value. SCC = Source Classification Code. ND = no data. NA = not applicable.

^b Expressed as NO₂. For large and small wall fired boilers with SNCR control, apply a 24 percent reduction to the appropriate NO_x emission factor. For tangential-fired boilers with SNCR control, apply a 13 percent reduction to the appropriate NO_x emission factor.

^c NSPS=New Source Performance Standard as defined in 40 CFR 60 Subparts D and Db. Post-NSPS units are boilers with greater than 250 MMBtu/hr of heat input that commenced construction modification, or reconstruction after August 17, 1971, and units with heat input capacities between 100 and 250 MMBtu/hr that commenced construction modification, or reconstruction after June 19, 1984.

TABLE 1.4-3. EMISSION FACTORS FOR SPECIATED ORGANIC COMPOUNDS FROM NATURAL GAS COMBUSTION^a

CAS No.	Pollutant	Emission Factor (lb/10 ⁶ scf)	Emission Factor Rating
91-57-6	2-Methylnaphthalene ^{b,c}	2.4E-05	D
56-49-5	3-Methylchloranthrene ^{b,c}	<1.8E-06	E
	7,12-Dimethylbenz(a)anthracene ^{b,c}	<1.6E-05	E
83-32-9	Acenaphthene ^{b,c}	<1.8E-06	E
203-96-8	Acenaphthylene ^{b,c}	<1.8E-06	E
120-12-7	Anthracene ^{b,c}	<2.4E-06	E
56-55-3	Benz(a)anthracene ^{b,c}	<1.8E-06	E
71-43-2	Benzene ^b	2.1E-03	B
50-32-8	Benzo(a)pyrene ^{b,c}	<1.2E-06	E
205-99-2	Benzo(b)fluoranthene ^{b,c}	<1.8E-06	E
191-24-2	Benzo(g,h,i)perylene ^{b,c}	<1.2E-06	E
205-82-3	Benzo(k)fluoranthene ^{b,c}	<1.8E-06	E
106-97-8	Butane	2.1E+00	E
218-01-9	Chrysene ^{b,c}	<1.8E-06	E
53-70-3	Dibenzo(a,h)anthracene ^{b,c}	<1.2E-06	E
25321-22-6	Dichlorobenzene ^b	1.2E-03	E
74-84-0	Ethane	3.1E+00	E
206-44-0	Fluoranthene ^{b,c}	3.0E-06	E
86-73-7	Fluorene ^{b,c}	2.8E-06	E
50-00-0	Formaldehyde ^b	7.5E-02	B
110-54-3	Hexane ^b	1.8E+00	E
193-39-5	Indeno(1,2,3-cd)pyrene ^{b,c}	<1.8E-06	E
91-20-3	Naphthalene ^b	6.1E-04	E
109-66-0	Pentane	2.6E+00	E
85-01-8	Phenanathrene ^{b,c}	1.7E-05	D

TABLE 1.4-3. EMISSION FACTORS FOR SPECIATED ORGANIC COMPOUNDS FROM NATURAL GAS COMBUSTION (Continued)

CAS No.	Pollutant	Emission Factor (lb/10 ⁶ scf)	Emission Factor Rating
74-98-6	Propane	1.6E+00	E
129-00-0	Pyrene ^{b, c}	5.0E-06	E
108-88-3	Toluene ^b	3.4E-03	C

^a Reference 11. Units are in pounds of pollutant per million standard cubic feet of natural gas fired. Data are for all natural gas combustion sources. To convert from lb/10⁶ scf to kg/10⁶ m³, multiply by 16. To convert from lb/10⁶ scf to lb/MMBtu, divide by 1,020. Emission Factors preceded with a less-than symbol are based on method detection limits.

^b Hazardous Air Pollutant (HAP) as defined by Section 112(b) of the Clean Air Act.

^c HAP because it is Polycyclic Organic Matter (POM). POM is a HAP as defined by Section 112(b) of the Clean Air Act.

^d The sum of individual organic compounds may exceed the VOC and TOC emission factors due to differences in test methods and the availability of test data for each pollutant.

ATTACHMENT N: INTERNAL COMBUSTION ENGINE DATA SHEETS

ENGINE SPECIFICATION SHEETS

AP-42 AND EPA EMISSION FACTORS

ATTACHMENT N – INTERNAL COMBUSTION ENGINE DATA SHEET

Complete this data sheet for each internal combustion engine at the facility. Include manufacturer performance data sheet(s) or any other supporting document if applicable. Use extra pages if necessary. *Generator(s) and microturbine generator(s) shall also use this form.*

Emission Unit ID# ¹		EU-ENG1		EU-ENG2			
Engine Manufacturer/Model		Caterpillar G3306 NA		Caterpillar G3306 NA			
Manufacturers Rated bhp/rpm		145-hp/1,800-rpm		145-hp/1,800-rpm			
Source Status ²		NS		NS			
Date Installed/ Modified/Removed/Relocated ³		TBD		TBD			
Engine Manufactured /Reconstruction Date ⁴		After 1/1/2011		After 1/1/2011			
Check all applicable Federal Rules for the engine (include EPA Certificate of Conformity if applicable) ⁵		<input checked="" type="checkbox"/> 40CFR60 Subpart JJJ <input type="checkbox"/> JJJ Certified? <input type="checkbox"/> 40CFR60 Subpart IIII <input type="checkbox"/> IIII Certified? <input checked="" type="checkbox"/> 40CFR63 Subpart ZZZZ <input type="checkbox"/> NESHAP ZZZZ/ NSPS JJJJ Window <input type="checkbox"/> NESHAP ZZZZ Remote Sources		<input checked="" type="checkbox"/> 40CFR60 Subpart JJJ <input type="checkbox"/> JJJ Certified? <input type="checkbox"/> 40CFR60 Subpart IIII <input type="checkbox"/> IIII Certified? <input checked="" type="checkbox"/> 40CFR63 Subpart ZZZZ <input type="checkbox"/> NESHAP ZZZZ/ NSPS JJJJ Window <input type="checkbox"/> NESHAP ZZZZ Remote Sources		<input type="checkbox"/> 40CFR60 Subpart JJJ <input type="checkbox"/> JJJ Certified? <input type="checkbox"/> 40CFR60 Subpart IIII <input type="checkbox"/> IIII Certified? <input type="checkbox"/> 40CFR63 Subpart ZZZZ <input type="checkbox"/> NESHAP ZZZZ/ NSPS JJJJ Window <input type="checkbox"/> NESHAP ZZZZ Remote Sources	
Engine Type ⁶		4SRB		4SRB			
APCD Type ⁷		NSCR		NSCR			
Fuel Type ⁸		PQ		PQ			
H ₂ S (gr/100 scf)		Negligible		Negligible			
Operating bhp/rpm		145-hp/1,800-rpm		145-hp/1,800-rpm			
BSFC (BTU/bhp-hr)		8,625		8,625			
Hourly Fuel Throughput		1,382	ft ³ /hr gal/hr	1,382	ft ³ /hr gal/hr	ft ³ /hr gal/hr	
Annual Fuel Throughput (Must use 8,760 hrs/yr unless emergency generator)		12.11	MMft ³ /yr gal/yr	12.11	MMft ³ /yr gal/yr	MMft ³ /yr gal/yr	
Fuel Usage or Hours of Operation Metered		Yes <input type="checkbox"/> No <input checked="" type="checkbox"/>		Yes <input type="checkbox"/> No <input checked="" type="checkbox"/>		Yes <input type="checkbox"/> No <input type="checkbox"/>	
Calculation Methodology ⁹	Pollutant ¹⁰	Hourly PTE (lb/hr) ¹¹	Annual PTE (tons/year) ¹¹	Hourly PTE (lb/hr) ¹¹	Annual PTE (tons/year) ¹¹	Hourly PTE (lb/hr) ¹¹	Annual PTE (tons/year) ¹¹
MD	NO _x	0.32	1.40	0.32	1.40		
MD	CO	0.64	2.80	0.64	2.80		
MD	VOC	0.22	0.98	0.22	0.98		
AP	SO ₂	<0.01	<0.01	<0.01	<0.01		
AP	PM ₁₀	0.01	0.05	0.01	0.05		
MD	Formaldehyde	0.09	0.38	0.09	0.38		
AP	Total HAPs	0.10	0.44	0.10	0.44		
MD and EPA	GHG (CO ₂ e)	155.19	679.73	155.19	679.73		

1 Enter the appropriate Source Identification Number for each natural gas-fueled reciprocating internal combustion engine/generator engine located at the well site. Multiple engines should be designated CE-1, CE-2, CE-3 etc. Generator engines should be designated GE-1, GE-2, GE-3 etc. Microturbine generator engines should be designated MT-1, MT-2, MT-3 etc. If more than three (3) engines exist, please use additional sheets.

2 Enter the Source Status using the following codes:

NS	Construction of New Source (installation)	ES	Existing Source
MS	Modification of Existing Source	RS	Relocated Source
REM	Removal of Source		

- 3 Enter the date (or anticipated date) of the engine's installation (construction of source), modification, relocation or removal.
- 4 Enter the date that the engine was manufactured, modified or reconstructed.
- 5 Is the engine a certified stationary spark ignition internal combustion engine according to 40CFR60 Subpart IIII/JJJJ? If so, the engine and control device must be operated and maintained in accordance with the manufacturer's emission-related written instructions. You must keep records of conducted maintenance to demonstrate compliance, but no performance testing is required. If the certified engine is not operated and maintained in accordance with the manufacturer's emission-related written instructions, the engine will be considered a non-certified engine and you must demonstrate compliance as appropriate.

Provide a manufacturer's data sheet for all engines being registered.

- 6 Enter the Engine Type designation(s) using the following codes:

2SLB Two Stroke Lean Burn	4SRB Four Stroke Rich Burn	
4SLB Four Stroke Lean Burn		
- 7 Enter the Air Pollution Control Device (APCD) type designation(s) using the following codes:

A/F Air/Fuel Ratio	IR Ignition Retard	
HEIS High Energy Ignition System	SIPC Screw-in Precombustion Chambers	
PSC Prestratified Charge	LEC Low Emission Combustion	
NSCR Rich Burn & Non-Selective Catalytic Reduction	OxCat Oxidation Catalyst	
SCR Lean Burn & Selective Catalytic Reduction		
- 8 Enter the Fuel Type using the following codes:

PQ Pipeline Quality Natural Gas	RG Raw Natural Gas /Production Gas	D Diesel
---------------------------------	------------------------------------	----------
- 9 Enter the Potential Emissions Data Reference designation using the following codes. Attach all reference data used.

MD Manufacturer's Data	AP AP-42	
GR GRI-HAPCalc™	OT Other	(please list)
- 10 Enter each engine's Potential to Emit (PTE) for the listed regulated pollutants in pounds per hour and tons per year. PTE shall be calculated at manufacturer's rated brake horsepower and may reflect reduction efficiencies of listed Air Pollution Control Devices. Emergency generator engines may use 500 hours of operation when calculating PTE. PTE data from this data sheet shall be incorporated in the *Emissions Summary Sheet*.
- 11 PTE for engines shall be calculated from manufacturer's data unless unavailable.

**Engine Air Pollution Control Device
(Emission Unit ID# APC-NSCR-ENG-1, ENG-2 use extra pages as necessary)**

Air Pollution Control Device Manufacturer's Data Sheet included?
Yes No

NSCR SCR Oxidation Catalyst

Provide details of process control used for proper mixing/control of reducing agent with gas stream:

Manufacturer: N/A	Model #: N/A
-------------------	--------------

Design Operating Temperature: 1,101 °F	Design gas volume: 678 scfm
----------------------------------------	-----------------------------

Service life of catalyst:	Provide manufacturer data? <input checked="" type="checkbox"/> Yes <input type="checkbox"/> No
---------------------------	------------------------------------------------------------------------------------------------

Volume of gas handled: acfm at °F	Operating temperature range for NSCR/Ox Cat: From 600 °F to 1,250 °F
---------------------------------------------------------	-------------------------------------------------------------------------

Reducing agent used, if any:	Ammonia slip (ppm):
------------------------------	---------------------

Pressure drop against catalyst bed (delta P): inches of H₂O

Provide description of warning/alarm system that protects unit when operation is not meeting design conditions:

Is temperature and pressure drop of catalyst required to be monitored per 40CFR63 Subpart ZZZZ?
 Yes No

How often is catalyst recommended or required to be replaced (hours of operation)?

How often is performance test required?
 Initial
 Annual
 Every 8,760 hours of operation
 Field Testing Required
 No performance test required. If so, why (please list any maintenance required and the applicable sections in NSPS/GACT,

G3306 NA

GAS COMPRESSION APPLICATION

GAS ENGINE SITE SPECIFIC TECHNICAL DATA



ENGINE SPEED (rpm):	1800	FUEL SYSTEM:	LPG IMPCO
COMPRESSION RATIO:	10.5:1	WITH CUSTOMER SUPPLIED AIR FUEL RATIO CONTROL	
JACKET WATER OUTLET (°F):	210	SITE CONDITIONS:	
COOLING SYSTEM:	JW+OC	FUEL:	Nat Gas
IGNITION SYSTEM:	MAG	FUEL PRESSURE RANGE (psig):	1.5-10.0
EXHAUST MANIFOLD:	WC	FUEL METHANE NUMBER:	84.8
COMBUSTION:	Catalyst	FUEL LHV (Btu/scf):	905
EXHAUST O2 EMISSION LEVEL %:	0.5	ALTITUDE (ft):	500
SET POINT TIMING:	30.0	MAXIMUM INLET AIR TEMPERATURE (°F):	77
		NAMEPLATE RATING:	145 bhp@1800rpm

RATING	NOTES	LOAD	MAXIMUM RATING	SITE RATING AT MAXIMUM INLET AIR TEMPERATURE		
			100%	100%	75%	50%
ENGINE POWER	(1)	bhp	145	145	109	72
INLET AIR TEMPERATURE		°F	77	77	77	77

ENGINE DATA						
FUEL CONSUMPTION (LHV)	(2)	Btu/bhp-hr	7775	7775	8318	9509
FUEL CONSUMPTION (HHV)	(2)	Btu/bhp-hr	8625	8625	9227	10548
AIR FLOW	(3)(4)	lb/hr	922	922	739	556
AIR FLOW WET (77°F, 14.7 psia)	(3)(4)	scfm	208	208	167	125
INLET MANIFOLD PRESSURE	(5)	in Hg(abs)	26.2	26.2	21.8	17.6
EXHAUST STACK TEMPERATURE	(6)	°F	1101	1101	1067	1037
EXHAUST GAS FLOW (@ stack temp, 14.5 psia)	(7)(4)	ft3/min	678	678	532	393
EXHAUST GAS MASS FLOW	(7)(4)	lb/hr	978	978	784	590

EMISSIONS DATA						
NOx (as NO2)	(8)	g/bhp-hr	13.47	13.47	12.15	9.76
CO	(8)	g/bhp-hr	13.47	13.47	11.44	9.56
THC (mol. wt. of 15.84)	(8)	g/bhp-hr	2.20	2.20	2.49	3.22
NMHC (mol. wt. of 15.84)	(8)	g/bhp-hr	0.33	0.33	0.37	0.48
NMNEHC (VOCs) (mol. wt. of 15.84)	(8)(9)	g/bhp-hr	0.22	0.22	0.25	0.32
HCHO (Formaldehyde)	(8)	g/bhp-hr	0.27	0.27	0.31	0.33
CO2	(8)	g/bhp-hr	485	485	525	601
EXHAUST OXYGEN	(10)	% DRY	0.5	0.5	0.5	0.5

HEAT REJECTION						
HEAT REJ. TO JACKET WATER (JW)	(11)	Btu/min	6049	6049	5237	4455
HEAT REJ. TO ATMOSPHERE	(11)	Btu/min	751	751	602	459
HEAT REJ. TO LUBE OIL (OC)	(11)	Btu/min	990	990	857	729

HEAT EXCHANGER SIZING CRITERIA			
TOTAL JACKET WATER CIRCUIT (JW+OC)	(12)	Btu/min	7842

CONDITIONS AND DEFINITIONS

Engine rating obtained and presented in accordance with ISO 3046/1, adjusted for fuel, site altitude and site inlet air temperature.
 100% rating at maximum inlet air temperature is the maximum engine capability for the specified fuel at site altitude and maximum site inlet air temperature.
 Max. rating is the maximum capability for the specified fuel at site altitude and reduced inlet air temperature.
 Lowest load point is the lowest continuous duty operating load allowed. No overload permitted at rating shown.

For notes information consult page three.



Prepared For:

Jason Stinson
MIDCON COMPRESSION, LP

MANUFACTURED ON OR AFTER 1/1/2011

INFORMATION PROVIDED BY CATERPILLAR

Engine: G3306 NA
Horsepower: 145
RPM: 1800
Compression Ratio: 10.5:1
Exhaust Flow Rate: 678 CFM
Exhaust Temperature: 1101 °F
Reference: DM5053-07
Fuel: Natural Gas
Annual Operating Hours: 8760

Uncontrolled Emissions

NOx: 13.47 g/bhp-hr
CO: 13.47 g/bhp-hr
THC: 2.20 g/bhp-hr
NMHC: 0.33 g/bhp-hr
NMNEHC: 0.22 g/bhp-hr
HCHO: 0.27 g/bhp-hr
Oxygen: 0.50 %

POST CATALYST EMISSIONS

NOx: <1.0 g/bhp-hr
CO: <2.0 g/bhp-hr
VOC: <0.7 g/bhp-hr

CONTROL EQUIPMENT

Catalytic Converter

Model: **EAH-1200T-0404F-21CEE**
Catalyst Type: NSCR, Precious group metals
Manufacturer: EMIT Technologies, Inc.
Element Size: Round 12 x 3.5
Catalyst Elements: 1
Housing Type: 2 Element Capacity
Catalyst Installation: Accessible Housing
Construction: 10 gauge Carbon Steel
Sample Ports: 6 (0.5" NPT)
Inlet Connections: 4" Flat Face Flange
Outlet Connections: 4" Flat Face Flange
Configuration: End In / End Out
Silencer: Integrated
Silencer Grade: Hospital
Insertion Loss: 35-40 dBA

Air Fuel Ratio Controller

Model: **ENG-S-075-T**
Manufacturer: EMIT Technologies, Inc.
Description: EDGE NG Air Fuel Ratio Controller
4-Wire Narrowband O2 Sensor
Digital Power Valve
O2 Sensor Weldment
Wiring Harness
(2) 25' Type K Thermocouple
Digital Power Valve Size: 0.75" NPT

Table 3.2-3. UNCONTROLLED EMISSION FACTORS FOR 4-STROKE RICH-BURN
 ENGINES^a
 (SCC 2-02-002-53)

Pollutant	Emission Factor (lb/MMBtu) ^b (fuel input)	Emission Factor Rating
Criteria Pollutants and Greenhouse Gases		
NO _x ^c 90 - 105% Load	2.21 E+00	A
NO _x ^c <90% Load	2.27 E+00	C
CO ^c 90 - 105% Load	3.72 E+00	A
CO ^c <90% Load	3.51 E+00	C
CO ₂ ^d	1.10 E+02	A
SO ₂ ^e	5.88 E-04	A
TOC ^f	3.58 E-01	C
Methane ^g	2.30 E-01	C
VOC ^h	2.96 E-02	C
PM10 (filterable) ^{i,j}	9.50 E-03	E
PM2.5 (filterable) ^j	9.50 E-03	E
PM Condensable ^k	9.91 E-03	E
Trace Organic Compounds		
1,1,2,2-Tetrachloroethane ^l	2.53 E-05	C
1,1,2-Trichloroethane ^l	<1.53 E-05	E
1,1-Dichloroethane	<1.13 E-05	E
1,2-Dichloroethane	<1.13 E-05	E
1,2-Dichloropropane	<1.30 E-05	E
1,3-Butadiene ^l	6.63 E-04	D
1,3-Dichloropropene ^l	<1.27 E-05	E
Acetaldehyde ^{l,m}	2.79 E-03	C
Acrolein ^{l,m}	2.63 E-03	C
Benzene ^l	1.58 E-03	B
Butyr/isobutyraldehyde	4.86 E-05	D
Carbon Tetrachloride ^l	<1.77 E-05	E

Table 3.2-3. UNCONTROLLED EMISSION FACTORS FOR 4-STROKE RICH-BURN ENGINES
(Concluded)

Pollutant	Emission Factor (lb/MMBtu) ^b (fuel input)	Emission Factor Rating
Chlorobenzene ¹	<1.29 E-05	E
Chloroform ¹	<1.37 E-05	E
Ethane ⁿ	7.04 E-02	C
Ethylbenzene ¹	<2.48 E-05	E
Ethylene Dibromide ¹	<2.13 E-05	E
Formaldehyde ^{1,m}	2.05 E-02	A
Methanol ¹	3.06 E-03	D
Methylene Chloride ¹	4.12 E-05	C
Naphthalene ¹	<9.71 E-05	E
PAH ¹	1.41 E-04	D
Styrene ¹	<1.19 E-05	E
Toluene ¹	5.58 E-04	A
Vinyl Chloride ¹	<7.18 E-06	E
Xylene ¹	1.95 E-04	A

^a Reference 7. Factors represent uncontrolled levels. For NO_x, CO, and PM-10, “uncontrolled” means no combustion or add-on controls; however, the factor may include turbocharged units. For all other pollutants, “uncontrolled” means no oxidation control; the data set may include units with control techniques used for NO_x control, such as PCC and SCR for lean burn engines, and PSC for rich burn engines. Factors are based on large population of engines. Factors are for engines at all loads, except as indicated. SCC = Source Classification Code. TOC = Total Organic Compounds. PM10 = Particulate Matter ≤ 10 microns (μm) aerodynamic diameter. A “<” sign in front of a factor means that the corresponding emission factor is based on one-half of the method detection limit.

^b Emission factors were calculated in units of (lb/MMBtu) based on procedures in EPA Method 19. To convert from (lb/MMBtu) to (lb/10⁶ scf), multiply by the heat content of the fuel. If the heat content is not available, use 1020 Btu/scf. To convert from (lb/MMBtu) to (lb/hp-hr) use the following equation:

$$\text{lb/hp-hr} = (\text{lb/MMBtu}) (\text{heat input, MMBtu/hr}) (1/\text{operating HP, 1/hp})$$

^c Emission tests with unreported load conditions were not included in the data set.

^d Based on 99.5% conversion of the fuel carbon to CO₂. CO₂ [lb/MMBtu] = (3.67)(%CON)(C)(D)(1/h), where %CON = percent conversion of fuel carbon to CO₂,

C = carbon content of fuel by weight (0.75), D = density of fuel, $4.1 \text{ E}+04 \text{ lb}/10^6 \text{ scf}$, and h = heating value of natural gas (assume 1020 Btu/scf at 60°F).

^e Based on 100% conversion of fuel sulfur to SO₂. Assumes sulfur content in natural gas of $2,000 \text{ gr}/10^6 \text{ scf}$.

^f Emission factor for TOC is based on measured emission levels from 6 source tests.

^g Emission factor for methane is determined by subtracting the VOC and ethane emission factors from the TOC emission factor.

^h VOC emission factor is based on the sum of the emission factors for all speciated organic compounds. Methane and ethane emissions were not measured for this engine category.

ⁱ No data were available for uncontrolled engines. PM10 emissions are for engines equipped with a PCC.

^j Considered $\leq 1 \mu\text{m}$ in aerodynamic diameter. Therefore, for filterable PM emissions, PM10(filterable) = PM2.5(filterable).

^k No data were available for condensable emissions. The presented emission factor reflects emissions from 4SLB engines.

^l Hazardous Air Pollutant as defined by Section 112(b) of the Clean Air Act.

^m For rich-burn engines, no interference is suspected in quantifying aldehyde emissions. The presented emission factors are based on FTIR and CARB 430 emissions data measurements.

ⁿ Ethane emission factor is determined by subtracting the VOC emission factor from the NMHC emission factor.

ATTACHMENT O: TANKER TRUCK LOADING DATA SHEET

ATTACHMENT O – TANKER TRUCK/RAIL CAR LOADING DATA SHEET

Complete this data sheet for each new or modified bulk liquid transfer area or loading rack at the facility. This is to be used for bulk liquid transfer operations to tanker trucks/rail cars. Use extra pages if necessary.

Truck/Rail Car Loadout Collection Efficiencies

The following applicable capture efficiencies of a truck/rail car loadout are allowed:

- For tanker trucks/rail cars passing the MACT level annual leak test – 99.2%
- For tanker trucks/rail cars passing the NSPS level annual leak test – 98.7%
- For tanker trucks/rail cars not passing one of the annual leak tests listed above – 70%

Compliance with this requirement shall be demonstrated by keeping records of the applicable MACT or NSPS Annual Leak Test certification for *every* truck and railcar loaded/unloaded. This requirement can be satisfied if the trucking/rail car company provided certification that its entire fleet was compliant. This certification must be submitted in writing to the Director of the DAQ. These additional requirements must be noted in the Registration Application.

Emission Unit ID#: EU-LOAD-COND	Emission Point ID#: EP-LOAD-COND/APC-COMB	Year Installed/Modified: 2012
---------------------------------	-------------------------------------------	-------------------------------

Emission Unit Description: Condensate Truck Loading Emissions

Loading Area Data

Number of Pumps: 1	Number of Liquids Loaded: 1	Max number of trucks/rail cars loading at one (1) time: 1
--------------------	-----------------------------	-----------------------------------------------------------

Are tanker trucks/rail cars pressure tested for leaks at this or any other location? Yes No Not Required
If Yes, Please describe:

Provide description of closed vent system and any bypasses. Vapors are collected and routed to a vapor combustor.

Are any of the following truck/rail car loadout systems utilized?
 Closed System to tanker truck/rail car passing a MACT level annual leak test?
 Closed System to tanker truck/rail car passing a NSPS level annual leak test?
 Closed System to tanker truck/rail car not passing an annual leak test and has vapor return?

Projected Maximum Operating Schedule (for rack or transfer point as a whole)

Time	Jan – Mar	Apr - Jun	Jul – Sept	Oct - Dec
Hours/day	24	24	24	24
Days/week	5	5	5	5

Bulk Liquid Data (use extra pages as necessary)

Liquid Name	Condensate		
Max. Daily Throughput (1000 gal/day)	68.31		
Max. Annual Throughput (1000 gal/yr)	24,934.55		
Loading Method ¹	SUB		
Max. Fill Rate (gal/min)	125		
Average Fill Time (min/loading)	Approx. 60		
Max. Bulk Liquid Temperature (°F)	109.55		
True Vapor Pressure ²	13.6828		
Cargo Vessel Condition ³	U		
Control Equipment or Method ⁴	O = Vapor Return/ Combustion Controls		
Max. Collection Efficiency (%)	70%		

Max. Control Efficiency (%)		98%		
Max.VOC Emission Rate	Loading (lb/hr)	20.05		
	Annual (ton/yr)	33.33		
Max.HAP Emission Rate	Loading (lb/hr)	1.37		
	Annual (ton/yr)	2.28		
Estimation Method ⁵		EPA/O = ProMax process simulation		

Emission Unit ID#: EU-LOAD-PW		Emission Point ID#: EP-LOAD-PW/APC-COMB		Year Installed/Modified: 2012	
Emission Unit Description: Produced Water Truck Loading Emissions					
Loading Area Data					
Number of Pumps: 1		Number of Liquids Loaded: 1		Max number of trucks/rail cars loading at one (1) time: 1	
Are tanker trucks/rail cars pressure tested for leaks at this or any other location? <input type="checkbox"/> Yes <input checked="" type="checkbox"/> No <input type="checkbox"/> Not Required If Yes, Please describe:					
Provide description of closed vent system and any bypasses. Vapors are collected and routed to a vapor combustor.					
Are any of the following truck/rail car loadout systems utilized? <input type="checkbox"/> Closed System to tanker truck/rail car passing a MACT level annual leak test? <input type="checkbox"/> Closed System to tanker truck/rail car passing a NSPS level annual leak test? <input type="checkbox"/> Closed System to tanker truck/rail car not passing an annual leak test and has vapor return?					
Projected Maximum Operating Schedule (for rack or transfer point as a whole)					
Time	Jan – Mar		Apr - Jun		Jul – Sept
Hours/day	24		24		24
Days/week	5		5		5
Bulk Liquid Data (use extra pages as necessary)					
Liquid Name	Produced Water				
Max. Daily Throughput (1000 gal/day)	83.84				
Max. Annual Throughput (1000 gal/yr)	30,599.91				
Loading Method ¹	SUB				
Max. Fill Rate (gal/min)	125				
Average Fill Time (min/loading)	Approx. 60				
Max. Bulk Liquid Temperature (°F)	60.35				
True Vapor Pressure ²	13.4335				
Cargo Vessel Condition ³	U				
Control Equipment or Method ⁴	O = Vapor Return/ Combustion Controls				
Max. Collection Efficiency (%)	70%				
Max. Control Efficiency (%)	98%				
Max.VOC Emission Rate	Loading (lb/hr)	1.33			
	Annual (ton/yr)	2.72			
Max.HAP Emission Rate	Loading (lb/hr)	0.09			
	Annual (ton/yr)	0.19			
Estimation Method ⁵	EPA/O = ProMax process simulation				

- | | | | | | | |
|---|-----|---------------------------------------------------------------------------------------------|----|-----------------------------------------|-----|-------------------------------|
| 1 | BF | Bottom Fill | SP | Splash Fill | SUB | Submerged Fill |
| 2 | | At maximum bulk liquid temperature | | | | |
| 3 | B | Ballasted Vessel | C | Cleaned | U | Uncleaned (dedicated service) |
| | O | Other (describe) | | | | |
| 4 | | List as many as apply (complete and submit appropriate Air Pollution Control Device Sheets) | | | | |
| | CA | Carbon Adsorption | VB | Dedicated Vapor Balance (closed system) | | |
| | ECD | Enclosed Combustion Device | F | Flare | | |
| | TO | Thermal Oxidization or Incineration | | | | |
| 5 | EPA | EPA Emission Factor in AP-42 | MB | Material Balance | | |
| | TM | Test Measurement based upon test data submittal | O | Other (describe) | | |

ATTACHMENT Q: PNEUMATIC CONTROLLERS DATA SHEET

**ATTACHMENT Q – PNEUMATIC CONTROLLERS
DATA SHEET**

Are there any continuous bleed natural gas driven pneumatic controllers at this facility that commenced construction, modification or reconstruction after August 23, 2011, and on or before September 18, 2015?

Yes No

Please list approximate number.

Are there any continuous bleed natural gas driven pneumatic controllers at this facility that commenced construction, modification or reconstruction after September 18, 2015?

Yes No

Please list approximate number.

Are there any continuous bleed natural gas driven pneumatic controllers at this facility with a bleed rate greater than 6 standard cubic feet per hour that are required based on functional needs, including but not limited to response time, safety and positive actuation that commenced construction, modification or reconstruction after August 23, 2011, and on or before September 18, 2015?

Yes No

Please list approximate number.

Are there any continuous bleed natural gas driven pneumatic controllers at this facility with a bleed rate greater than 6 standard cubic feet per hour that are required based on functional needs, including but not limited to response time, safety and positive actuation that commenced construction, modification or reconstruction after September 18, 2015?

Yes No

Please list approximate number.

ATTACHMENT R: PNEUMATIC PUMP DATA SHEET

**ATTACHMENT S: AIR POLLUTION CONTROL DEVICE/EMISSION REDUCTION
DEVICES SHEETS**

VAPOR COMBUSTION

AP-42 EMISSION FACTORS

**ATTACHMENT S – AIR POLLUTION CONTROL DEVICE /
EMISSION REDUCTION DEVICE SHEETS**

Complete the applicable air pollution control device sheets for each flare, vapor combustor, thermal oxidizer, condenser, adsorption system, vapor recovery unit, BTEX Eliminator, Reboiler with and without Glow Plug, etc. at the facility. Use extra pages if necessary.

Emissions calculations must be performed using the most conservative control device efficiency.

The following five (5) rows are only to be completed if registering an alternative air pollution control device.

Emission Unit ID:	Make/Model:
Primary Control Device ID:	Make/Model:
Control Efficiency (%):	APCD/ERD Data Sheet Completed: <input type="checkbox"/> Yes <input type="checkbox"/> No
Secondary Control Device ID:	Make/Model:
Control Efficiency (%):	APCD/ERD Data Sheet Completed: <input type="checkbox"/> Yes <input type="checkbox"/> No

VAPOR COMBUSTION (Including Enclosed Combustors)

General Information

Control Device ID#: APC-COMB	Installation Date: 2013 <input type="checkbox"/> New <input checked="" type="checkbox"/> Modified <input type="checkbox"/> Relocated	
Maximum Rated Total Flow Capacity 11,187.5 scfh 268,500 scfd	Maximum Design Heat Input (from mfg. spec sheet) 30 MMBTU/hr	Design Heat Content 2,682 BTU/scf

Control Device Information

Type of Vapor Combustion Control?		
<input checked="" type="checkbox"/> Enclosed Combustion Device	<input type="checkbox"/> Elevated Flare	<input type="checkbox"/> Ground Flare
<input type="checkbox"/> Thermal Oxidizer		
Manufacturer: MRW Technologies Model: TBF-6.5-34-268500	Hours of operation per year? 8,760	

List the emission units whose emissions are controlled by this vapor control device (Emission Point ID# APC-COMB)

Emission Unit ID#	Emission Source Description	Emission Unit ID#	Emission Source Description
EU-TANKS-COND	Condensate Tanks	EU-LOAD-COND	Condensate Truck Loading
EU-TANKS-PW	Produced Water Tanks	EU-LOAD-PW	Produced Water Truck Loading

If this vapor combustor controls emissions from more than six (6) emission units, please attach additional pages.

Assist Type (Flares only)	Flare Height	Tip Diameter	Was the design per §60.18?
<input type="checkbox"/> Steam <input type="checkbox"/> Air <input type="checkbox"/> Pressure <input checked="" type="checkbox"/> Non	34 feet	6.5 feet	<input type="checkbox"/> Yes <input checked="" type="checkbox"/> No Provide determination.

Waste Gas Information

Maximum Waste Gas Flow Rate 187 (scfm)	Heat Value of Waste Gas Stream 2,682 BTU/ft ³	Exit Velocity of the Emissions Stream (ft/s)
-------------------------------------------	-------------------------------------------------------------	-------------------------------------------------

Provide an attachment with the characteristics of the waste gas stream to be burned.

Pilot Gas Information

Number of Pilot Lights 3	Fuel Flow Rate to Pilot Flame per Pilot 50 scfh	Heat Input per Pilot 45,250 BTU/hr	Will automatic re-ignition be used? <input checked="" type="checkbox"/> Yes <input type="checkbox"/> No
-----------------------------	----------------------------------------------------	---------------------------------------	------------------------------------------------------------------------------------------------------------

If automatic re-ignition is used, please describe the method. If the pilot flame is lost, the control system will automatically attempt to relight the pilot. If the re-ignition attempt fails, the pilot solenoid valve will automatically close and a local remote alarm signal will be generated to indicate loss of pilot flame.

Is pilot flame equipped with a monitor to detect the presence of the flame? <input checked="" type="checkbox"/> Yes <input type="checkbox"/> No	If Yes, what type? <input type="checkbox"/> Thermocouple <input type="checkbox"/> Infrared <input type="checkbox"/> Ultraviolet <input type="checkbox"/> Camera <input checked="" type="checkbox"/> Other: flame rod
-------------------------------------------------------------------------------------------------------------------------------------------------	-------------------------------------------------------------------------------------------------------------------------------------------------------------------------------------------------------------------------

Describe all operating ranges and maintenance procedures required by the manufacturer to maintain the warranty. *(If unavailable, please indicate).*

Additional information attached? Yes No
Please attach copies of manufacturer's data sheets, drawings, flame demonstration per §60.18 or §63.11(b) and performance testing.



Tank Battery Combustor Specification Sheet
MRW Technologies, Inc.
Combustor Model Number: TBF-6.5-34-268500

Expected Destruction Removal Efficiency (DRE):	98% or Greater of Non-Methane Hydrocarbons
Unit Size:	6.5-foot Diameter 34-Foot Overall Height
Design Heat Input:	30 MMBTU/HR
Design Flow Rates:	268,500 SCFD
Design Heat Content:	2682 BTU/SCF
Waste Gas Flame Arrestor:	Enardo
Pilot Type:	MRW Electric Ignition
Pilot Operation (Continuous/Intermittent):	Three (3) Continuous
Pilot Fuel Consumption:	150 SCFH or Less Total (50 SCFH per Pilot)
Pilot Monitoring Device:	Flame Rod
Automatic Re-Ignition:	Included
Remote Alarm Indication:	Included

Description of Control Scheme:

The Combustor pilots are monitored via flame rod. If one of the pilot flames are lost, the control system will automatically attempt to relight the pilot. If the re-ignition attempt fails, the pilot solenoid valve will automatically close and a local & remote alarm signal will be generated to indicate loss of pilot flame.

C O M B U S T I O N S Y S T E M S

Since flares do not lend themselves to conventional emission testing techniques, only a few attempts have been made to characterize flare emissions. Recent EPA tests using propylene as flare gas indicated that efficiencies of 98 percent can be achieved when burning an offgas with at least 11,200 kJ/m³ (300 Btu/ft³). The tests conducted on steam-assisted flares at velocities as low as 39.6 meters per minute (m/min) (130 ft/min) to 1140 m/min (3750 ft/min), and on air-assisted flares at velocities of 180 m/min (617 ft/min) to 3960 m/min (13,087 ft/min) indicated that variations in incoming gas flow rates have no effect on the combustion efficiency. Flare gases with less than 16,770 kJ/m³ (450 Btu/ft³) do not smoke.

Table 13.5-1 presents flare emission factors, and Table 13.5-2 presents emission composition data obtained from the EPA tests.¹ Crude propylene was used as flare gas during the tests. Methane was a major fraction of hydrocarbons in the flare emissions, and acetylene was the dominant intermediate hydrocarbon species. Many other reports on flares indicate that acetylene is always formed as a stable intermediate product. The acetylene formed in the combustion reactions may react further with hydrocarbon radicals to form polyacetylenes followed by polycyclic hydrocarbons.²

In flaring waste gases containing no nitrogen compounds, NO is formed either by the fixation of atmospheric nitrogen (N) with oxygen (O) or by the reaction between the hydrocarbon radicals present in the combustion products and atmospheric nitrogen, by way of the intermediate stages, HCN, CN, and OCN.² Sulfur compounds contained in a flare gas stream are converted to SO₂ when burned. The amount of SO₂ emitted depends directly on the quantity of sulfur in the flared gases.

Table 13.5-1 (English Units). EMISSION FACTORS FOR FLARE OPERATIONS^a

EMISSION FACTOR RATING: B

Component	Emission Factor (lb/10 ⁶ Btu)
Total hydrocarbons ^b	0.14
Carbon monoxide	0.37
Nitrogen oxides	0.068
Soot ^c	0 - 274

^a Reference 1. Based on tests using crude propylene containing 80% propylene and 20% propane.

^b Measured as methane equivalent.

^c Soot in concentration values: nonsmoking flares, 0 micrograms per liter (µg/L); lightly smoking flares, 40 µg/L; average smoking flares, 177 µg/L; and heavily smoking flares, 274 µg/L.

ATTACHMENT T: EMISSIONS CALCULATIONS

**SWN Production Company, LLC
John Hupp Pad
Summary of Criteria Air Pollutant Emissions**

Equipment	Unit ID	Emission Point ID	NOx		CO		Total VOC ¹		SO ₂		PM Total	
			lb/hr	TPY	lb/hr	TPY	lb/hr	TPY	lb/hr	TPY	lb/hr	TPY
145-hp Caterpillar G3306 NA Engine	EU-ENG1	EP-ENG1	0.32	1.40	0.64	2.80	0.31	1.36	<0.01	<0.01	0.02	0.11
145-hp Caterpillar G3306 NA Engine	EU-ENG2	EP-ENG2	0.32	1.40	0.64	2.80	0.31	1.36	<0.01	<0.01	0.02	0.11
1.0-mmBtu/hr GPU Burner	EU-GPU1	EP-GPU1	0.11	0.48	0.09	0.41	0.01	0.03	<0.01	<0.01	0.01	0.04
1.0-mmBtu/hr GPU Burner	EU-GPU2	EP-GPU2	0.11	0.48	0.09	0.41	0.01	0.03	<0.01	<0.01	0.01	0.04
1.0-mmBtu/hr GPU Burner	EU-GPU3	EP-GPU3	0.11	0.48	0.09	0.41	0.01	0.03	<0.01	<0.01	0.01	0.04
1.0-mmBtu/hr GPU Burner	EU-GPU4	EP-GPU4	0.11	0.48	0.09	0.41	0.01	0.03	<0.01	<0.01	0.01	0.04
1.0-mmBtu/hr GPU Burner	EU-GPU5	EP-GPU5	0.11	0.48	0.09	0.41	0.01	0.03	<0.01	<0.01	0.01	0.04
1.5-mmBtu/hr Stabilizer Heater	EU-SH1	EP-SH1	0.17	0.73	0.14	0.61	0.01	0.04	<0.01	<0.01	0.01	0.06
1.5-mmBtu/hr Stabilizer Heater	EU-SH2	EP-SH2	0.17	0.73	0.14	0.61	0.01	0.04	<0.01	<0.01	0.01	0.06
Five (5) 400-bbl Condensate Tanks Routed to Vapor Combustor	EU-TANKS-COND	APC-COMB	-	-	-	-	-	-	-	-	-	-
Five (5) 400-bbl Produced Water Tanks Routed to Vapor Combustor	EU-TANKS-PW	APC-COMB	-	-	-	-	-	-	-	-	-	-
Condensate Truck Loading w/ Vapor Return Routed to Combustor	EU-LOAD-COND	APC-COMB	-	-	-	-	7.61	33.33	-	-	-	-
Produced Water Truck Loading w/ Vapor Return Routed to Combustor	EU-LOAD-PW	APC-COMB	-	-	-	-	0.62	2.72	-	-	-	-
30.0-mmBtu/hr Vapor Combustor	APC-COMB	APC-COMB	4.14	18.13	8.27	36.20	7.77	34.04	-	-	0.09	0.37
Vapor Combustor Pilots	EU-PILOTS	APC-COMB	0.02	0.07	0.01	0.06	<0.01	<0.01	<0.01	<0.01	<0.01	<0.01
Fugitive Emissions	EU-FUG	EP-FUG	-	-	-	-	1.37	5.99	-	-	-	-
Fugitive Haul Road Emissions	EU-HR	EP-HR	-	-	-	-	-	-	-	-	2.11	6.92
Total =			5.68	24.87	10.30	45.11	18.04	79.01	0.01	0.03	2.31	7.80

Notes:

¹ Total VOC includes all constituents heavier than Propane (C3+), including hazardous air pollutants (HAP). Speciated HAP presented in following table.

SWN Production Company, LLC
 John Hupp Pad
 Summary of Hazardous Air Pollutants

Equipment	Unit ID	Estimated Emissions (lb/hr)									
		Acetalde- hyde	Acrolein	Benzene	Ethyl- benzene	Formalde- hyde	Methanol	n-Hexane	Toluene	Xylenes	Total HAP
145-hp Caterpillar G3306 NA Engine	EU-ENG1	<0.01	<0.01	<0.01	<0.01	0.09	<0.01	-	<0.01	<0.01	0.10
145-hp Caterpillar G3306 NA Engine	EU-ENG2	<0.01	<0.01	<0.01	<0.01	0.09	<0.01	-	<0.01	<0.01	0.10
1.0-mmBtu/hr GPU Burner	EU-GPU1	-	-	<0.01	-	<0.01	-	<0.01	<0.01	-	<0.01
1.0-mmBtu/hr GPU Burner	EU-GPU2	-	-	<0.01	-	<0.01	-	<0.01	<0.01	-	<0.01
1.0-mmBtu/hr GPU Burner	EU-GPU3	-	-	<0.01	-	<0.01	-	<0.01	<0.01	-	<0.01
1.0-mmBtu/hr GPU Burner	EU-GPU4	-	-	<0.01	-	<0.01	-	<0.01	<0.01	-	<0.01
1.0-mmBtu/hr GPU Burner	EU-GPU5	-	-	<0.01	-	<0.01	-	<0.01	<0.01	-	<0.01
1.5-mmBtu/hr Stabilizer Heater	EU-SH1	-	-	<0.01	-	<0.01	-	<0.01	<0.01	-	<0.01
1.5-mmBtu/hr Stabilizer Heater	EU-SH2	-	-	<0.01	-	<0.01	-	<0.01	<0.01	-	<0.01
Five (5) 400-bbl Condensate Tanks Routed to Vapor Combustor	EU-TANKS-COND	-	-	-	-	-	-	-	-	-	-
Five (5) 400-bbl Produced Water Tanks Routed to Vapor Combustor	EU-TANKS-PW	-	-	-	-	-	-	-	-	-	-
Condensate Truck Loading w/ Vapor Return Routed to Combustor	EU-LOAD-COND	-	-	0.01	0.03	-	-	0.37	0.03	0.09	0.52
Produced Water Truck Loading w/ Vapor Return Routed to Combustor	EU-LOAD-PW	-	-	<0.01	<0.01	-	-	0.03	<0.01	0.01	0.04
30.0-mmBtu/hr Vapor Combustor	APC-COMB	-	-	0.01	0.03	-	-	0.38	0.03	0.09	0.53
Vapor Combustor Pilots	EU-PILOTS	-	-	<0.01	-	<0.01	-	<0.01	<0.01	-	<0.01
Fugitive Emissions	EU-FUG	-	-	<0.01	<0.01	-	-	0.05	<0.01	0.01	0.07
Fugitive Haul Road Emissions	EU-HR	-	-	-	-	-	-	-	-	-	-
Total =		0.01	0.01	0.02	0.06	0.17	0.01	0.85	0.06	0.20	1.38

Continued on Next Page

SWN Production Company, LLC
 John Hupp Pad
 Summary of Hazardous Air Pollutants (Continued)

Equipment	Unit ID	Estimated Emissions (TPY)									
		Acetalde- hyde	Acrolein	Benzene	Ethyl- benzene	Formalde- hyde	Methanol	n-Hexane	Toluene	Xylenes	Total HAP
145-hp Caterpillar G3306 NA Engine	EU-ENG1	0.02	0.01	0.01	<0.01	0.38	0.02	-	<0.01	<0.01	0.44
145-hp Caterpillar G3306 NA Engine	EU-ENG2	0.02	0.01	0.01	<0.01	0.38	0.02	-	<0.01	<0.01	0.44
1.0-mmBtu/hr GPU Burner	EU-GPU1	-	-	<0.01	-	<0.01	-	0.01	<0.01	-	0.01
1.0-mmBtu/hr GPU Burner	EU-GPU2	-	-	<0.01	-	<0.01	-	0.01	<0.01	-	0.01
1.0-mmBtu/hr GPU Burner	EU-GPU3	-	-	<0.01	-	<0.01	-	0.01	<0.01	-	0.01
1.0-mmBtu/hr GPU Burner	EU-GPU4	-	-	<0.01	-	<0.01	-	0.01	<0.01	-	0.01
1.0-mmBtu/hr GPU Burner	EU-GPU5	-	-	<0.01	-	<0.01	-	0.01	<0.01	-	0.01
1.5-mmBtu/hr Stabilizer Heater	EU-SH1	-	-	<0.01	-	<0.01	-	0.01	<0.01	-	0.01
1.5-mmBtu/hr Stabilizer Heater	EU-SH2	-	-	<0.01	-	<0.01	-	0.01	<0.01	-	0.01
Five (5) 400-bbl Condensate Tanks Routed to Vapor Combustor	EU-TANKS-COND	-	-	-	-	-	-	-	-	-	-
Five (5) 400-bbl Produced Water Tanks Routed to Vapor Combustor	EU-TANKS-PW	-	-	-	-	-	-	-	-	-	-
Condensate Truck Loading w/ Vapor Return Routed to Combustor	EU-LOAD-COND	-	-	0.02	0.11	-	-	1.62	0.12	0.40	2.28
Produced Water Truck Loading w/ Vapor Return Routed to Combustor	EU-LOAD-PW	-	-	<0.01	0.01	-	-	0.13	0.01	0.03	0.19
30.0-mmBtu/hr Vapor Combustor	APC-COMB	-	-	0.03	0.12	-	-	1.66	0.12	0.41	2.32
Vapor Combustor Pilots	EU-PILOTS	-	-	<0.01	-	<0.01	-	<0.01	<0.01	-	<0.01
Fugitive Emissions	EU-FUG	-	-	<0.01	0.01	-	-	0.23	0.02	0.05	0.31
Fugitive Haul Road Emissions	EU-HR	-	-	-	-	-	-	-	-	-	-
Total =		0.03	0.03	0.07	0.25	0.76	0.03	3.71	0.27	0.89	6.05

SWN Production Company, LLC
 John Hupp Pad
 Summary of Greenhouse Gas Emissions - Metric Tons per Year (Tonnes)

Equipment	Unit ID	Carbon Dioxide (CO ₂)		Methane (CH ₄)		Methane (CH ₄) as CO ₂ Eq.		Nitrous Oxide (N ₂ O)		Nitrous Oxide (N ₂ O) as CO ₂ Eq.		Total CO ₂ + CO ₂ Eq. ¹	
		lb/hr	tonnes/yr	lb/hr	tonnes/yr	lb/hr	tonnes/yr	lb/hr	tonnes/yr	lb/hr	tonnes/yr	lb/hr	tonnes/yr
145-hp Caterpillar G3306 NA Engine	EU-ENG1	155.04	616.04	<0.01	0.01	0.07	0.27	<0.01	<0.01	0.08	0.33	155.19	616.64
145-hp Caterpillar G3306 NA Engine	EU-ENG2	155.04	616.04	<0.01	0.01	0.07	0.27	<0.01	<0.01	0.08	0.33	155.19	616.64
1.0-mmBtu/hr GPU Burner	EU-GPU1	116.98	464.80	<0.01	0.01	0.06	0.22	<0.01	<0.01	0.07	0.26	117.10	465.28
1.0-mmBtu/hr GPU Burner	EU-GPU2	116.98	464.80	<0.01	0.01	0.06	0.22	<0.01	<0.01	0.07	0.26	117.10	465.28
1.0-mmBtu/hr GPU Burner	EU-GPU3	116.98	464.80	<0.01	0.01	0.06	0.22	<0.01	<0.01	0.07	0.26	117.10	465.28
1.0-mmBtu/hr GPU Burner	EU-GPU4	116.98	464.80	<0.01	0.01	0.06	0.22	<0.01	<0.01	0.07	0.26	117.10	465.28
1.0-mmBtu/hr GPU Burner	EU-GPU5	116.98	464.80	<0.01	0.01	0.06	0.22	<0.01	<0.01	0.07	0.26	117.10	465.28
1.5-mmBtu/hr Stabilizer Heater	EU-SH1	175.47	697.21	<0.01	0.01	0.08	0.33	<0.01	<0.01	0.10	0.39	175.65	697.93
1.5-mmBtu/hr Stabilizer Heater	EU-SH2	175.47	697.21	<0.01	0.01	0.08	0.33	<0.01	<0.01	0.10	0.39	175.65	697.93
Five (5) 400-bbl Condensate Tanks Routed to Vapor Combustor	EU-TANKS-COND	-	-	-	-	-	-	-	-	-	-	-	-
Five (5) 400-bbl Produced Water Tanks Routed to Vapor Combustor	EU-TANKS-PW	-	-	-	-	-	-	-	-	-	-	-	-
Condensate Truck Loading w/ Vapor Return Routed to Combustor	EU-LOAD-COND	<0.01	0.02	0.86	3.43	21.61	85.87	-	-	-	-	21.61	85.88
Produced Water Truck Loading w/ Vapor Return Routed to Combustor	EU-LOAD-PW	0.01	0.02	1.06	4.21	26.52	105.37	-	-	-	-	26.53	105.40
30.0-mmBtu/hr Vapor Combustor	APC-COMB	3,509.31	13,944.14	0.07	0.26	1.65	6.57	0.01	0.03	1.97	7.83	3,512.94	13,958.54
Vapor Combustor Pilots	EU-PILOTS	15.88	63.10	<0.01	<0.01	0.01	0.03	<0.01	<0.01	0.01	0.04	15.90	63.16
Fugitive Emissions	EU-FUG	0.01	0.02	0.97	3.87	24.36	96.78	-	-	-	-	24.36	96.80
Fugitive Haul Road Emissions	EU-HR	-	-	-	-	-	-	-	-	-	-	-	-
Total =		4,771.10	18,957.81	2.99	11.88	74.73	296.92	0.01	0.04	2.67	10.61	4,848.50	19,265.34

Notes:

¹ CO₂ Equivalent = Pollutant times GWP multiplier. 40 CFR 98 Table A-1, Global Warming Potential (GWP) multiplier (100-Year Time Horizon): CO₂ = 1, CH₄ = 25, N₂O = 298

² Per API Compendium (2009) Chapter 5: Because most of the CH₄ and CO₂ emissions from storage tanks occur as a result of flashing (which is controlled by the vapor combustor in this case), working and breathing loss emissions of these gases are very small in production and virtually non-existent in the downstream segments. Vapors from the tanks are routed to the vapor combustor at this site. Therefore, GHG emissions from the condensate and produced water tanks are assumed to be negligible.

SWN Production Company, LLC
 John Hupp Pad
 Summary of Greenhouse Gas Emissions - Short Tons per Year (Tons)

Equipment	Unit ID	Carbon Dioxide (CO ₂)		Methane (CH ₄)		Methane (CH ₄) as CO ₂ Eq.		Nitrous Oxide (N ₂ O)		Nitrous Oxide (N ₂ O) as CO ₂ Eq.		Total CO ₂ + CO ₂ Eq. ¹	
		lb/hr	tons/yr ²	lb/hr	tons/yr ²	lb/hr	tons/yr	lb/hr	tons/yr ²	lb/hr	tons/yr	lb/hr	tons/yr
145-hp Caterpillar G3306 NA Engine	EU-ENG1	155.04	679.06	<0.01	0.01	0.07	0.30	<0.01	<0.01	0.08	0.36	155.19	679.73
145-hp Caterpillar G3306 NA Engine	EU-ENG2	155.04	679.06	<0.01	0.01	0.07	0.30	<0.01	<0.01	0.08	0.36	155.19	679.73
1.0-mmBtu/hr GPU Burner	EU-GPU1	116.98	512.36	<0.01	0.01	0.06	0.24	<0.01	<0.01	0.07	0.29	117.10	512.89
1.0-mmBtu/hr GPU Burner	EU-GPU2	116.98	512.36	<0.01	0.01	0.06	0.24	<0.01	<0.01	0.07	0.29	117.10	512.89
1.0-mmBtu/hr GPU Burner	EU-GPU3	116.98	512.36	<0.01	0.01	0.06	0.24	<0.01	<0.01	0.07	0.29	117.10	512.89
1.0-mmBtu/hr GPU Burner	EU-GPU4	116.98	512.36	<0.01	0.01	0.06	0.24	<0.01	<0.01	0.07	0.29	117.10	512.89
1.0-mmBtu/hr GPU Burner	EU-GPU5	116.98	512.36	<0.01	0.01	0.06	0.24	<0.01	<0.01	0.07	0.29	117.10	512.89
1.5-mmBtu/hr Stabilizer Heater	EU-SH1	175.47	768.54	<0.01	0.01	0.08	0.36	<0.01	<0.01	0.10	0.43	175.65	769.33
1.5-mmBtu/hr Stabilizer Heater	EU-SH2	175.47	768.54	<0.01	0.01	0.08	0.36	<0.01	<0.01	0.10	0.43	175.65	769.33
Five (5) 400-bbl Condensate Tanks Routed to Vapor Combustor	EU-TANKS-COND	-	-	-	-	-	-	-	-	-	-	-	-
Five (5) 400-bbl Produced Water Tanks Routed to Vapor Combustor	EU-TANKS-PW	-	-	-	-	-	-	-	-	-	-	-	-
Condensate Truck Loading w/ Vapor Return Routed to Combustor	EU-LOAD-COND	<0.01	0.02	0.86	3.79	21.61	94.65	-	-	-	-	21.61	94.67
Produced Water Truck Loading w/ Vapor Return Routed to Combustor	EU-LOAD-PW	0.01	0.02	1.06	4.65	26.52	116.16	-	-	-	-	26.53	116.18
30.0-mmBtu/hr Vapor Combustor	APC-COMB	3,509.31	15,370.78	0.07	0.29	1.65	7.24	0.01	0.03	1.97	8.63	3,512.94	15,386.66
Vapor Combustor Pilots	EU-PILOTS	15.88	69.55	<0.01	<0.01	0.01	0.03	<0.01	<0.01	0.01	0.04	15.90	69.62
Fugitive Emissions	EU-FUG	0.01	0.02	0.97	4.27	24.36	106.68	-	-	-	-	24.36	106.70
Fugitive Haul Road Emissions	EU-HR	-	-	-	-	-	-	-	-	-	-	-	-
Total =		4,771.10	20,897.41	2.99	13.09	74.73	327.30	0.01	0.04	2.67	11.69	4,848.50	21,236.40

Notes:

¹ CO₂ Equivalent = Pollutant times GWP multiplier. 40 CFR 98 Table A-1, Global Warming Potential (GWP) multiplier (100-Year Time Horizon): CO₂ = 1, CH₄ = 25, N₂O = 298

² EPA and API GHG calculation methodologies calculate emissions in metric tons (tonnes). These values have been converted to short tons for consistency with permitting threshold units.

³ Per API Compendium (2009) Chapter 5: Because most of the CH₄ and CO₂ emissions from storage tanks occur as a result of flashing (which is controlled by the vapor combustor in this case), working and breathing loss emissions of these gases are very small in production and virtually non-existent in the downstream segments. Vapors from the tanks are routed to the vapor combustor at this site. Therefore, GHG emissions from the condensate and produced water tanks are assumed to be negligible.

**SWN Production Company, LLC
John Hupp Pad
Engine Emissions Calculations - Criteria Air Pollutants**

Equipment Information

Unit ID:	<u>EU-ENG1</u>	<u>EU-ENG2</u>
Emission Point ID:	EP-ENG1	EP-ENG2
Make:	Caterpillar	Caterpillar
Model:	G3306 NA	G3306 NA
Design Class:	4S-RB	4S-RB
Controls:	NSCR	NSCR
Horsepower (hp):	145	145
Fuel Use (Btu/hp-hr):	8,625	8,625
Fuel Use (scfh):	1,382	1,382
Annual Fuel Use (mmscf):	12.11	12.11
Fuel Use (mmBtu/hr):	1.25	1.25
Exhaust Flow (acfm):	678	678
Exhaust Temp (°F):	1,101	1,101
Manufacture Date:	after 1/1/2011	after 1/1/2011
Operating Hours:	8,760	8,760
Fuel Heating Value (Btu/scf):	905	905

Uncontrolled Manufacturer Emission Factors¹

NOx (g/hp-hr):	13.47	13.47
CO (g/hp-hr):	13.47	13.47
NMNEHC/VOC (g/hp-hr):	0.22	0.22
Total VOC = NMNEHC + HCHO (g/hp-hr):	0.49	0.49

Post-Catalyst Emission Factors

NOx Control Eff. %	92.58%	92.58%
CO Control Eff. %	85.15%	85.15%
NOx (g/hp-hr):	1.00	1.00
CO (g/hp-hr):	2.00	2.00
NMNEHC/VOC (g/hp-hr):	0.70	0.70
Total VOC = NMNEHC + HCHO (g/hp-hr):	0.97	0.97

Uncontrolled Criteria Air Pollutant Emissions

	Unit ID:	<u>EU-ENG1</u>	<u>EU-ENG2</u>		
Pollutant	lb/hr	TPY	lb/hr	TPY	
NOx	4.31	18.86	4.31	18.86	
CO	4.31	18.86	4.31	18.86	
NMNEHC/VOC (does not include HCHO)	0.07	0.31	0.07	0.31	
Total VOC (includes HCHO)	0.16	0.69	0.16	0.69	
SO ₂	<0.01	<0.01	<0.01	<0.01	
PM _{10/2.5}	0.01	0.05	0.01	0.05	
PM _{COND}	0.01	0.05	0.01	0.05	
PM _{TOT}	0.02	0.11	0.02	0.11	

**SWN Production Company, LLC
John Hupp Pad
Engine Emissions Calculations - Criteria Air Pollutants (Continued)**

Proposed Criteria Air Pollutant Emissions²

Pollutant	lb/hr	TPY	lb/hr	TPY
NOx	0.32	1.40	0.32	1.40
CO	0.64	2.80	0.64	2.80
NMNEHC/VOC (does not include HCHO)	0.22	0.98	0.22	0.98
Total VOC (includes HCHO)	0.31	1.36	0.31	1.36
SO ₂	<0.01	<0.01	<0.01	<0.01
PM _{10/2.5}	0.01	0.05	0.01	0.05
PM _{COND}	0.01	0.05	0.01	0.05
PM _{TOT}	0.02	0.11	0.02	0.11

AP-42 Emission Factors (lb/mmBtu)³

4S-RB

Pollutant	3.2-3 (7/00)
SO ₂	5.88E-04
PM _{10/2.5}	9.50E-03
PM _{COND}	9.91E-03
PM _{TOT}	1.94E-02

Notes:

¹ Uncontrolled emission factors based on engine manufacturer data. Per Caterpillar, NMNEHC emission factor does not include formaldehyde (HCHO); therefore, NMNEHC and HCHO factors have been added to demonstrate total uncontrolled VOC. All other pollutants calculated using AP-42.

² Post-catalyst emission factors for the Caterpillar engine are based on catalyst manufacturer data and/or NSPS Subpart JJJJ limits, if applicable. Per NSPS Subpart JJJJ, VOC limit does not include HCHO; therefore, HCHO emissions have been added to the NSPS JJJJ VOC emission rates for demonstration purposes only.

³ Per AP-42, all particulate matter (PM) from combustion of natural gas (total, condensable and filterable PM) is presumed <1 micrometer in diameter.

**SWN Production Company, LLC
John Hupp Pad
Engine Emissions Calculations - Hazardous Air Pollutants**

Equipment Information

Unit ID:	<u>EU-ENG1</u>	<u>EU-ENG2</u>
Emission Point ID:	EP-ENG1	EP-ENG2
Make:	Caterpillar	Caterpillar
Model:	G3306 NA	G3306 NA
Design Class:	4S-RB	4S-RB
Controls:	NSCR	NSCR
Horsepower (hp):	145	145.0
Fuel Use (Btu/hp-hr):	8,625	8,625
Fuel Use (scfh):	1,382	1,382
Annual Fuel Use (mmscf):	12.11	12.11
Fuel Use (mmBtu/hr):	1.25	1.25
Exhaust Flow (acfm):	678	678
Exhaust Temp (°F):	1,101	1,101
Operating Hours:	8,760	8,760

Proposed HAP Emissions^{1,2}

Unit ID: **EU-ENG1** **EU-ENG2**

Pollutant	lb/hr	TPY	lb/hr	TPY
Acetaldehyde	<0.01	0.02	<0.01	0.02
Acrolein	<0.01	0.01	<0.01	0.01
Benzene	<0.01	0.01	<0.01	0.01
Ethylbenzene	<0.01	<0.01	<0.01	<0.01
Formaldehyde	0.09	0.38	0.09	0.38
Methanol	<0.01	0.02	<0.01	0.02
Toluene	<0.01	<0.01	<0.01	<0.01
Xylenes	<0.01	<0.01	<0.01	<0.01
Total HAP =	0.10	0.44	0.10	0.44

AP-42 Emission Factors (lb/mmBtu)

4S-RB

Pollutant	3.2-3 (7/00)
Acetaldehyde	2.79E-03
Acrolein	2.63E-03
Benzene	1.58E-03
Ethylbenzene	2.18E-05
Methanol	3.06E-03
Toluene	5.58E-04
Xylenes	1.95E-04

Notes:

¹ Manuf. data for uncontrolled Caterpillar G3306 HCHO emissions (g/hp-hr): 0.27

² For conservative estimate, no reduction taken for any HAP .

**SWN Production Company, LLC
John Hupp Pad
Engine Emissions Calculations - Greenhouse Gases**

Equipment Information

	<u>EU-ENG1</u>	<u>EU-ENG2</u>
Unit ID:	EP-ENG1	EP-ENG2
Emission Point ID:	EP-ENG1	EP-ENG2
Make:	Caterpillar	Caterpillar
Model:	G3306 NA	G3306 NA
Design Class:	4S-RB	4S-RB
Horsepower (hp):	145	145.0
Capacity (kW):	NA	NA
Fuel Use (Btu/hp-hr):	8,625	8,625
Fuel Use (Btu/kW-hr):	NA	NA
Fuel Use (scfh):	1,382	1,382
Fuel Use (mmBtu/hr):	1.25	1.25
Exhaust Flow (acfm):	678	678
Exhaust Temp (°F):	1,101	1,101
Operating Hours:	8,760	8,760

Manufacturer Emission Factors (g/hp-hr)¹

CO ₂ =	485	485
-------------------	-----	-----

Greenhouse Gas (GHG) Emissions¹

Pollutant	lb/hr	tonnes/yr	lb/hr	tonnes/yr
CO ₂	155.04	616.04	155.04	616.04
CH ₄	<0.01	0.01	<0.01	0.01
N ₂ O	<0.01	<0.01	<0.01	<0.01
CH ₄ as CO ₂ e	0.07	0.27	0.07	0.27
N ₂ O as CO ₂ e	0.08	0.33	0.08	0.33
Total CO₂ + CO₂e =	155.19	616.64	155.19	616.64

40 CFR 98 Tables ENG-1 Emission Factors (kg/mmBtu)²

Carbon Dioxide (CO ₂)	53.06
Methane (CH ₄)	1.00E-03
Nitrous Oxide (N ₂ O)	1.00E-04

Notes:

¹ Caterpillar manufacturer data used to estimate CO₂ emissions for the Caterpillar engine. All other emissions estimated using EPA data. Conversion to short tons (tons) found in site-wide Summary of Greenhouse Gases - Short Tons per Year (tons) table.

² CO₂e = CO₂ equivalent (Pollutant times GWP multiplier):

40 CFR 98 Table A-1, Global Warming Potential (GWP) multiplier: CO₂ = 1, CH₄ = 25, N₂O = 298

**SWN Production Company, LLC
 John Hupp Pad
 Gas Production Unit Burner Emissions Calculations - Criteria Air Pollutants**

Equipment Information

Unit ID:	<u>EU-GPU1 - EU-GPU5 (EACH)</u>
Emission Point ID:	EP-GPU1 - EP-GPU5
Description:	Gas Production Unit Burner
Number of Units:	5
Burner Design (mmBtu/hr):	1.0
Fuel HHV (Btu/scf):	905
Annual Fuel Use (mmscf):	9.68
Annual Operating Hours:	8,760

Criteria Air Pollutant Emissions

Unit ID: **EU-GPU1 - EU-GPU5 (EACH)**

Pollutant	lb/hr	TPY
NO _x	0.11	0.48
CO	0.09	0.41
VOC	0.01	0.03
SO ₂	<0.01	<0.01
PM _{10/2.5}	0.01	0.03
PM _{COND}	<0.01	0.01
PM _{TOT}	0.01	0.04

AP-42 Emission Factors for Units <100 mmBtu/hr (lb/mmscf)¹

Pollutant	1.4-1, -2 (7/98)
NO _x	100.0
CO	84.0
VOC	5.5
SO ₂	0.6
PM _{10/2.5}	5.7
PM _{COND}	1.9
PM _{TOT}	7.6

Notes:

¹ All PM (total, condensable and filterable) is assumed to be <1 micrometer in diameter. Total PM is the sum of filterable PM and condensable PM.

**SWN Production Company, LLC
 John Hupp Pad
 Gas Production Unit Burner Emissions Calculations - Hazardous Air Pollutants**

Equipment Information

Unit ID: **EU-GPU1 - EU-GPU5 (EACH)**
 Emission Point ID: EP-GPU1 - EP-GPU5
 Description: Gas Production Unit Burner
 Number of Units: 5
 Burner Design (mmBtu/hr): 1.0
 Fuel HHV (Btu/scf): 905
 Annual Fuel Use (mmscf): 9.68
 Annual Operating Hours: 8,760

Hazardous Air Pollutant Emissions

Unit ID: **EU-GPU1 - EU-GPU5 (EACH)**

Pollutant	lb/hr	TPY
n-Hexane	<0.01	0.01
Formaldehyde	<0.01	<0.01
Benzene	<0.01	<0.01
Toluene	<0.01	<0.01
Total HAP =	<0.01	0.01

AP-42 Emission Factors (lb/mmscf)

Pollutant	1.4-3 (7/98)
n-Hexane	1.80E+00
Formaldehyde	7.50E-02
Benzene	2.10E-03
Toluene	3.40E-03

**SWN Production Company, LLC
 John Hupp Pad
 Gas Production Unit Burner Emissions Calculations - Greenhouse Gases**

Equipment Information

Unit ID:	<u>EU-GPU1 - EU-GPU5 (EACH)</u>
Emission Point ID:	EP-GPU1 - EP-GPU5
Description:	Gas Production Unit Burner
Number of Units:	5
Burner Design (mmBtu/hr):	1.0
Fuel HHV (Btu/scf):	905
Annual Fuel Use (mmscf):	9.68
Annual Operating Hours:	8,760

Greenhouse Gas (GHG) Emissions¹

Unit ID: **EU-GPU1 - EU-GPU5 (EACH)**

Pollutant	lb/hr	tonnes/yr
CO ₂	116.98	464.80
CH ₄	<0.01	0.01
N ₂ O	<0.01	<0.01
CH ₄ as CO ₂ e	0.06	0.22
N ₂ O as CO ₂ e	0.07	0.26
Total CO₂ + CO₂e =	117.10	465.28

40 CFR 98 Tables C-1 and C-2 Emission Factors (kg/mmBtu)²

Carbon Dioxide (CO ₂)	53.06
Methane (CH ₄)	1.00E-03
Nitrous Oxide (N ₂ O)	1.00E-04

Notes:

¹ Conversion to short tons (tons) found in site-wide Summary of Greenhouse Gases - Short Tons per Year (tons) table.

² CO₂e = CO₂ equivalent (Pollutant times GWP multiplier):

40 CFR 98 Table A-1, Global Warming Potential (GWP) multiplier: CO₂ = 1, CH₄ = 25, N₂O = 298

**SWN Production Company, LLC
 John Hupp Pad
 Stabilizer Heater Emissions Calculations - Criteria Air Pollutants**

Equipment Information

Unit ID:	<u>EU-SH1 - EU-SH2 (EACH)</u>
Emission Point ID:	EP-SH1 - EP-SH2
Description:	Stabilizer Heater
Number of Units:	2
Burner Design (mmBtu/hr):	1.5
Fuel HHV (Btu/scf):	905
Annual Fuel Use (mmscf):	14.52
Annual Operating Hours:	8,760

Criteria Air Pollutant Emissions

Unit ID: **EU-SH1 - EU-SH2 (EACH)**

Pollutant	lb/hr	TPY
NO _x	0.17	0.73
CO	0.14	0.61
VOC	0.01	0.04
SO ₂	<0.01	<0.01
PM _{10/2.5}	0.01	0.04
PM _{COND}	<0.01	0.01
PM _{TOT}	0.01	0.06

AP-42 Emission Factors for Units <100 mmBtu/hr (lb/mmscf)¹

Pollutant	1.4-1, -2 (7/98)
NO _x	100.0
CO	84.0
VOC	5.5
SO ₂	0.6
PM _{10/2.5}	5.7
PM _{COND}	1.9
PM _{TOT}	7.6

Notes:

¹ All PM (total, condensable and filterable) is assumed to be <1 micrometer in diameter. Total PM is the sum of filterable PM and condensable PM.

**SWN Production Company, LLC
 John Hupp Pad
 Stabilizer Heater Emissions Calculations - Hazardous Air Pollutants**

Equipment Information

Unit ID: **EU-SH1 - EU-SH2 (EACH)**
 Emission Point ID: EP-SH1 - EP-SH2
 Description: Stabilizer Heater
 Number of Units: 2
 Burner Design (mmBtu/hr): 1.5
 Fuel HHV (Btu/scf): 905
 Annual Fuel Use (mmscf): 14.52
 Annual Operating Hours: 8,760

Hazardous Air Pollutant Emissions

Unit ID: **EU-SH1 - EU-SH2 (EACH)**

Pollutant	lb/hr	TPY
n-Hexane	<0.01	0.01
Formaldehyde	<0.01	<0.01
Benzene	<0.01	<0.01
Toluene	<0.01	<0.01
Total HAP =	<0.01	0.01

AP-42 Emission Factors (lb/mmscf)

Pollutant	1.4-3 (7/98)
n-Hexane	1.80E+00
Formaldehyde	7.50E-02
Benzene	2.10E-03
Toluene	3.40E-03

**SWN Production Company, LLC
 John Hupp Pad
 Stabilizer Heater Emissions Calculations - Greenhouse Gases**

Equipment Information

Unit ID:	<u>EU-SH1 - EU-SH2 (EACH)</u>
Emission Point ID:	EP-SH1 - EP-SH2
Description:	Stabilizer Heater
Number of Units:	2
Burner Design (mmBtu/hr):	1.5
Fuel HHV (Btu/scf):	905
Annual Fuel Use (mmscf):	14.52
Annual Operating Hours:	8,760

Greenhouse Gas (GHG) Emissions¹

Unit ID: **EU-SH1 - EU-SH2 (EACH)**

Pollutant	lb/hr	tonnes/yr
CO ₂	175.47	697.21
CH ₄	<0.01	0.01
N ₂ O	<0.01	<0.01
CH ₄ as CO ₂ e	0.08	0.33
N ₂ O as CO ₂ e	0.10	0.39
Total CO₂ + CO₂e =	175.65	697.93

40 CFR 98 Tables C-1 and C-2 Emission Factors (kg/mmBtu)²

Carbon Dioxide (CO ₂)	53.06
Methane (CH ₄)	1.00E-03
Nitrous Oxide (N ₂ O)	1.00E-04

Notes:

¹ Conversion to short tons (tons) found in site-wide Summary of Greenhouse Gases - Short Tons per Year (tons) table.

² CO₂e = CO₂ equivalent (Pollutant times GWP multiplier):

40 CFR 98 Table A-1, Global Warming Potential (GWP) multiplier: CO₂ = 1, CH₄ = 25, N₂O = 298

**SWN Production Company, LLC
John Hupp Pad
Storage Tank Emissions - Criteria Air Pollutants**

Tank Information

Unit ID:	<u>EU-TANKS-COND</u>	<u>EU-TANKS-PW</u>
Emission Point ID:	APC-COMB	APC-COMB
Contents: ^{1,3}	Condensate	Produced Water
Number of Tanks:	5	5
Capacity (bbl) - Per Tank:	400	400
Capacity (gal) - Per Tank:	16,800	16,800
Total:		
Total Throughput (bbl/yr):	593,680	728,569
Total Throughput (gal/yr):	24,934,552	30,599,906
Total Throughput (bbl/d):	1,627	1,996
Per Tank:		
Throughput (bbl/yr):	118,736	145,714
Throughput (gal/yr):	4,986,910	6,119,981
Throughput (bbl/d):	325	399
Turnovers:	1,484.20	1,821.42
Tank Vapor Capture Efficiency:	100%	100%
Captured Vapors Routed to:	Vapor Combustor	Vapor Combustor

Uncontrolled Storage Tank Emissions

Unit ID: **EU-TANKS-COND** **EU-TANKS-PW**

Emissions	lb/hr	TPY	lb/hr	TPY
Working Losses	11.89	52.06	0.06	0.27
Breathing Losses	16.05	70.29	0.03	0.13
Flashing Losses ²	339.04	1,485.00	2.26	9.92
Total VOC =	366.97	1,607.35	2.35	10.31

Controlled Storage Tank Emissions³

Unit ID: **EU-TANKS-COND** **EU-TANKS-PW**

Emissions	lb/hr	TPY	lb/hr	TPY
Working Losses	0.24	1.04	<0.01	0.01
Breathing Losses	0.32	1.41	<0.01	<0.01
Flashing Losses	6.78	29.70	0.05	0.20
Total VOC =	7.34	32.15	0.05	0.21
Per Tank =	1.47	6.43	0.01	0.04

Notes:

¹ Produced water tanks assumed to contain 99% produced water and 1% condensate.

² Tank working, breathing, and flashing emissions were calculated using Promax process simulation. Reports located in Attachment L. Uncontrolled tank working/breathing/flashing emissions will be routed to a vapor combustor with 100% capture efficiency.

³ Controlled tank emissions are shown for reference only.

SWN Production Company, LLC
 John Hupp Pad
 Storage Tank Emissions - Hazardous Air Pollutants

Uncontrolled Storage Tank Emissions

Unit ID: EU-TANKS-COND EU-TANKS-PW

Pollutant	lb/hr	TPY	lb/hr	TPY
Total VOC = ^{1,2}	366.97	1,607.35	2.35	10.31
n-Hexane	17.85	78.19	0.11	0.50
Benzene	0.27	1.18	<0.01	0.01
Toluene	1.29	5.67	0.01	0.04
Ethylbenzene	1.26	5.51	0.01	0.04
Xylenes	4.38	19.19	0.03	0.12
Total HAP =	25.06	109.75	0.16	0.70

Controlled Storage Tank Emissions³

Unit ID: EU-TANKS-COND EU-TANKS-PW

Pollutant	lb/hr	TPY	lb/hr	TPY
Total VOC = ¹	7.34	32.15	0.05	0.21
n-Hexane	0.36	1.56	<0.01	0.01
Benzene	0.01	0.02	<0.01	<0.01
Toluene	0.03	0.11	<0.01	<0.01
Ethylbenzene	0.03	0.11	<0.01	<0.01
Xylenes	0.09	0.38	<0.01	<0.01
Total HAP =	0.50	2.19	<0.01	0.01

Estimated HAP Composition (% by Weight)⁴

Pollutant	Wt%
n-Hexane	4.865%
Benzene	0.074%
Toluene	0.353%
Ethylbenzene	0.343%
Xylenes	1.194%
Total HAP =	6.828%

Notes:

¹ VOC emissions calculated in Criteria Air Pollutant calculations.

² Uncontrolled tank working/breathing/flashing emissions are controlled by a vapor combustor with 100% capture efficiency.

³ Controlled tank emissions are shown for reference only.

⁴ Speciated liquids analysis located in Fugitive Emissions Calculations. HAP weight % calculated as % of total hydrocarbons in the sample. All HAP assumed to volatilize from liquids for most conservative emissions estimate.

**SWN Production Company, LLC
 John Hupp Pad
 Condensate Truck Loading Emissions - Criteria and Hazardous Air Pollutants**

Loading Information

Unit ID: **EU-LOAD-COND**
 Emission Point ID: APC-COMB
 Fill Method: Submerged
 Type of Service: Dedicated
 Mode of Operation: Normal
 Saturation Factor: 0.6
 Em. Factor (lb/1000 gal): ¹ 9.59
 Throughput (1000 gal): 24,934.55
 Control Type: Vapor Return/Combustion
 Vapor Capture Efficiency: ¹ 70%
 Average Fill Rate (gal/hr): 7,500
 Captured Vapors Routed to: Vapor Combustor
 VOC Weight %: 92.90%

13.6828	= P, True vapor pressure of liquid loaded (max. psia)
53.41	= M, Molecular weight of vapor (lb/lb-mol)
109.55	= T, Temperature of bulk liquid loaded (average °F)
569.545	= T, Temperature of bulk liquid loaded (°F + 460 = °R)

Uncontrolled Loading Emissions²

Pollutant	Max. lb/hr	Avg. lb/hr	TPY
VOC =	66.84	25.37	111.11
n-Hexane	3.25	1.23	5.41
Benzene	0.05	0.02	0.08
Toluene	0.24	0.09	0.39
Ethylbenzene	0.23	0.09	0.38
Xylenes	0.80	0.30	1.33
Total HAP =	4.56	1.73	7.59

Uncaptured Loading Emissions²

Pollutant	Max. lb/hr	Avg. lb/hr	TPY
VOC =	20.05	7.61	33.33
n-Hexane	0.98	0.37	1.62
Benzene	0.01	0.01	0.02
Toluene	0.07	0.03	0.12
Ethylbenzene	0.07	0.03	0.11
Xylenes	0.24	0.09	0.40
Total HAP =	1.37	0.52	2.28

**SWN Production Company, LLC
 John Hupp Pad
 Condensate Truck Loading Emissions - Criteria and Hazardous Air Pollutants (Continued)**

Estimated HAP Composition (% by Weight)³

Pollutant	Wt%
n-Hexane	4.865%
Benzene	0.074%
Toluene	0.353%
Ethylbenzene	0.343%
Xylenes	1.194%
Total HAP =	6.828%

Notes:

¹ Uncontrolled emissions that are captured by the collection system are routed to a vapor combustor. Per AP-42 5.2-6, 70% capture efficiency can be assumed for trucks not subject to NSPS. Uncaptured emissions shown represent those not captured by the collection system or controlled by the vapor combustor.

² Maximum lb/hr based on average hourly truck loading rate. Average lb/hr based on TPY conversion assuming continuous operation.

³ Speciated liquids analysis located in Fugitive Emissions Calculations. HAP weight % calculated as % of total hydrocarbons in the sample. All HAP assumed to volatilize from liquids for most conservative emissions estimate.

**SWN Production Company, LLC
 John Hupp Pad
 Condensate Truck Loading Emissions - Greenhouse Gases**

Loading Information

Unit ID:	<u>EU-LOAD-COND</u>
Emission Point ID:	APC-COMB
Fill Method:	Submerged
Type of Service:	Dedicated
Mode of Operation:	Normal
TOC Em. Factor (tonne/10 ⁶ gal): ¹	0.91
Throughput (10 ⁶ gal):	24.935
Control Type:	Vapor Return/Combustion
Vapor Capture Efficiency: ²	70.00%
Average Fill Rate (gal/hr):	7,500
Captured Vapors Routed to:	Vapor Combustor

Analysis CH ₄ wt% =	50.45623%
Analysis CO ₂ wt% =	0.26610%

Uncontrolled Loading Emissions^{3,4}

Pollutant	Max. lb/hr	Avg. lb/hr	tonnes/yr	tons/yr
CH ₄	7.59	2.88	11.45	12.62
CH ₄ as CO ₂ e	189.80	72.03	286.22	315.50
CO ₂	0.04	0.02	0.06	0.07
Total CO₂ + CO₂e =	189.84	72.05	286.28	315.57

Uncaptured Loading Emissions^{3,4}

Pollutant	Max. lb/hr	Avg. lb/hr	tonnes/yr	tons/yr
CH ₄	2.28	0.86	3.43	3.79
CH ₄ as CO ₂ e	56.94	21.61	85.87	94.65
CO ₂	0.01	<0.01	0.02	0.02
Total CO₂ + CO₂e =	56.95	21.61	85.88	94.67

**SWN Production Company, LLC
 John Hupp Pad
 Condensate Truck Loading Emissions - Greenhouse Gases (Continued)**

API Compendium Table 5-12

Loading Type	Emission Factor (tonne TOC/10⁶ gal)
Rail/Truck - Submerged Loading - Dedicated Normal Service	0.91
Rail/Truck - Submerged Loading - Vapor Balance Service	1.51
Rail/Truck - Splash Loading - Dedicated Normal Service	2.20
Rail/Truck - Splash Loading - Vapor Balance Service	1.51
Marine Loading - Ships/Ocean Barges	0.28
Marine Loading - Barges	0.45

Notes:

¹ API Compendium of Greenhouse Gas Emissions Methodologies for the Oil and Gas Industry, Table 5-12.

² Uncontrolled emissions that are captured by the collection system are routed to a vapor combustor. Per AP-42 5.2-6, 70% capture efficiency can be assumed for trucks not subject to NSPS. Uncaptured emissions shown represent those not captured by the collection system or controlled by the vapor combustor.

³ Maximum lb/hr based on average hourly truck loading rate. Average lb/hr based on TPY conversion assuming continuous operation.

⁴ CO₂e = CO₂ equivalent (Pollutant times GWP multiplier):

40 CFR 98 Table A-1, Global Warming Potential (GWP) multiplier: CO₂ = 1, CH₄ = 25

**SWN Production Company, LLC
 John Hupp Pad
 Produced Water Truck Loading Emissions - Criteria and Hazardous Air Pollutants**

Loading Information

Unit ID: **EU-LOAD-PW**
 Emission Point ID: APC-COMB
 Fill Method: Submerged
 Type of Service: Dedicated
 Mode of Operation: Normal
 Saturation Factor: 0.6
 Em. Factor (lb/1000 gal): ¹ 4.41
 Throughput (1000 gal): 30,599.91
 Control Type: Vapor Return/Combustion
 Vapor Capture Efficiency: ¹ 70%
 Average Fill Rate (gal/hr): 7,500
 Captured Vapors Routed to: Vapor Combustor
 VOC Weight %: 13.42%

13.4335	= P, True vapor pressure of liquid loaded (max. psia)
22.86	= M, Molecular weight of vapor (lb/lb-mol)
60.35	= T, Temperature of bulk liquid loaded (average °F)
520.3459	= T, Temperature of bulk liquid loaded (°F + 460 = °R)

Uncontrolled Loading Emissions²

Pollutant	Max. lb/hr	Avg. lb/hr	TPY
VOC =	4.44	2.07	9.06
n-Hexane	0.22	0.10	0.44
Benzene	<0.01	<0.01	0.01
Toluene	0.02	0.01	0.03
Ethylbenzene	0.02	0.01	0.03
Xylenes	0.05	0.02	0.11
Total HAP =	0.30	0.14	0.62

Uncaptured Loading Emissions²

Pollutant	Max. lb/hr	Avg. lb/hr	TPY
VOC =	1.33	0.62	2.72
n-Hexane	0.06	0.03	0.13
Benzene	<0.01	<0.01	<0.01
Toluene	<0.01	<0.01	0.01
Ethylbenzene	<0.01	<0.01	0.01
Xylenes	0.02	0.01	0.03
Total HAP =	0.09	0.04	0.19

**SWN Production Company, LLC
 John Hupp Pad
 Produced Water Truck Loading Emissions - Criteria and Hazardous Air Pollutants (Continued)**

Estimated HAP Composition (% by Weight)³

Pollutant	Wt%
n-Hexane	4.865%
Benzene	0.074%
Toluene	0.353%
Ethylbenzene	0.343%
Xylenes	1.194%
Total HAP =	6.828%

Notes:

¹ Uncontrolled emissions that are captured by the collection system are routed to a vapor combustor. Per AP-42 5.2-6, 70% capture efficiency can be assumed for trucks not subject to NSPS. Uncaptured emissions shown represent those not captured by the collection system or controlled by the vapor combustor.

² Maximum lb/hr based on average hourly truck loading rate. Average lb/hr based on TPY conversion assuming continuous operation.

³ Speciated liquids analysis located in Fugitive Emissions Calculations. HAP weight % calculated as % of total hydrocarbons in the sample. All HAP assumed to volatilize from liquids for most conservative emissions estimate.

**SWN Production Company, LLC
 John Hupp Pad
 Produced Water Truck Loading Emissions - Greenhouse Gases**

Loading Information

Unit ID:	<u>EU-LOAD-PW</u>
Emission Point ID:	APC-COMB
Fill Method:	Submerged
Type of Service:	Dedicated
Mode of Operation:	Normal
TOC Em. Factor (tonne/10 ⁶ gal): ¹	0.91
Throughput (10 ⁶ gal):	30.5999
Control Type:	Vapor Return/Combustion
Vapor Capture Efficiency: ²	70.00%
Average Fill Rate (gal/hr):	7,500
Captured Vapors Routed to:	Vapor Combustor

Analysis CH ₄ wt% =	50.45623%
Analysis CO ₂ wt% =	0.26610%

Uncontrolled Loading Emissions^{3,4}

Pollutant	Max. lb/hr	Avg. lb/hr	tonnes/yr	tons/yr
CH ₄	7.59	3.54	14.05	15.49
CH ₄ as CO ₂ e	189.80	88.40	351.25	387.19
CO ₂	0.04	0.02	0.07	0.08
Total CO₂ + CO₂e =	189.84	88.42	351.32	387.27

Uncaptured Loading Emissions^{3,4}

Pollutant	Max. lb/hr	Avg. lb/hr	tonnes/yr	tons/yr
CH ₄	2.28	1.06	4.21	4.65
CH ₄ as CO ₂ e	56.94	26.52	105.37	116.16
CO ₂	0.01	0.01	0.02	0.02
Total CO₂ + CO₂e =	56.95	26.53	105.40	116.18

**SWN Production Company, LLC
 John Hupp Pad
 Produced Water Truck Loading Emissions - Greenhouse Gases (Continued)**

API Compendium Table 5-12

Loading Type	Emission Factor (tonne TOC/10⁶ gal)
Rail/Truck - Submerged Loading - Dedicated Normal Service	0.91
Rail/Truck - Submerged Loading - Vapor Balance Service	1.51
Rail/Truck - Splash Loading - Dedicated Normal Service	2.20
Rail/Truck - Splash Loading - Vapor Balance Service	1.51
Marine Loading - Ships/Ocean Barges	0.28
Marine Loading - Barges	0.45

Notes:

¹ API Compendium of Greenhouse Gas Emissions Methodologies for the Oil and Gas Industry, Table 5-12.

² Uncontrolled emissions that are captured by the collection system are routed to a vapor combustor. Per AP-42 5.2-6, 70% capture efficiency can be assumed for trucks not subject to NSPS. Uncaptured emissions shown represent those not captured by the collection system or controlled by the vapor combustor.

³ Maximum lb/hr based on average hourly truck loading rate. Average lb/hr based on TPY conversion assuming continuous operation.

⁴ CO₂e = CO₂ equivalent (Pollutant times GWP multiplier):

40 CFR 98 Table A-1, Global Warming Potential (GWP) multiplier: CO₂ = 1, CH₄ = 25

**SWN Production Company, LLC
John Hupp Pad
Vapor Combustor Emissions Calculations - Criteria and Hazardous Air Pollutants**

Criteria and Hazardous Air Pollutant Emissions

Unit ID	Pollutant	Emission Factors ¹	Total Captured Emissions ²		Combustor Destruction Efficiency	Total Controlled Emissions (Post-Capture and Combustion)	
			lb/hr	TPY		lb/hr	TPY
APC-COMB	NOx	0.138	-	-	-	4.14	18.13
	CO	0.2755	-	-	-	8.27	36.20
	PM	7.6	-	-	-	0.09	0.37
	VOC	Mass Balance	388.53	1,701.78	98.00%	7.77	34.04
	n-Hexane	Mass Balance	18.90	82.79	98.00%	0.38	1.66
	Benzene	Mass Balance	0.29	1.25	98.00%	0.01	0.03
	Toluene	Mass Balance	1.37	6.00	98.00%	0.03	0.12
	Ethylbenzene	Mass Balance	1.33	5.84	98.00%	0.03	0.12
	Xylenes	Mass Balance	4.64	20.31	98.00%	0.09	0.41

Notes:

¹ Although a vapor combustor is not considered a flare by design, the function is consistent in that it combusts a waste stream for the purpose of reducing emissions; therefore, flare emission factors for NOx and CO were used to provide the most accurate emissions estimates. Although the combustor is designed to be smokeless, PM emissions have been estimated using AP-42 Table 1.4-1 factor (lb/mmscf) for a conservative estimate.

Hours per Year: 8,760
Number of Combustors: 1

NOx and CO emission factors (lb/mmBtu): *TCEQ Air Permit Technical Guidance for Chemical Sources: Flares and Vapor Oxidizers*: High Btu waste streams (>1,000 Btu/scf) based on heat input to each combustor =

30.0 mmBtu/hr per Combustor

30.0 mmBtu/hr Total Heat Input

² Total captured emissions are based on 100% capture efficiency from storage tanks and 70% capture efficiency from truck loading with 98% destruction efficiency from the vapor combustor based on 8,760 hours of operation per year. Captured emissions from sources controlled by VOC combustor shown in following tables.

SWN Production Company, LLC

John Hupp Pad

Vapor Combustor Emissions Calculations - Criteria and Hazardous Air Pollutants (Continued)

Source	Captured VOC Emissions	
	lb/hr	TPY
Condensate Storage Tanks	366.97	1,607.35
Produced Water Storage Tanks	2.35	10.31
Condensate Truck Loading	17.76	77.78
Produced Water Truck Loading	1.45	6.34
Total VOC =	388.53	1,701.78

Source	Captured HAP Emissions (lb/hr)				
	n-Hexane	Benzene	Toluene	Ethylbenzene	Xylenes
Condensate Storage Tanks	17.85	0.27	1.29	1.26	4.38
Produced Water Storage Tanks	0.11	<0.01	0.01	0.01	0.03
Condensate Truck Loading	0.86	0.01	0.06	0.06	0.21
Produced Water Truck Loading	0.07	<0.01	0.01	<0.01	0.02
Total HAP =	18.90	0.29	1.37	1.33	4.64

Source	Captured HAP Emissions (TPY)				
	n-Hexane	Benzene	Toluene	Ethylbenzene	Xylenes
Condensate Storage Tanks	78.19	1.18	5.67	5.51	19.19
Produced Water Storage Tanks	0.50	0.01	0.04	0.04	0.12
Condensate Truck Loading	3.78	0.06	0.27	0.27	0.93
Produced Water Truck Loading	0.31	<0.01	0.02	0.02	0.08
Total HAP =	82.79	1.25	6.00	5.84	20.31

**SWN Production Company, LLC
 John Hupp Pad
 Vapor Combustor Emissions Calculations - Greenhouse Gases**

Equipment Information

Unit ID:	<u>APC-COMB</u>
Description:	Vapor Combustor
Number of Combustors:	1
Burner Design Capacity (mmBtu/hr):	30.0
Stream HHV (Btu/scf):	2,682
Annual Throughput (mmscf):	97.99
Annual Operating Hours:	8,760

Greenhouse Gas (GHG) Emissions

Pollutant	lb/hr	tonnes/yr	tons/yr
CO ₂	3,509.31	13,944.14	15,370.78
CH ₄	0.07	0.26	0.29
N ₂ O	0.01	0.03	0.03
CH ₄ as CO ₂ e	1.65	6.57	7.24
N ₂ O as CO ₂ e	1.97	7.83	8.63
Total CO₂ + CO₂e =	3,512.94	13,958.54	15,386.66

40 CFR 98 Tables C-1 and C-2 Emission Factors (kg/mmBtu)¹

Carbon Dioxide (CO ₂)	53.06
Methane (CH ₄)	1.00E-03
Nitrous Oxide (N ₂ O)	1.00E-04

Notes:

¹ CO₂e = CO₂ equivalent (Pollutant times GWP multiplier):

40 CFR 98 Table A-1, Global Warming Potential (GWP) multiplier: CO₂ = 1, CH₄ = 25, N₂O = 298

**SWN Production Company, LLC
 John Hupp Pad
 Vapor Combustor Pilot Emissions Calculations - Criteria Air Pollutants**

Criteria Air Pollutant Emissions

Unit ID	Pollutant	Emission Factors ¹	Emissions	
		(lb/mmscf)	lb/hr	TPY
EU-PILOTS APC-COMB	NO _x	100	0.02	0.07
	CO	84	0.01	0.06
	VOC	5.5	<0.01	<0.01
	SO ₂	0.6	<0.01	<0.01
	PM	7.6	<0.01	<0.01

905	Pilot Stream Heat Content (Btu/SCF)
8,760	Pilot Hours/Yr
150	Total Pilot Gas Flow Rate (SCFH) ²
135,750	Total Pilot Gas Fuel Use (Btu/hr)
1.31	Total Annual Fuel Use (MMSCF)

Notes:

¹ AP-42 Table 1.4-1, -2 (7/98)

² Vapor Combustor is equipped with three (3) pilots with a pilot fuel consumption of 50 SCFH per pilot.

**SWN Production Company, LLC
John Hupp Pad
Vapor Combustor Pilot Emissions Calculations - Hazardous Air Pollutants**

Hazardous Air Pollutant Emissions

Unit ID	Pollutant	Emission Factors ¹	Emissions	
		(lb/mmscf)	lb/hr	TPY
EU-PILOTS APC-COMB	n-Hexane	1.8	<0.01	<0.01
	Formaldehyde	0.075	<0.01	<0.01
	Benzene	0.0021	<0.01	<0.01
	Toluene	0.0034	<0.01	<0.01
Total HAP =			<0.01	<0.01

905	Pilot Stream Heat Content (Btu/SCF)
8,760	Pilot Hours/Yr
150	Total Pilot Gas Flow Rate (SCFH) ²
135,750	Total Pilot Gas Fuel Use (Btu/hr)
1.31	Total Annual Fuel Use (MMSCF)

Notes:

¹ AP-42 Table 1.4-3 (7/98)

² Vapor Combustor is equipped with three (3) pilots with a pilot fuel consumption of 50 SCFH per pilot.

**SWN Production Company, LLC
John Hupp Pad
Vapor Combustor Pilot Emissions Calculations - Greenhouse Gases**

Greenhouse Gas (GHG) Emissions

Unit ID	Pollutant	Emissions		
		lb/hr	tonnes/yr	tons/yr
EU-PILOTS APC-COMB	CO ₂	15.88	63.10	69.55
	CH ₄	<0.01	<0.01	<0.01
	N ₂ O	<0.01	<0.01	<0.01
	CH ₄ as CO ₂ e	0.01	0.03	0.03
	N ₂ O as CO ₂ e	0.01	0.04	0.04
Total CO₂ + CO₂e =		15.90	63.16	69.62

905 Pilot Stream Heat Content (Btu/SCF)
8,760 Pilot Hours/Yr
150 Total Pilot Gas Flow Rate (SCFH)²
135,750 Total Pilot Gas Fuel Use (Btu/hr)
1.31 Total Annual Fuel Use (MMSCF)

40 CFR 98 Tables C-1 and C-2 Emission Factors (kg/mmBtu)¹

Carbon Dioxide (CO ₂)	53.06
Methane (CH ₄)	1.00E-03
Nitrous Oxide (N ₂ O)	1.00E-04

Notes:

¹ CO₂e = CO₂ equivalent (Pollutant times GWP multiplier):

40 CFR 98 Table A-1, Global Warming Potential (GWP) multiplier: CO₂ = 1, CH₄ = 25, N₂O = 298

² Vapor Combustor is equipped with three (3) pilots with a pilot fuel consumption of 50 SCFH per pilot.

SWN Production Company, LLC
 John Hupp Pad
 Fugitive Emissions Calculations - Criteria and Hazardous Air Pollutants and Greenhouse Gases

Equipment Information

Source Type/Service	Number of Sources ¹	Em. Factor (lb/hr/source) ²	Control Efficiency	TOC lb/hr	TOC TPY	VOC Wt %
Valves - Gas	89	9.92E-03	0.00%	0.88	3.87	23.94%
Flanges - Gas	361	8.60E-04	0.00%	0.31	1.36	23.94%
Compressor Seals - Gas	6	1.94E-02	0.00%	0.12	0.51	23.94%
Relief Valves - Gas	30	1.94E-02	0.00%	0.58	2.55	23.94%
Total TOC (Gas Components) =				1.89	8.29	-
Valves - Light Oil	122	5.51E-03	0.00%	0.67	2.95	95.47%
Flanges - Light Oil	30	2.43E-04	0.00%	0.01	0.03	95.47%
Connectors - Light Oil	422	4.63E-04	0.00%	0.20	0.86	95.47%
Other - Light Oil	5	1.65E-02	0.00%	0.08	0.36	95.47%
Total TOC (Liquid Components) =				0.96	4.19	-

VOC and Greenhouse Gas Emissions

Source Type/Service	VOC		CH ₄		CO ₂	
	lb/hr	TPY	lb/hr	TPY	lb/hr	TPY
Valves - Gas	0.21	0.93	0.45	1.97	<0.01	0.01
Flanges - Gas	0.07	0.33	0.16	0.69	<0.01	<0.01
Compressor Seals - Gas	0.03	0.12	0.06	0.26	<0.01	<0.01
Relief Valves - Gas	0.14	0.61	0.30	1.30	<0.01	0.01
Components in Gas Service =	0.45	1.98	0.96	4.22	0.01	0.02
Valves - Light Oil	0.64	2.81	0.01	0.03	<0.01	<0.01
Flanges - Light Oil	0.01	0.03	<0.01	<0.01	<0.01	<0.01
Connectors - Light Oil	0.19	0.82	<0.01	0.01	<0.01	<0.01
Other - Light Oil	0.08	0.35	<0.01	<0.01	<0.01	<0.01
Components in Liquid Service =	0.91	4.00	0.01	0.05	<0.01	<0.01
Total (Gas + Liquid Components) =	1.37	5.99	0.97	4.27	0.01	0.02

SWN Production Company, LLC
 John Hupp Pad
 Fugitive Emissions Calculations (Continued)

Hazardous Air Pollutant (HAP) Emissions (lb/hr)

Source Type/Service	n-Hexane	Benzene	Toluene	Ethylbenzene	Xylenes	2,2,4-Tri.	Total
Valves - Gas	<0.01	<0.01	<0.01	0.00	<0.01	0.00	<0.01
Flanges - Gas	<0.01	<0.01	<0.01	0.00	<0.01	0.00	<0.01
Compressor Seals - Gas	<0.01	<0.01	<0.01	0.00	<0.01	0.00	<0.01
Relief Valves - Gas	<0.01	<0.01	<0.01	0.00	<0.01	0.00	<0.01
Components in Gas Service =	0.01	<0.01	<0.01	0.00	<0.01	0.00	0.01
Valves - Light Oil	0.03	<0.01	<0.01	<0.01	0.01	0.00	0.05
Flanges - Light Oil	<0.01	<0.01	<0.01	<0.01	<0.01	0.00	<0.01
Connectors - Light Oil	0.01	<0.01	<0.01	<0.01	<0.01	0.00	0.01
Other - Light Oil	<0.01	<0.01	<0.01	<0.01	<0.01	0.00	0.01
Components in Liquid Service =	0.05	<0.01	<0.01	<0.01	0.01	0.00	0.07
Total (Gas + Liquid Components) =	0.05	<0.01	<0.01	<0.01	0.01	0.00	0.07

Hazardous Air Pollutant (HAP) Emissions (TPY)

Source Type/Service	n-Hexane	Benzene	Toluene	Ethylbenzene	Xylenes	2,2,4-Tri.	Total
Valves - Gas	0.01	<0.01	<0.01	0.00	<0.01	0.00	0.01
Flanges - Gas	<0.01	<0.01	<0.01	0.00	<0.01	0.00	<0.01
Compressor Seals - Gas	<0.01	<0.01	<0.01	0.00	<0.01	0.00	<0.01
Relief Valves - Gas	0.01	<0.01	<0.01	0.00	<0.01	0.00	0.01
Components in Gas Service =	0.03	<0.01	<0.01	0.00	<0.01	0.00	0.03
Valves - Light Oil	0.14	<0.01	0.01	0.01	0.04	0.00	0.20
Flanges - Light Oil	<0.01	<0.01	<0.01	<0.01	<0.01	0.00	<0.01
Connectors - Light Oil	0.04	<0.01	<0.01	<0.01	0.01	0.00	0.06
Other - Light Oil	0.02	<0.01	<0.01	<0.01	<0.01	0.00	0.02
Components in Liquid Service =	0.20	<0.01	0.01	0.01	0.05	0.00	0.29
Total (Gas + Liquid Components) =	0.23	<0.01	0.02	0.01	0.05	0.00	0.31

SWN Production Company, LLC
 John Hupp Pad
 Fugitive Emissions Calculations (Continued)

Typical Component Count per Equipment Type based on Representative Facility³

Source Type/Service	WH	GPU	HT	LPT	FGC	OT	TT-O	SP
Valves - Gas	12	3	2	5	5	0	0	0
Flanges - Gas	37	15	9	24	33	3	2	0
Compressor Seals - Gas	0	0	0	0	3	0	0	0
Relief Valves - Gas	1	3	1	1	1	1	1	0
Open-Ended Lines - Gas	0	0	0	0	0	0	0	0
Valves - Light Oil	0	5	6	12	3	6	9	8
Flanges - Light Oil	0	0	0	0	0	0	0	6
Connectors - Light Oil	0	20	24	48	12	24	30	20
Pump Seals - Light Oil	0	0	0	0	0	0	0	0
Other - Light Oil	0	0	0	0	0	0	0	1

Equipment Type	WH	GPU	HT	LPT	FGC	OT	TT-O	SP
Number of Each Type On Pad =	5	5	2	0	2	5	1	5

SWN Production Company, LLC
 John Hupp Pad
 Fugitive Emissions Calculations (Continued)

Speciated Gas Analysis⁴

Component	Molecular Weight	Mole %	Equiv. Wt. Basis	Weight %	HC Weight %	lb/hr	TPY
Hydrogen Sulfide	34.082	0.000%	0.000	0.000%	-	0.00	0.00
Carbon Dioxide	44.010	0.135%	0.059	0.266%	-	0.01	0.02
Nitrogen	28.013	0.562%	0.157	0.705%	-	0.01	0.06
Methane	16.042	70.227%	11.266	50.456%	50.951%	0.96	4.22
Ethane	30.069	18.466%	5.553	24.868%	25.112%	0.48	2.08
Propane	44.096	7.401%	3.264	14.616%	14.760%	0.28	1.22
i-Butane	58.122	0.627%	0.364	1.632%	1.648%	0.03	0.14
n-Butane	58.122	1.752%	1.018	4.561%	4.605%	0.09	0.38
i-Pentane	72.149	0.237%	0.171	0.766%	0.773%	0.01	0.06
n-Pentane	72.149	0.340%	0.245	1.099%	1.109%	0.02	0.09
n-Hexane	86.175	0.083%	0.072	0.320%	0.323%	0.01	0.03
Other Hexanes	86.175	0.100%	0.086	0.386%	0.390%	0.01	0.03
Heptanes (as n-Heptane)	100.202	0.052%	0.052	0.233%	0.236%	<0.01	0.02
Benzene	78.114	0.001%	0.001	0.003%	0.004%	<0.01	<0.01
Toluene	92.141	0.001%	0.001	0.004%	0.004%	<0.01	<0.01
Ethylbenzene	106.167	0.000%	0.000	0.000%	0.000%	0.00	0.00
Xylenes	106.167	0.001%	0.001	0.005%	0.005%	<0.01	<0.01
2,2,4-Trimethylpentane	114.230	0.000%	0.000	0.000%	0.000%	0.00	0.00
Octanes (as n-Octane)	114.229	0.012%	0.014	0.061%	0.062%	<0.01	0.01
Nonanes (as n-Nonane)	128.255	0.003%	0.004	0.017%	0.017%	<0.01	<0.01
Decanes (as n-Decane)	142.282	0.000%	0.000	0.000%	0.000%	0.00	0.00
TOTAL =		100.00%	22.33	100.00%	100.00%	1.91	8.37
		TOTAL HC =	22.11	TOTAL VOC =	23.94%	0.45	1.98
				TOTAL HAP =	0.34%	0.01	0.03

SWN Production Company, LLC
 John Hupp Pad
 Fugitive Emissions Calculations (Continued)

Speciated Liquids Analysis⁴

Component	Molecular Weight	Mole %	Equiv. Wt. Basis	Weight %	HC Weight %	lb/hr	TPY
Hydrogen Sulfide	34.082	0.000%	0.000	0.000%	-	0.00	0.00
Carbon Dioxide	44.010	0.018%	0.008	0.010%	-	<0.01	<0.01
Nitrogen	28.013	0.039%	0.011	0.013%	-	<0.01	<0.01
Methane	16.042	5.534%	0.888	1.086%	1.086%	0.01	0.05
Ethane	30.069	9.358%	2.814	3.442%	3.443%	0.03	0.14
Propane	44.096	13.053%	5.756	7.041%	7.042%	0.07	0.30
i-Butane	58.122	2.573%	1.495	1.829%	1.830%	0.02	0.08
n-Butane	58.122	10.652%	6.191	7.573%	7.575%	0.07	0.32
i-Pentane	72.149	3.545%	2.558	3.129%	3.129%	0.03	0.13
n-Pentane	72.149	6.903%	4.980	6.092%	6.093%	0.06	0.26
n-Hexane	86.175	4.614%	3.976	4.864%	4.865%	0.05	0.20
Other Hexanes	86.175	4.877%	4.203	5.141%	5.142%	0.05	0.22
Heptanes (as n-Heptane)	100.202	8.161%	8.177	10.003%	10.005%	0.10	0.42
Benzene	78.114	0.077%	0.060	0.074%	0.074%	<0.01	<0.01
Toluene	92.141	0.313%	0.288	0.353%	0.353%	<0.01	0.01
Ethylbenzene	106.167	0.264%	0.280	0.343%	0.343%	<0.01	0.01
Xylenes	106.167	0.919%	0.976	1.193%	1.194%	0.01	0.05
2,2,4-Trimethylpentane	114.230	0.000%	0.000	0.000%	0.000%	0.00	0.00
Octanes (as n-Octane)	114.229	6.250%	7.139	8.733%	8.735%	0.08	0.37
Nonanes (as n-Nonane)	128.255	3.978%	5.102	6.241%	6.242%	0.06	0.26
Decanes (as n-Decane)	142.282	18.871%	26.850	32.843%	32.850%	0.31	1.38
TOTAL =		100.00%	81.75	100.00%	100.00%	0.96	4.20
		TOTAL HC =	81.73	TOTAL VOC =	95.47%	0.91	4.00
				TOTAL HAP =	6.83%	0.07	0.29

Notes:

¹ Component counts taken by equipment type at representative facility and made site-specific according to the number of each equipment type at this site.

² Emission Factor Source: EPA-453/R-95-017. TOC multiplied by pollutant content of streams (weight %) to obtain pollutant emissions.

³ Equipment Type Key: WH = Well Head, GPU = Gas Production Unit, HT = Heater, LPT = Low-Pressure Tower, FGC = Flash Gas Compressor, OT = Oil Tank, TT-O = Tank Truck - Oil SP = Separator

⁴ Gas and liquids analyses located in Attachment L.

**SWN Production Company, LLC
John Hupp Pad
Fugitive Haul Road Emissions**

Facility Data¹

Vehicle Type	Light Vehicles (Pick-ups and Cars)	Medium Trucks (Service Trucks)	Heavy Trucks (Tanker Trucks) ²
Average vehicle weight ((empty + full)/2) (tons)	2	15	23.5
Number of wheels per vehicle type (w)	4	10	18
Average number of round trips/day/vehicle type	10	5	19
Distance per round trip (miles/trip)	0.41	0.41	0.41
Vehicle miles travelled (miles/day)	3.86	1.93	7.73
Number of days operational (days/yr)	365	365	365
Vehicle miles travelled VMT (miles/yr)	1,410	705	2,821
Average vehicle speed S (mph)	10	10	10
Average number of round trips/hour/vehicle type	0.53	0.26	1.06
Average number of round trips/year/vehicle type	3,480	1,740	6,959
Estimated maximum number of round trips/hour/vehicle type	3	3	2
Estimated maximum number of round trips/day/vehicle type	6	4	21
Estimated maximum number of round trips/year/vehicle type	2,300	1,533	8,074

190 Average Tanker Volume (bbl)
7,980 Gallons Tanker Volume
1,996 bwpd
1,627 bopd
19.07 Tanker Trucks per Day
620 Length Leased Access Road (ft)
450 Longest Pad Side (ft)
2,140 Total Round Trip Feet

Formula & Calculation Inputs

$$E = k(s/12)^a * (W/3)^b * ((365-P) / 365)$$

where:

Days per year

Annual average hours per day of road operations

k = PM Particle Size Multiplier

k = PM10 Particle Size Multiplier

k = PM2.5 Particle Size Multiplier

s = Surface Material Silt Content

P = Number of days > 0.01 inch of rain

a = PM Constant

a = PM10 & PM2.5 Constant

b = PM, PM10, & PM2.5 Constant

Total hourly fleet vehicle miles travelled (miles/hr)

Total annual fleet vehicle miles travelled (miles/yr)³

Average wheels⁴

Average vehicle weight of the fleet (W)⁵

Moisture Ratio

Control Efficiency (CF)

Reference : AP-42, Section 13.2.2 (11/06), Equation 1a and 2

Rate	Units	Comment
365		
18		
4.90	lb/VMT	AP-42 Section 13.2.2 (11/06), Table 13.2.2-2 (PM)
1.50	lb/VMT	AP-42 Section 13.2.2 (11/06), Table 13.2.2-2 (PM ₁₀)
0.15	lb/VMT	AP-42 Section 13.2.2 (11/06), Table 13.2.2-2 (PM _{2.5})
3.9	%	State Default Data from AP-42 Data (1999 NEI Data)
150	days/year	AP-42 Section 13.2.2 (11/06), Figure 13.2.2-1
0.70	unitless	AP-42 Section 13.2.2 (11/06), Table 13.2.2-2 (PM)
0.90	unitless	AP-42 Section 13.2.2 (11/06), Table 13.2.2-2 (PM ₁₀ & PM _{2.5})
0.45	unitless	AP-42 Section 13.2.2 (11/06), Table 13.2.2-2
0.75	VMT/hr	
4,936.03	VMT/yr	
13		
16.1	tons	
1.00		Estimated based on 0.2% uncontrolled surface water content assuming no watering
0.00	%	Based on Moisture Ratio and Figure 13.2.2-2 Control

EPA - BID Document 13.2.2 - 1998

SWN Production Company, LLC
 John Hupp Pad
 Fugitive Haul Road Emissions (Continued)

Vehicle Type	Emission Factors			Control Efficiency (%)	Total Vehicle Miles Travelled		Emission Rates			Emission Rates		
	PM (lbs/VMT)	PM ₁₀ (lbs/VMT)	PM _{2.5} (lbs/VMT)		(VMT/hr)	(VMT/yr)	Total PM (lb/hr)	Total PM ₁₀ (lb/hr)	PM _{2.5} (lb/hr)	Total PM (tons/yr)	Total PM ₁₀ (tons/yr)	PM _{2.5} (tons/yr)
	Light Vehicles	2.80	0.69		0.07	0.00	0.21	1,410.29	0.60	0.15	0.01	1.98
Medium Trucks	2.80	0.69	0.07	0.00	0.11	705.15	0.30	0.07	0.01	0.99	0.24	0.02
Heavy Trucks	2.80	0.69	0.07	0.00	0.43	2,820.59	1.20	0.29	0.03	3.95	0.97	0.10
Total =				0.00	0.75	4,936.03	2.11	0.51	0.05	6.92	1.69	0.17

Notes:

- 1) Facility vehicle data based on estimates, GP5.1 and AP-42 13.2.2-2 defaults for industrial unpaved roads
- 2) Tank trucker average vehicle weight as $(W_{(empty)} + W_{(full)})/2 = (7 + 40)/2 = 23.7$ tons
- 3) Average vehicle miles travelled (VMT/yr) as (No. of round trip/vehicle * No. of vehicles/type * Roundtrip miles/trip) * 365 days/yr * No. of vehicle type
- 4) Average wheels calculated as average of (No. of wheels per vehicle type * No. of vehicle/type)
- 5) Average vehicle fleet calculated as (Average weight of vehicle type * Percentage of each vehicle type on unpaved surface). Percentage of each vehicle type = $VMT_{vehicle\ type} / VMT$
- 6) Minimum one-per-day average pick-up trucks and service trucks even if tanker not required every day.
- 7) Per EPA BID calculations, all emissions based on average trips. Estimated maximum hourly, daily and yearly trips provided for information only.

Calculation of Emission Factors (AP-42, 13.2.2)

Equation 1a: $EF = k(s/12)^a (W/3)^b$ where *k*, *a*, and *b* are empirical constants and
EF = size-specific emission factor (lb/VMT)
s = surface material silt content %
W = mean vehicle weight (tons)

Equation 2: $EF_{ext} = EF * ((365 - P) / 365)$ where:
EF_{ext} = annual size-specific emission factor extrapolated for natural mitigation, lb/VMT
EF = emission factor from Equation 1a
P = number of days in a year with at least 0.01 inches of precipitation

Calculation of Emissions

$E = EF_{ext} * VMT/yr * ((1 - CF) / 100) * 1\ ton/2000\ lbs$ where:
E = annual emissions (tons/yr)
EF_{ext} = annual size-specific emission factor extrapolated for natural mitigation, lb/VMT
CF = control efficiency (%)

ATTACHMENT U: FACILITY-WIDE EMISSION SUMMARY SHEETS

ATTACHMENT U – FACILITY-WIDE CONTROLLED EMISSIONS SUMMARY SHEET

List all sources of emissions in this table. Use extra pages if necessary.

Emission Point ID #	NO _x		CO		VOC		SO ₂		PM ₁₀		PM _{2.5}		CH ₄		GHG (CO ₂ e)	
	lb/hr	tpy	lb/hr	tpy	lb/hr	tpy	lb/hr	tpy	lb/hr	tpy	lb/hr	tpy	lb/hr	tpy	lb/hr	tpy
EP-ENG1	0.32	1.40	0.64	2.80	0.31	1.36	<0.01	<0.01	0.02	0.11	0.02	0.11	<0.01	0.01	155.19	679.73
EP-ENG2	0.32	1.40	0.64	2.80	0.31	1.36	<0.01	<0.01	0.02	0.11	0.02	0.11	<0.01	0.01	155.19	679.73
EP-GPU1	0.11	0.48	0.09	0.41	0.01	0.03	<0.01	<0.01	0.01	0.04	0.01	0.04	<0.01	0.01	117.10	512.89
EP-GPU2	0.11	0.48	0.09	0.41	0.01	0.03	<0.01	<0.01	0.01	0.04	0.01	0.04	<0.01	0.01	117.10	512.89
EP-GPU3	0.11	0.48	0.09	0.41	0.01	0.03	<0.01	<0.01	0.01	0.04	0.01	0.04	<0.01	0.01	117.10	512.89
EP-GPU4	0.11	0.48	0.09	0.41	0.01	0.03	<0.01	<0.01	0.01	0.04	0.01	0.04	<0.01	0.01	117.10	512.89
EP-GPU5	0.11	0.48	0.09	0.41	0.01	0.03	<0.01	<0.01	0.01	0.04	0.01	0.04	<0.01	0.01	117.10	512.89
EP-SH1	0.17	0.73	0.14	0.61	0.01	0.04	<0.01	<0.01	0.01	0.06	0.01	0.06	<0.01	0.01	175.65	769.33
EP-SH2	0.17	0.73	0.14	0.61	0.01	0.04	<0.01	<0.01	0.01	0.06	0.01	0.06	<0.01	0.01	175.65	769.33
EP-LOAD-COND	-	-	-	-	7.61	33.33	-	-	-	-	-	-	0.86	3.79	21.61	94.67
EP-LOAD-PW	-	-	-	-	0.62	2.72	-	-	-	-	-	-	1.06	4.65	26.53	116.18
APC-COMB	4.16	18.20	8.28	36.26	7.77	34.04	<0.01	<0.01	0.09	0.38	0.09	0.38	0.07	0.29	3,528.83	15,456.28
TOTAL	5.68	24.87	10.30	45.11	16.67	73.02	0.01	0.03	0.20	0.88	0.20	0.88	2.01	8.82	4,824.13	21,129.69

Annual emissions shall be based on 8,760 hours per year of operation for all emission units except emergency generators.

According to 45CSR14 Section 2.43.e, fugitive emissions are not included in the major source determination because it is not listed as one of the source categories in Table 1. Therefore, fugitive emissions shall not be included in the PTE above.

Note that the emissions from the APC-COMB includes uncombusted emissions from the uncombusted emissions from the tanks and loading operations, as well as combustor pilot emissions.

ATTACHMENT U – FACILITY-WIDE HAP CONTROLLED EMISSIONS SUMMARY SHEET

List all sources of emissions in this table. Use extra pages if necessary.

Emission Point ID #	Formaldehyde		Benzene		Toluene		Ethylbenzene		Xylenes		Hexane		Total HAPs	
	lb/hr	tpy	lb/hr	tpy	lb/hr	tpy	lb/hr	tpy	lb/hr	tpy	lb/hr	tpy	lb/hr	tpy
EP-ENG1	0.09	0.38	<0.01	0.01	<0.01	<0.01	<0.01	<0.01	<0.01	<0.01	-	-	0.10	0.44
EP-ENG2	0.09	0.38	<0.01	0.01	<0.01	<0.01	<0.01	<0.01	<0.01	<0.01	-	-	0.10	0.44
EP-GPU1	<0.01	<0.01	<0.01	<0.01	<0.01	<0.01	-	-	-	-	<0.01	0.01	<0.01	0.01
EP-GPU2	<0.01	<0.01	<0.01	<0.01	<0.01	<0.01	-	-	-	-	<0.01	0.01	<0.01	0.01
EP-GPU3	<0.01	<0.01	<0.01	<0.01	<0.01	<0.01	-	-	-	-	<0.01	0.01	<0.01	0.01
EP-GPU4	<0.01	<0.01	<0.01	<0.01	<0.01	<0.01	-	-	-	-	<0.01	0.01	<0.01	0.01
EP-GPU5	<0.01	<0.01	<0.01	<0.01	<0.01	<0.01	-	-	-	-	<0.01	0.01	<0.01	0.01
EP-SH1	<0.01	<0.01	<0.01	<0.01	<0.01	<0.01	-	-	-	-	<0.01	0.01	<0.01	0.01
EP-SH2	<0.01	<0.01	<0.01	<0.01	<0.01	<0.01	-	-	-	-	<0.01	0.01	<0.01	0.01
EP-LOAD-COND	-	-	0.01	0.02	0.03	0.12	0.03	0.11	0.09	0.40	0.37	1.62	0.52	2.28
EP-LOAD-PW	-	-	<0.01	<0.01	<0.01	0.01	<0.01	0.01	0.01	0.03	0.03	0.13	0.04	0.19
APC-COMB	<0.01	<0.01	0.01	0.05	0.06	0.25	0.05	0.24	0.19	0.84	0.78	3.41	1.09	4.79
TOTAL	0.17	0.76	0.02	0.07	0.06	0.25	0.05	0.24	0.19	0.84	0.79	3.48	1.31	5.73

Annual emissions shall be based on 8,760 hours per year of operation for all emission units except emergency generators.

According to 45CSR14 Section 2.43.e, fugitive emissions are not included in the major source determination because it is not listed as one of the source categories in Table 1. Therefore, fugitive emissions shall not be included in the PTE above.

Note that the emissions from the APC-COMB includes uncombusted emissions from the uncombusted emissions from the tanks and loading operations, as well as combustor pilot emissions.

ATTACHMENT V: LEGAL ADVERTISEMENT

Note: Affidavit of Publication will be submitted upon receipt by SWN from the publisher.

AIR QUALITY PERMIT NOTICE Notice of Application

Notice is given that SWN Production Company, LLC has applied to the West Virginia Department of Environmental Protection, Division of Air Quality, for a G70-D General Permit Registration for a natural gas production facility (John Hupp Pad) located in Brooke County, West Virginia. From I-70 turn right on US Rt. 40 east and travel 4.4 miles to the Rt. 40 staging area. From Rt. 40 staging turn left on US Rt. 40 east and travel 3.3 miles to intersection of US 40 east and CR-45, (Atkinson Crossing), and turn left on CR-45. Travel 1.1 mile on CR-45 to intersection of CR-45 and CR-47, (Potomac Ridge Rd), and turn left on CR-45. Travel 0.8 miles on CR-45 to intersection of CR-45 and CR-37, (GC&P Rd), and stay straight through on CR-37. Travel 1.8 miles to intersection of CR-37 and CR-7/3, (Harvey Rd), and turn right on CR-7/3. Travel CR-7/3 for 0.3 miles to intersection of CR-7/3 and CR-55, (again Harvey Rd), and turn right on CR-55. Travel CR-55 for 1.9 miles to intersection of CR-55 and SR-88 and turn right on SR-88 North. Travel SR-88 0.8 miles to intersection of SR-88 and CR- 11/1 and turn right on CR- 11/1. Travel CR 11/1 for 0.6 miles to access road on right. Latitude and longitude coordinates are 40.177627, -80.570409.

The applicant estimates the potential to discharge the following Regulated Air Pollutants will be:

Nitrogen Oxides (NO _x)	24.87 tons/yr
Carbon Monoxide (CO)	45.11 tons/yr
Volatile Organic Compounds (VOC)	79.01 tons/yr
Sulfur Dioxide (SO ₂)	0.03 tons/yr
Particulate Matter (PM)	7.80 tons/yr
Acetaldehyde	0.03 tons/yr
Acrolein	0.03 tons/yr
Benzene	0.07 tons/yr
Ethylbenzene	0.25 tons/yr
Formaldehyde	0.76 tons/yr
Methanol	0.03 tons/yr
n-Hexane	3.71 tons/yr
Toluene	0.27 tons/yr
Xylenes	0.89 tons/yr
Carbon Dioxide	20,897.41 tons/yr
Methane	13.09 tons/yr
Nitrous Oxide	0.04 tons/yr
CO ₂ Equivalent	21,236.40 tons/yr

Operations is planned to begin on or about August 1, 2017. Written comments will be received by the West Virginia Department of Environmental Protection, Division of Air Quality, 601 57th Street, SE, Charleston, WV 25304, for at least 30 calendar days from the date of publication of this notice. Any

SWN Production Company, LLC
John Hupp Pad
June 2017

questions regarding this permit application should be directed to the DAQ at (304) 926-0499, extension 1250, during normal business hours.

Dated this the XXth of June 2017

By: SWN Production Company, LLC
Carla Suszkowski, P.E.
Regulatory Manager – West Virginia Division
10000 Energy Drive
Spring, TX 77389