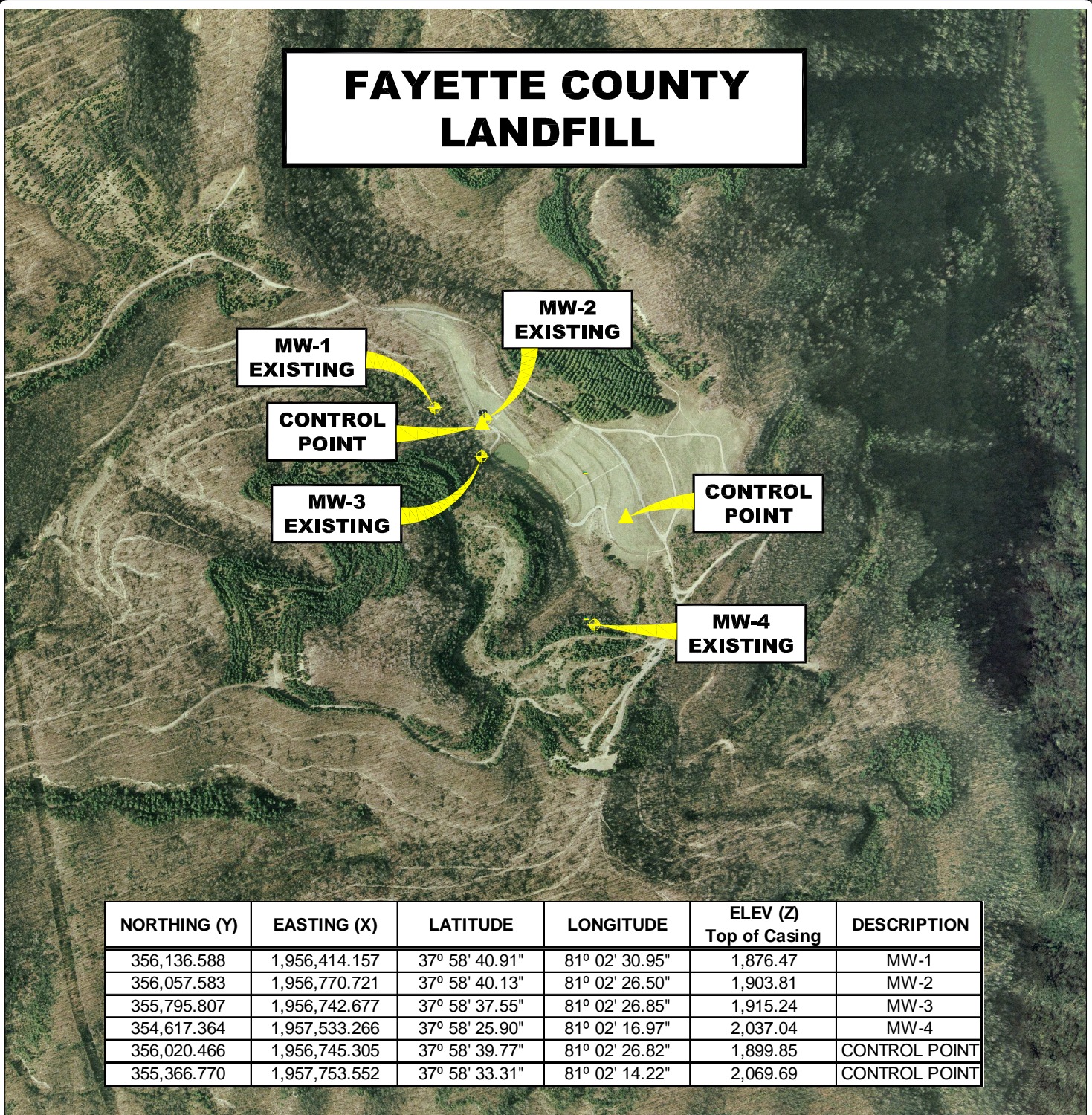


FAYETTE COUNTY LANDFILL



NORTHING (Y)	EASTING (X)	LATITUDE	LONGITUDE	ELEV (Z) Top of Casing	DESCRIPTION
356,136.588	1,956,414.157	37° 58' 40.91"	81° 02' 30.95"	1,876.47	MW-1
356,057.583	1,956,770.721	37° 58' 40.13"	81° 02' 26.50"	1,903.81	MW-2
355,795.807	1,956,742.677	37° 58' 37.55"	81° 02' 26.85"	1,915.24	MW-3
354,617.364	1,957,533.266	37° 58' 25.90"	81° 02' 16.97"	2,037.04	MW-4
356,020.466	1,956,745.305	37° 58' 39.77"	81° 02' 26.82"	1,899.85	CONTROL POINT
355,366.770	1,957,753.552	37° 58' 33.31"	81° 02' 14.22"	2,069.69	CONTROL POINT

AERIAL MAP MONITORING WELL LOCATIONS FAYETTE COUNTY, WEST VIRGINIA

0' 1,000' 2,000' 3,000'



SCALE: 1 INCH = 1,000 FEET



Stantec Consulting Services Inc.

1 Moore Avenue
Buckhannon WV 26201
Tel. 304.472.7140
Fax. 304.472.6239
www.stantec.com

PROJECT NO. 173611045

SURVEYED BY: WAG

DRAWN BY: JHL

CHECKED BY: DEM

APPROVED BY: JHL

DATE: MARCH 11, 2010

NOTE:

HORIZONTAL DATUM :
WEST VIRGINIA STATE PLANE GRID COORDINATES
NAD 83 SOUTH ZONE (CORS 96).

VERTICAL DATUM : NAVD 88 GEOID 09 (CONUS)

COORDINATE UNITS : US SURVEY FOOT
DISTANCE UNITS : US SURVEY FOOT
HEIGHT UNITS : US SURVEY FOOT

SHT. NO.
2
TOTAL
2