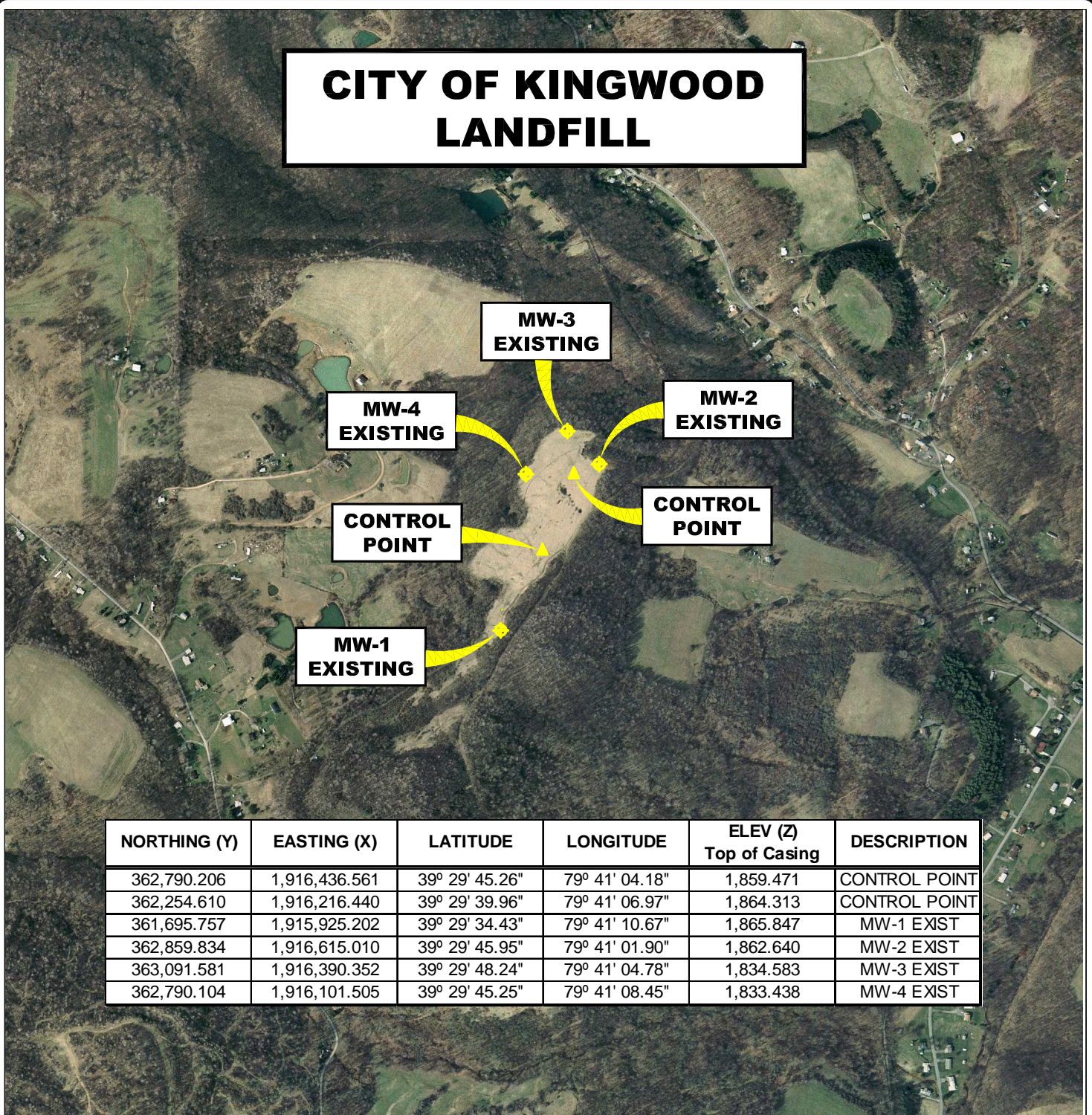


CITY OF KINGWOOD LANDFILL



NORTHING (Y)	EASTING (X)	LATITUDE	LONGITUDE	ELEV (Z) Top of Casing	DESCRIPTION
362,790.206	1,916,436.561	39° 29' 45.26"	79° 41' 04.18"	1,859.471	CONTROL POINT
362,254.610	1,916,216.440	39° 29' 39.96"	79° 41' 06.97"	1,864.313	CONTROL POINT
361,695.757	1,915,925.202	39° 29' 34.43"	79° 41' 10.67"	1,865.847	MW-1 EXIST
362,859.834	1,916,615.010	39° 29' 45.95"	79° 41' 01.90"	1,862.640	MW-2 EXIST
363,091.581	1,916,390.352	39° 29' 48.24"	79° 41' 04.78"	1,834.583	MW-3 EXIST
362,790.104	1,916,101.505	39° 29' 45.25"	79° 41' 08.45"	1,833.438	MW-4 EXIST

AERIAL MAP MONITORING WELL LOCATIONS

KINGWOOD, PRESTON COUNTY, WEST VIRGINIA

0' 1,000' 2,000' 3,000'



SCALE: 1 INCH = 1,000 FEET



Stantec Consulting Services Inc.

1 Moore Avenue
Buckhannon WV 26201
Tel. 304.472.7140
Fax. 304.472.6239
www.stantec.com

PROJECT NO. 173611045
SURVEYED BY: WAG
DRAWN BY: JHL
CHECKED BY: DEM
APPROVED BY: JHL
DATE: OCTOBER 26, 2009

NOTE:
HORIZONTAL DATUM :
WEST VIRGINIA STATE PLANE COORDINATES
NAD 83 NORTH ZONE (CORS 96).

VERTICAL DATUM : NAVD 88 GEOID 03 (CONUS)

COORDINATE UNITS : US SURVEY FOOT
DISTANCE UNITS : US SURVEY FOOT
HEIGHT UNITS : US SURVEY FOOT

SHT. NO.
2
TOTAL
2