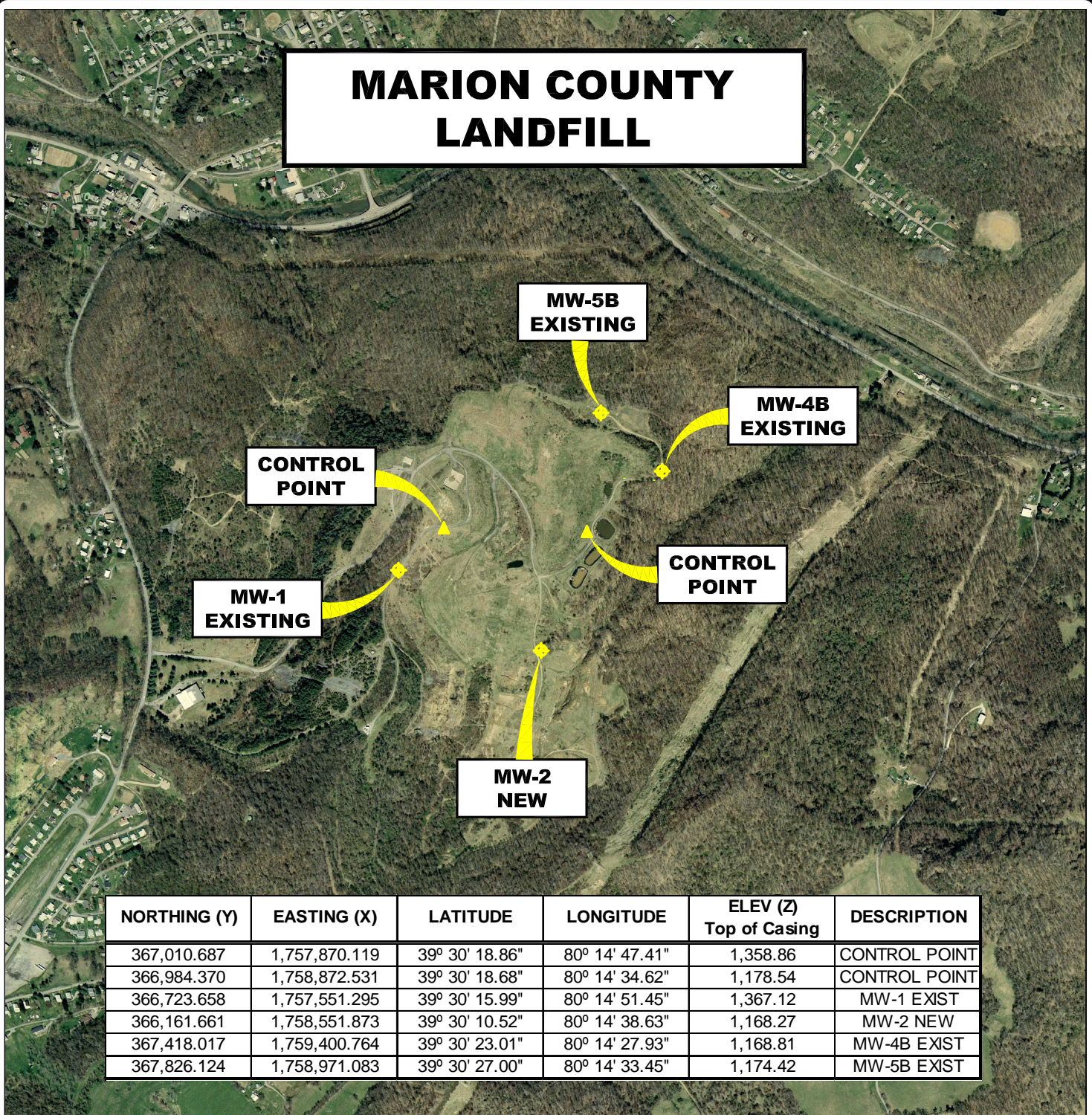


# MARION COUNTY LANDFILL



NORTHING (Y)	EASTING (X)	LATITUDE	LONGITUDE	ELEV (Z) Top of Casing	DESCRIPTION
367,010.687	1,757,870.119	39° 30' 18.86"	80° 14' 47.41"	1,358.86	CONTROL POINT
366,984.370	1,758,872.531	39° 30' 18.68"	80° 14' 34.62"	1,178.54	CONTROL POINT
366,723.658	1,757,551.295	39° 30' 15.99"	80° 14' 51.45"	1,367.12	MW-1 EXIST
366,161.661	1,758,551.873	39° 30' 10.52"	80° 14' 38.63"	1,168.27	MW-2 NEW
367,418.017	1,759,400.764	39° 30' 23.01"	80° 14' 27.93"	1,168.81	MW-4B EXIST
367,826.124	1,758,971.083	39° 30' 27.00"	80° 14' 33.45"	1,174.42	MW-5B EXIST

## AERIAL MAP MONITORING WELL LOCATIONS

FARMINGTON, MARION COUNTY, WEST VIRGINIA

0' 1,000' 2,000' 3,000'



SCALE: 1 INCH = 1,000 FEET



**Stantec Consulting Services Inc.**

1 Moore Avenue  
Buckhannon WV 26201  
Tel. 304.472.7140  
Fax. 304.472.6239  
www.stantec.com

PROJECT NO.	173611045
SURVEYED BY:	WAG
DRAWN BY:	JHL
CHECKED BY:	DEM
APPROVED BY:	JHL
DATE:	OCTOBER 26, 2009

NOTE:  
HORIZONTAL DATUM :  
WEST VIRGINIA STATE PLANE COORDINATES  
NAD 83 NORTH ZONE (CORS 96).  
  
VERTICAL DATUM : NAVD 88 GEOID 03 (CONUS)  
  
COORDINATE UNITS : US SURVEY FOOT  
DISTANCE UNITS : US SURVEY FOOT  
HEIGHT UNITS : US SURVEY FOOT

SHT. NO.	2
TOTAL	2