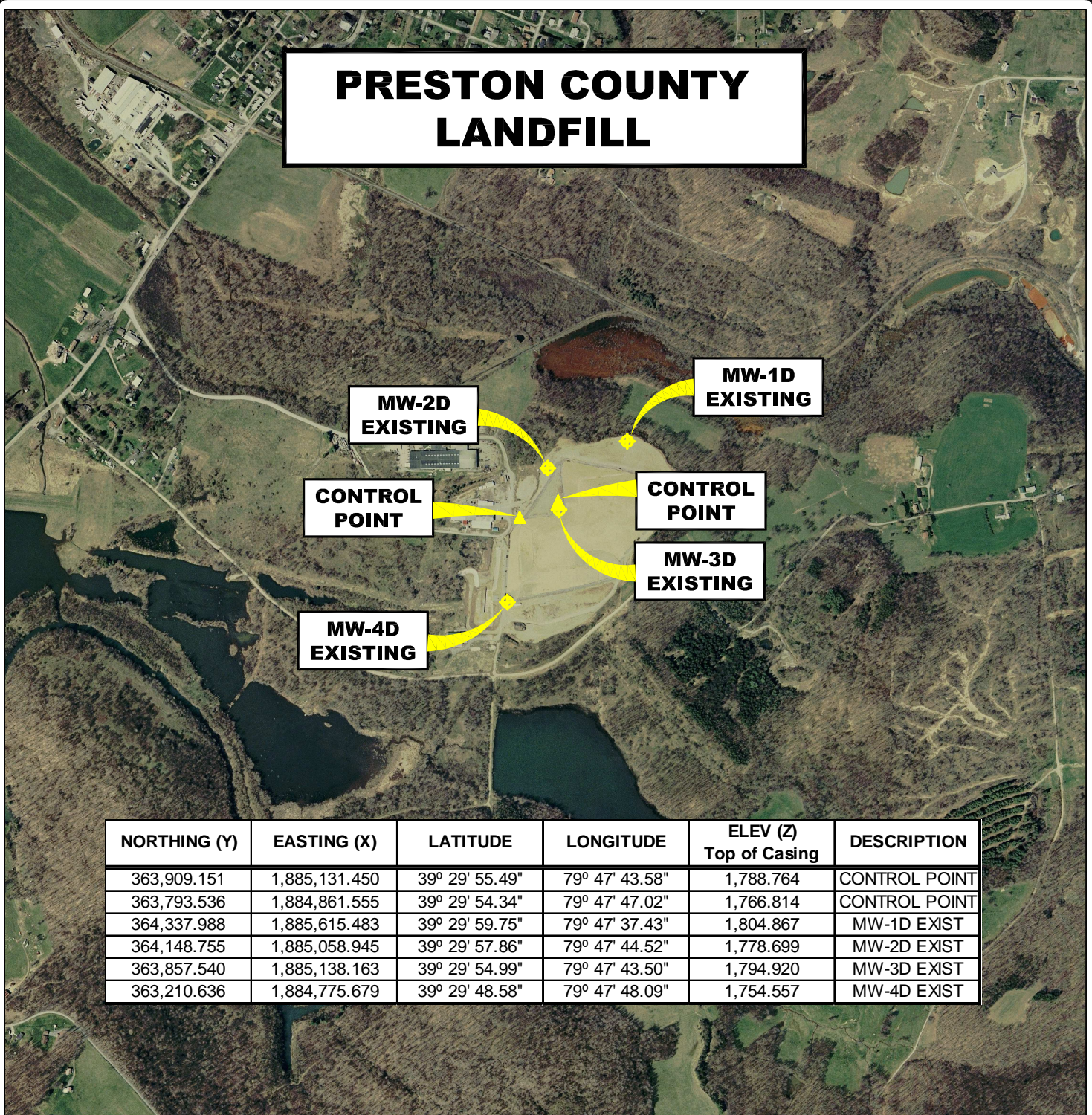


PRESTON COUNTY LANDFILL



NORTHING (Y)	EASTING (X)	LATITUDE	LONGITUDE	ELEV (Z) Top of Casing	DESCRIPTION
363,909.151	1,885,131.450	39° 29' 55.49"	79° 47' 43.58"	1,788.764	CONTROL POINT
363,793.536	1,884,861.555	39° 29' 54.34"	79° 47' 47.02"	1,766.814	CONTROL POINT
364,337.988	1,885,615.483	39° 29' 59.75"	79° 47' 37.43"	1,804.867	MW-1D EXIST
364,148.755	1,885,058.945	39° 29' 57.86"	79° 47' 44.52"	1,778.699	MW-2D EXIST
363,857.540	1,885,138.163	39° 29' 54.99"	79° 47' 43.50"	1,794.920	MW-3D EXIST
363,210.636	1,884,775.679	39° 29' 48.58"	79° 47' 48.09"	1,754.557	MW-4D EXIST

AERIAL MAP MONITORING WELL LOCATIONS

REEDSVILLE, PRESTON COUNTY, WEST VIRGINIA

0' 1,000' 2,000' 3,000'



SCALE: 1 INCH = 1,000 FEET



Stantec Consulting Services Inc.

1 Moore Avenue
Buckhannon WV 26201
Tel. 304.472.7140
Fax. 304.472.6239
www.stantec.com

PROJECT NO.	173611045
SURVEYED BY:	WAG
DRAWN BY:	JHL
CHECKED BY:	DEM
APPROVED BY:	JHL
DATE:	october 26, 2009

NOTE:
HORIZONTAL DATUM :
WEST VIRGINIA STATE PLANE COORDINATES
NAD 83 NORTH ZONE (CORS 96).

VERTICAL DATUM : NAVD 88 GEOID 03 (CONUS)

COORDINATE UNITS : US SURVEY FOOT
DISTANCE UNITS : US SURVEY FOOT
HEIGHT UNITS : US SURVEY FOOT

SHT. NO.	2
TOTAL	2